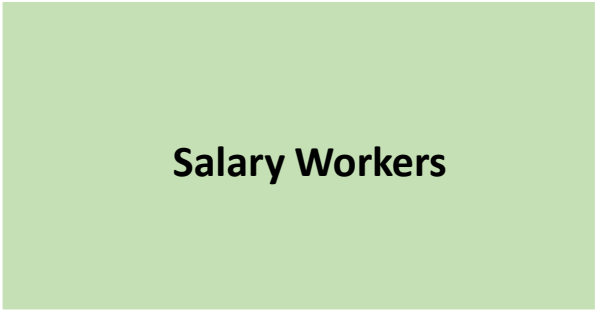


# DWR Organizational Chart

# Color Key



**Appointed Workers**



**Salary Workers**



**Wage Workers**



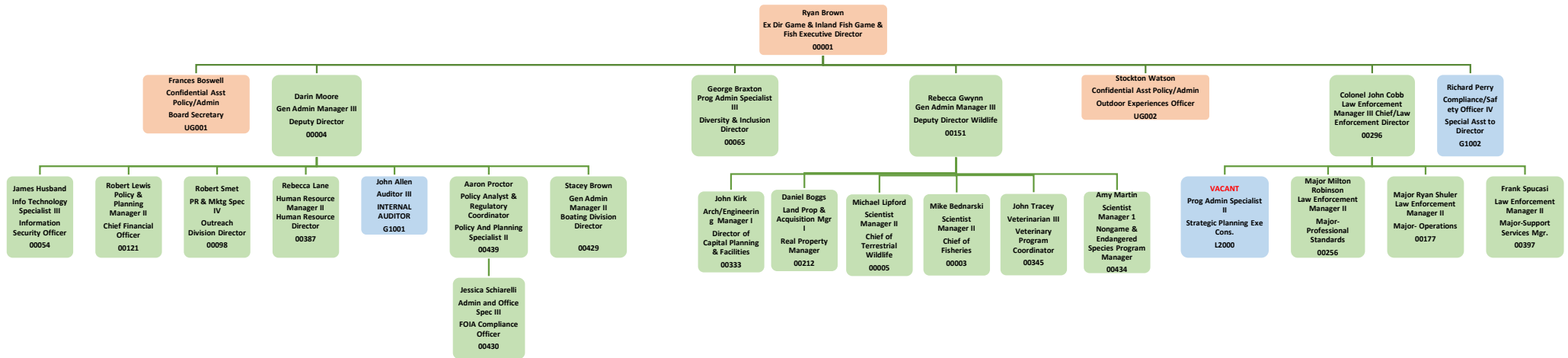
**Restricted Workers**

## Organizational Charts

- [Executive Office & Direct Reports](#)
- [Human Resource](#)
- [Planning & Finance HQ](#)
  - [Procurement & Facilities](#)
  - [Accounting](#)
  - [IT Development](#)
  - [Warehouse / IT Operations](#)
- [Legislature & Policy Division](#)
- [Law Enforcement HQ](#)
  - [Office of Professional Standards](#)
  - [Operations Region I](#)
  - [Operations Region II](#)
  - [Operations Region III](#)
  - [Operations Region IV](#)
  - [Operations Special Ops](#)
- [Outreach Division HQ](#)
  - [Client Services](#)
  - [Recreation & Education](#)
- [Executive Office, Wildlife, Aquatics Divisions](#)
- [Wildlife Division HQ](#)
  - [Region I & IV Programs](#)
  - [Region II & III Programs](#)
  - [Lands & Access Region I](#)
  - [Lands & Access Region II](#)
  - [Lands & Access Region III](#)
  - [Lands & Access Region IV](#)
  - [Habitat Program](#)
  - [Endangered Species](#)
- [Fisheries Division HQ](#)
  - [Aquatics Regional Divisions](#)
    - [Aquatics Region I](#)
    - [Aquatics Region II](#)
    - [Aquatics Region III](#)
    - [Aquatics Region IV](#)
  - [Hatchery Units](#)
    - [King & Queen Hatchery](#)
    - [Montebello Hatchery](#)
    - [Vic Thomas Hatchery](#)
    - [Buller Hatchery](#)
    - [Marion Hatchery](#)
    - [Paint Bank Hatchery](#)
    - [Wytheville Hatchery](#)
    - [Front Royal Hatchery](#)
    - [Coursey Springs Hatchery](#)
  - [Environmental Services Section \(ESS\) / Fish and Wildlife Information Section \(FWIS\)](#)
  - [Capital Programs Unit](#)

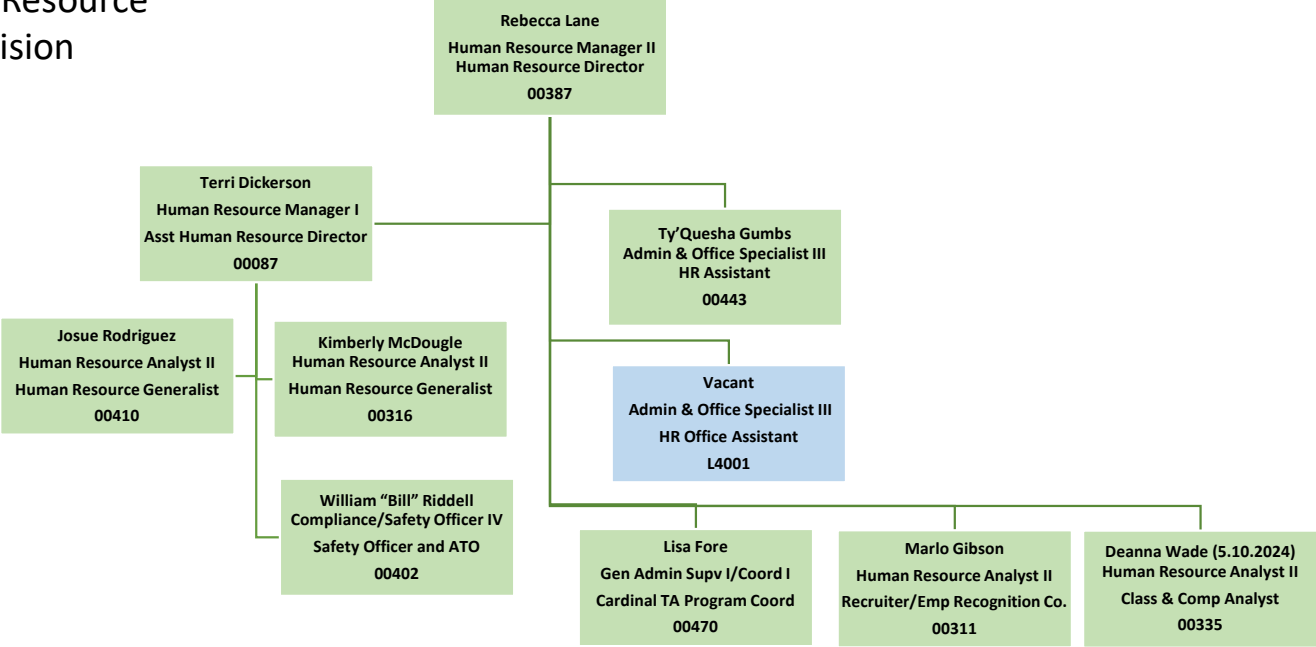
# Executive Office & Direct Reports

# DWR Executive Office & Direct Reports



# Human Resource Division

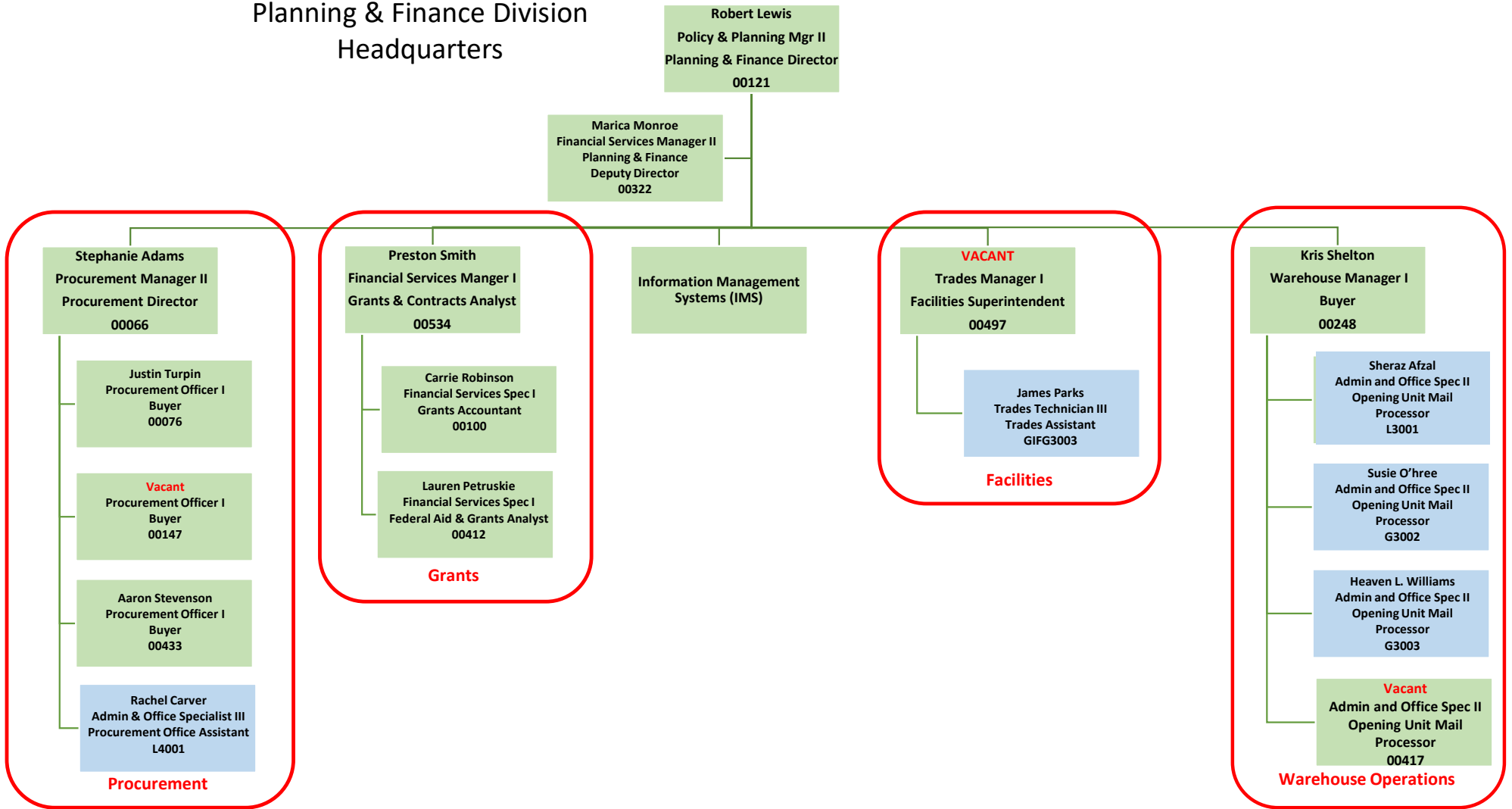
# Human Resource Division



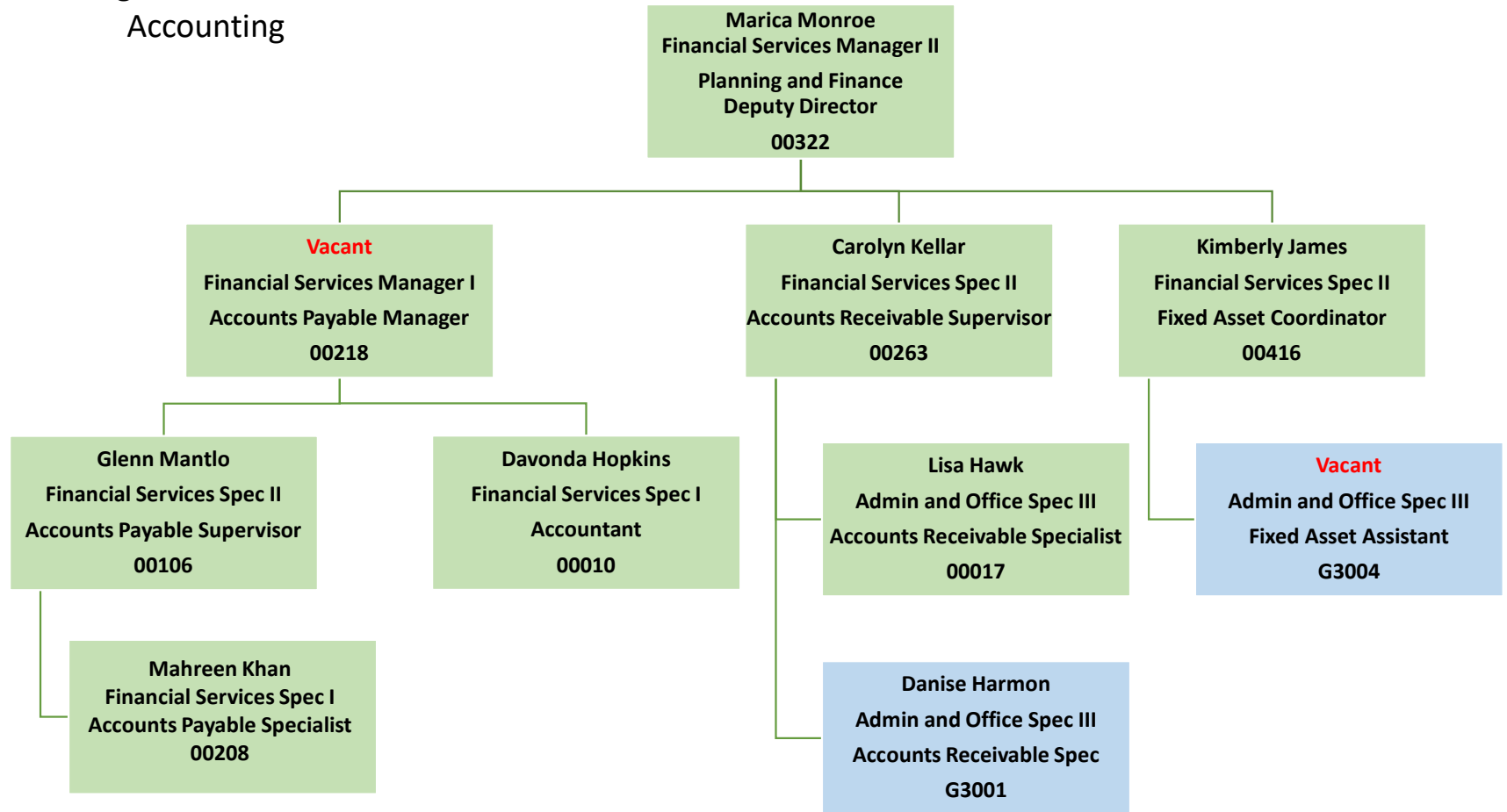
# Planning & Finance Division



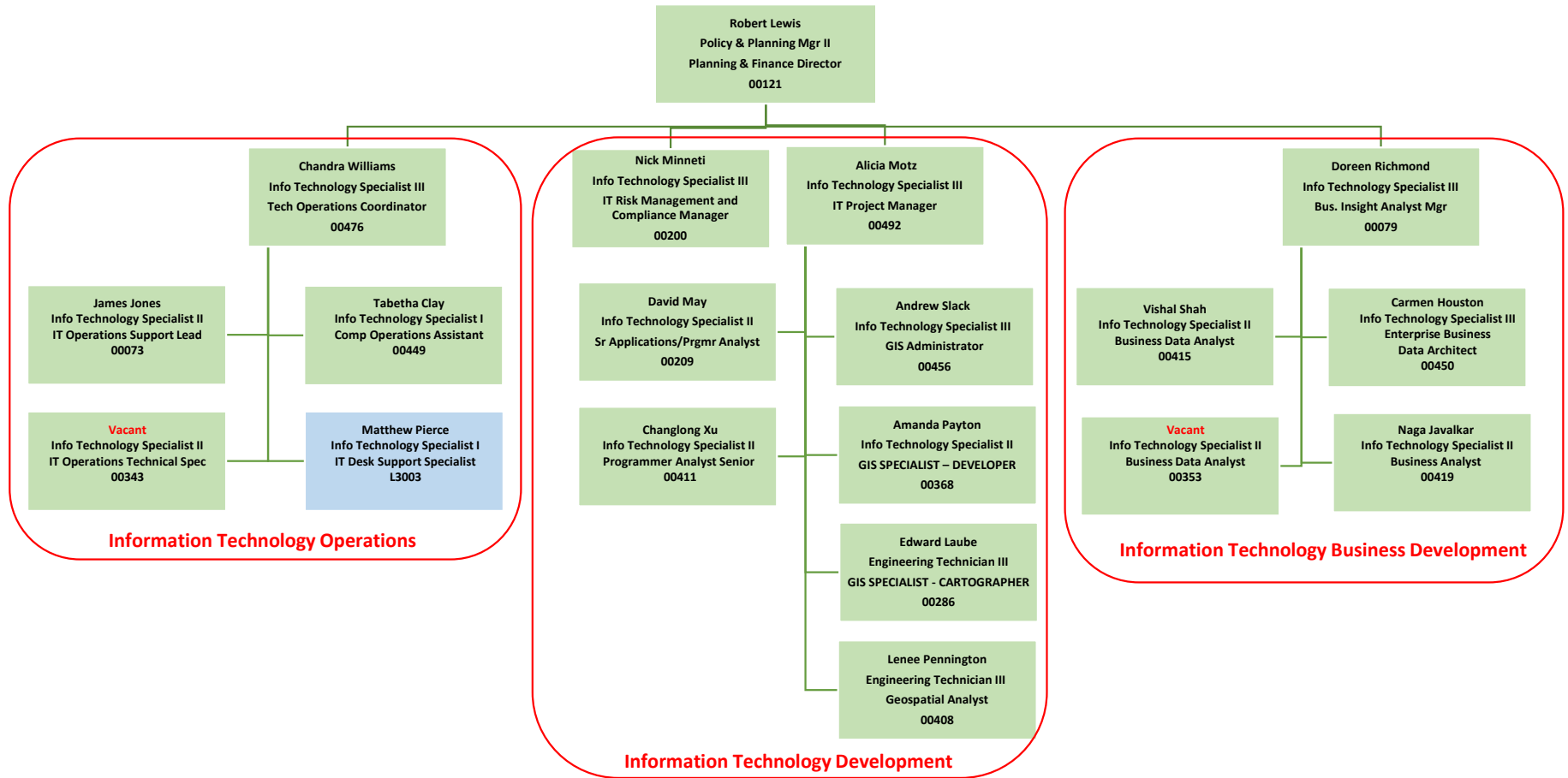
# Planning & Finance Division Headquarters



Planning & Finance Division  
Accounting

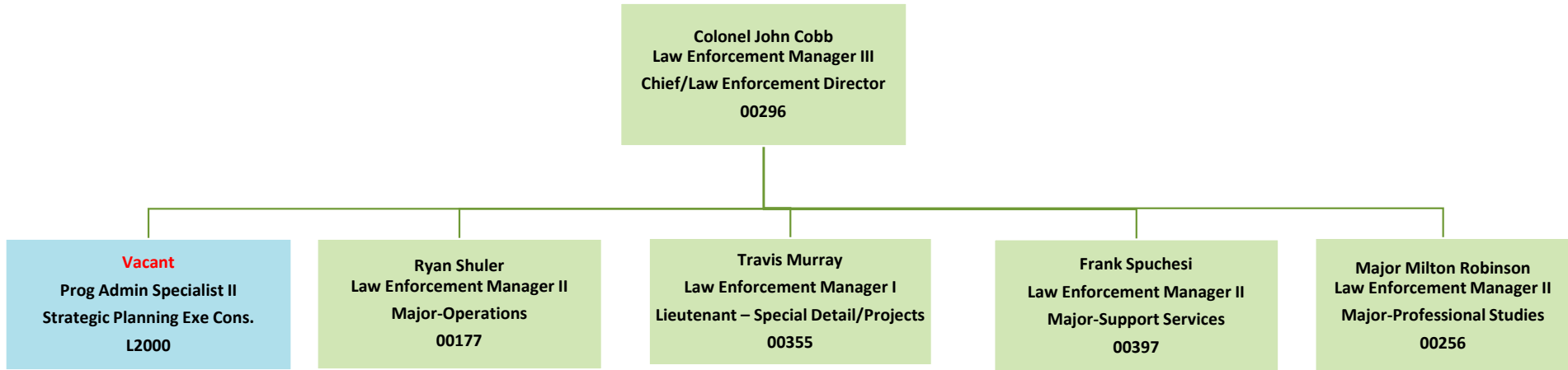


# Planning & Finance Division IMS

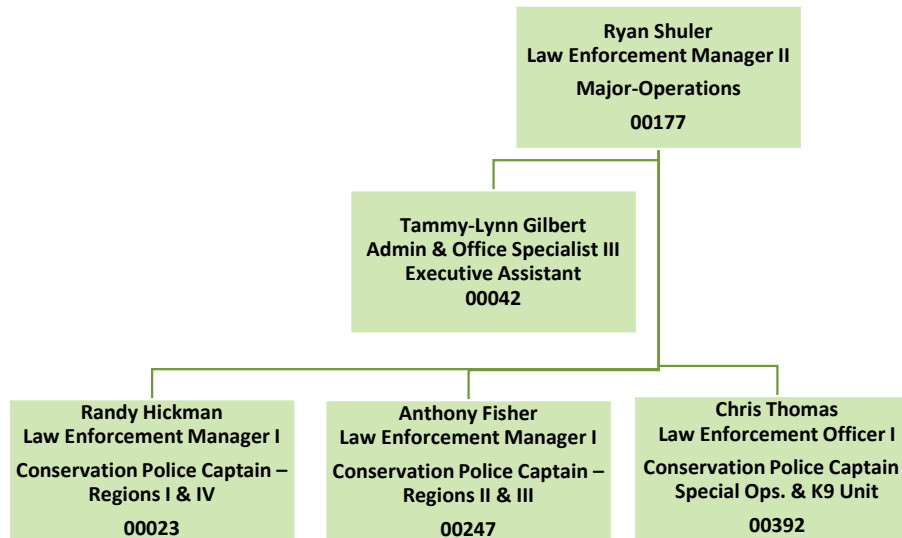


# Law Enforcement Division

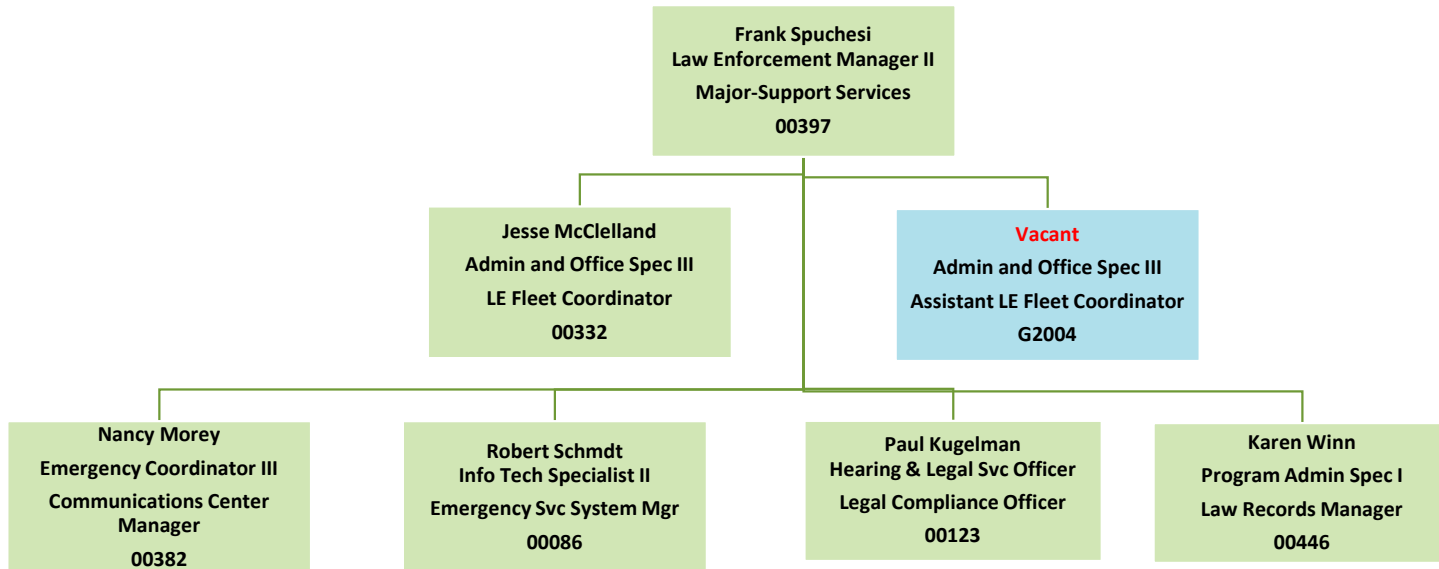
# Law Enforcement Administration



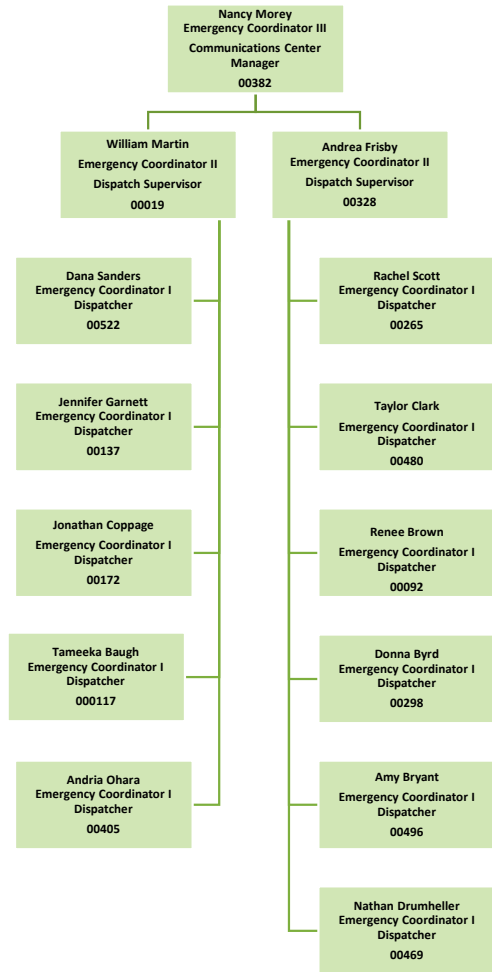
## Law Enforcement Operations



# Law Enforcement Support Services

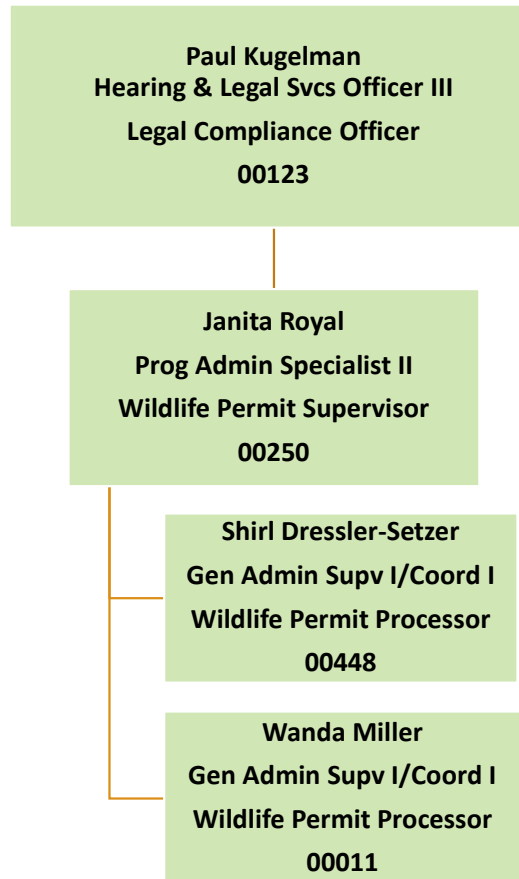


# Law Enforcement Support Services – Communication Center

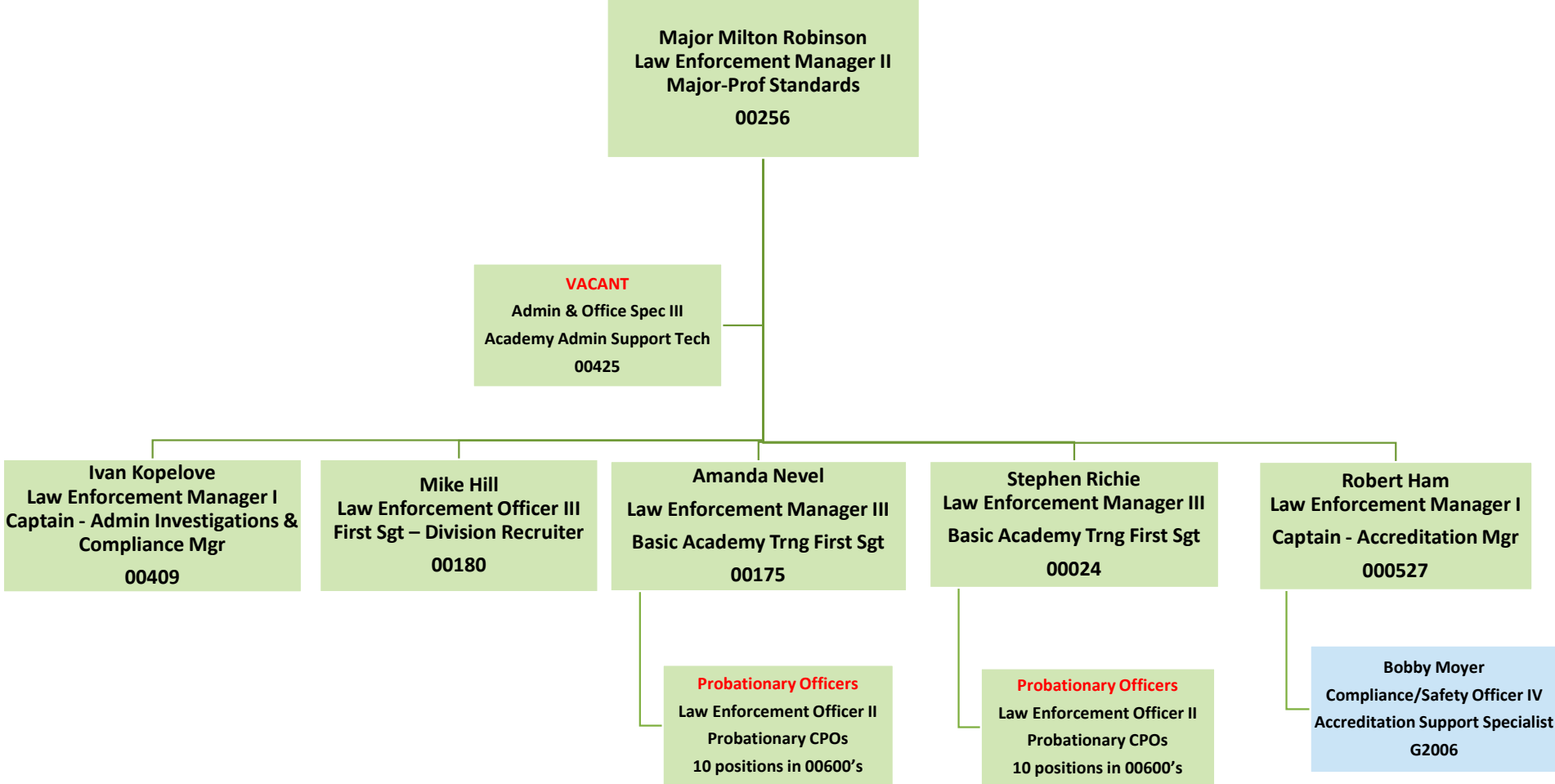




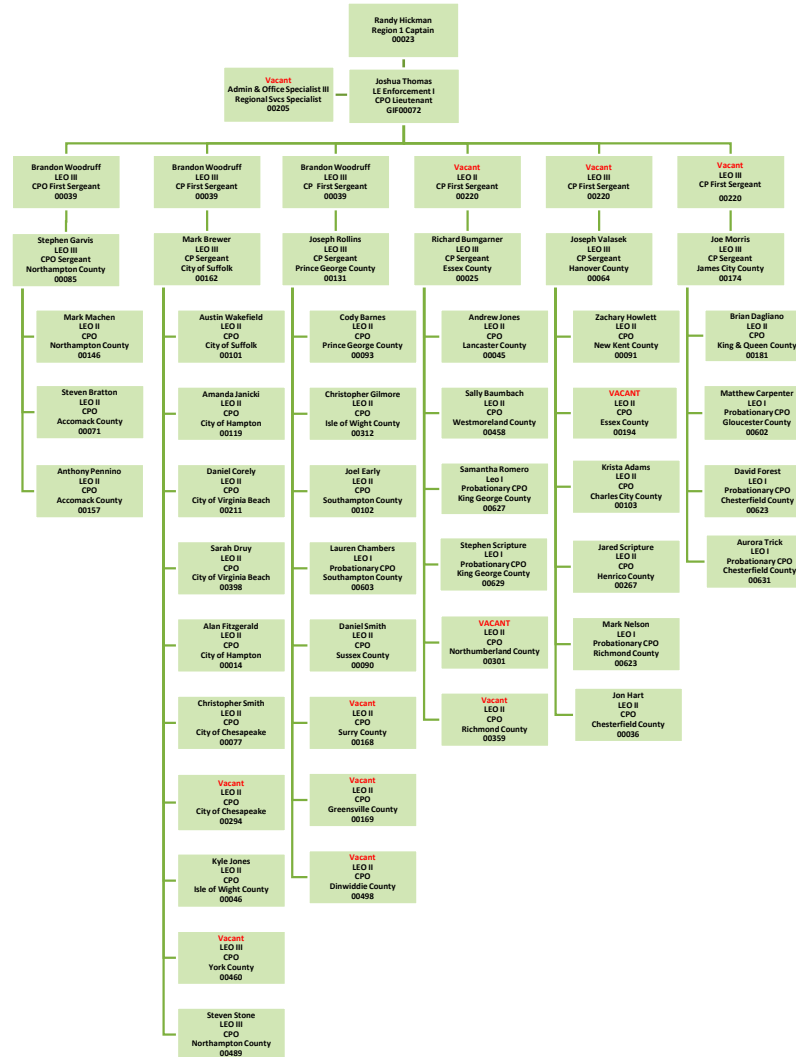
Law Enforcement Support Services -  
Legislature & Policy Division



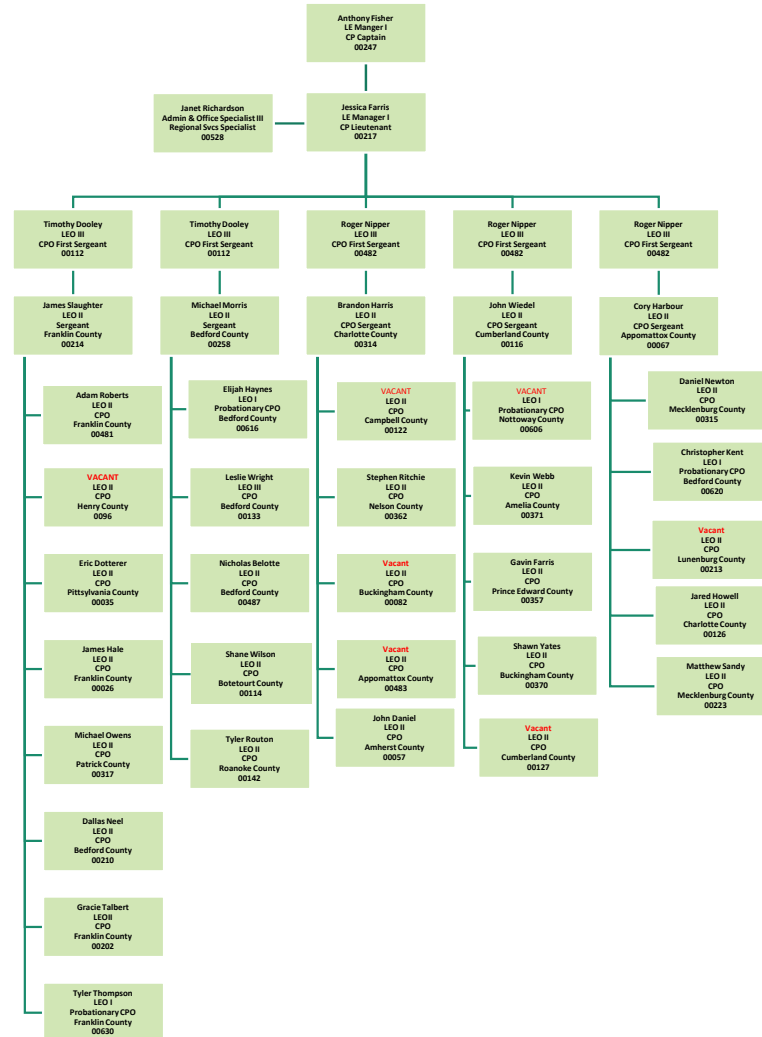
Law Enforcement Professional Standards



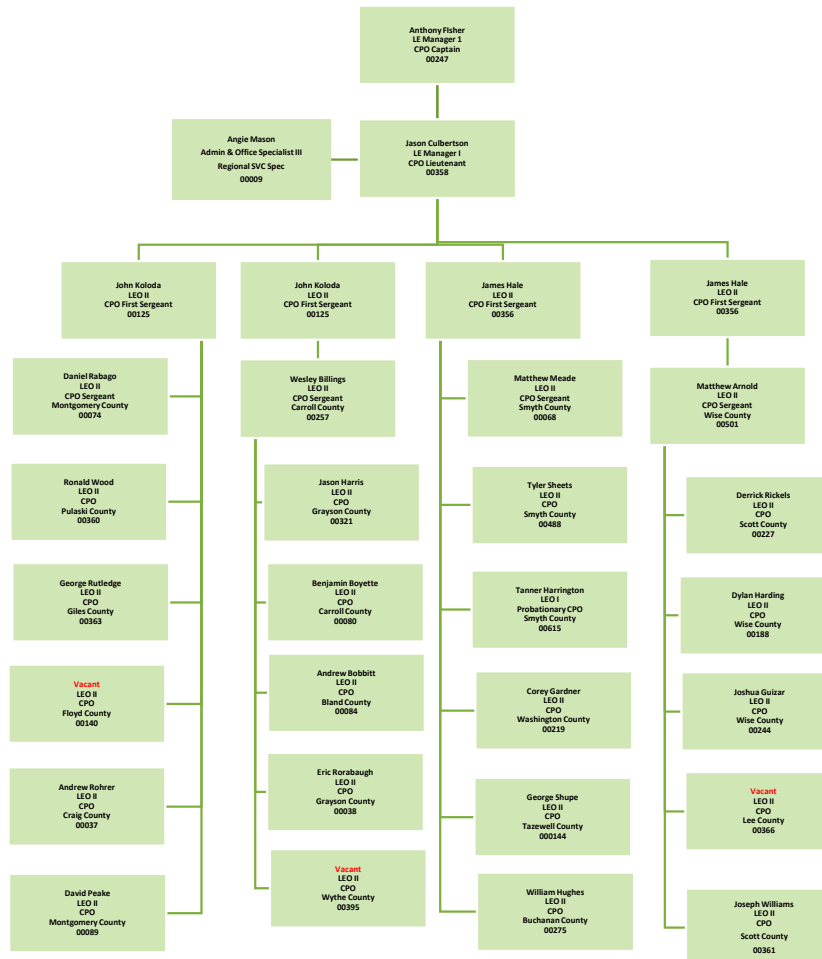
# Law Enforcement Division Operations Region I



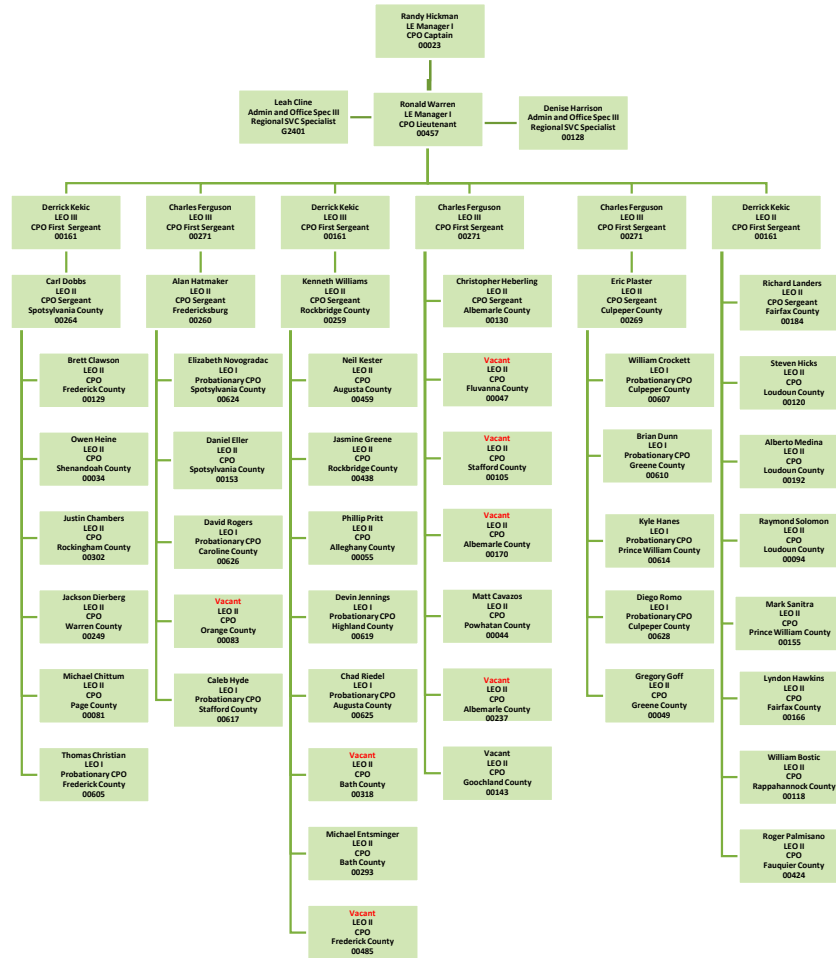
# Law Enforcement Division Operations Region II



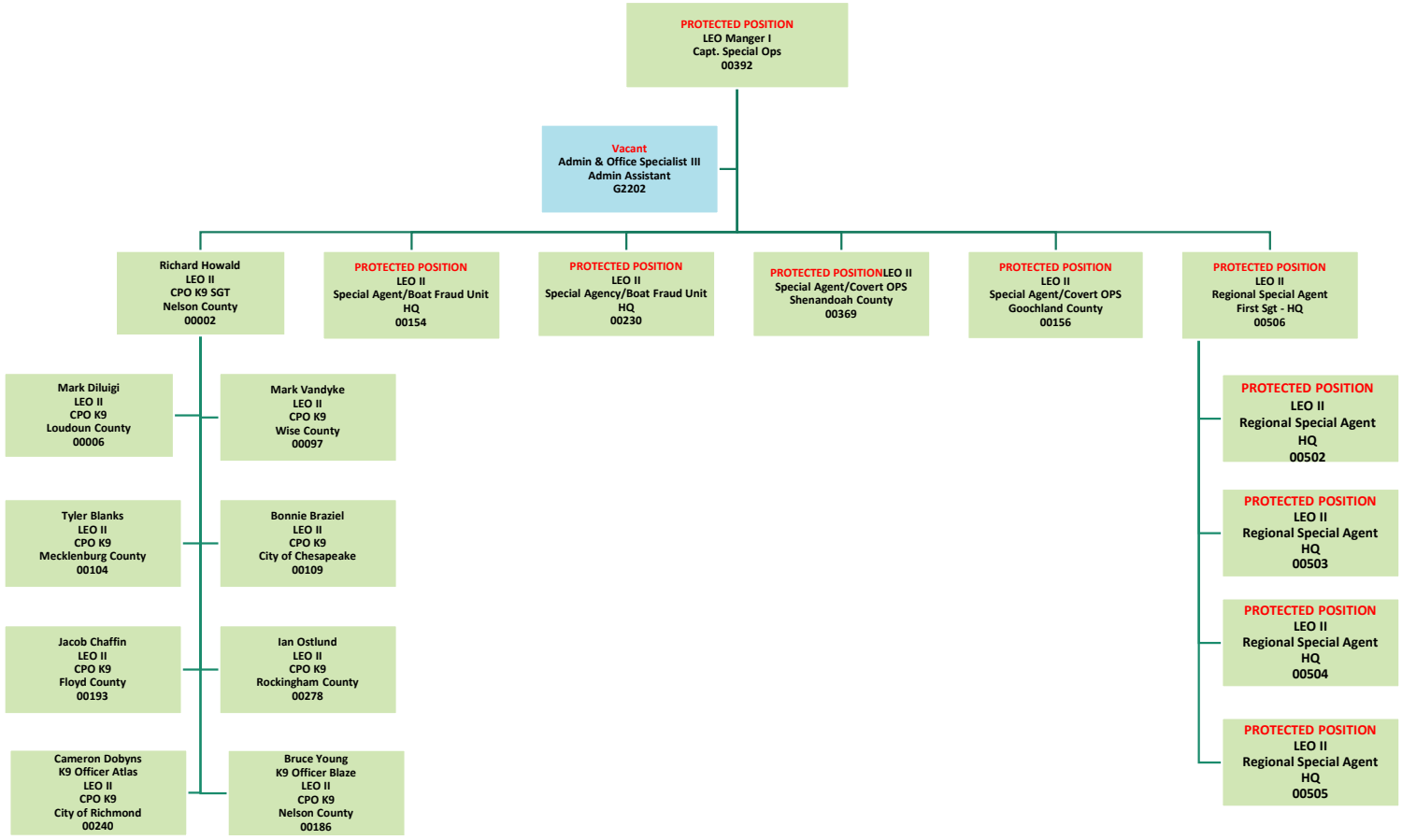
# Law Enforcement Division Operations Region III



# Law Enforcement Division Operations Region IV



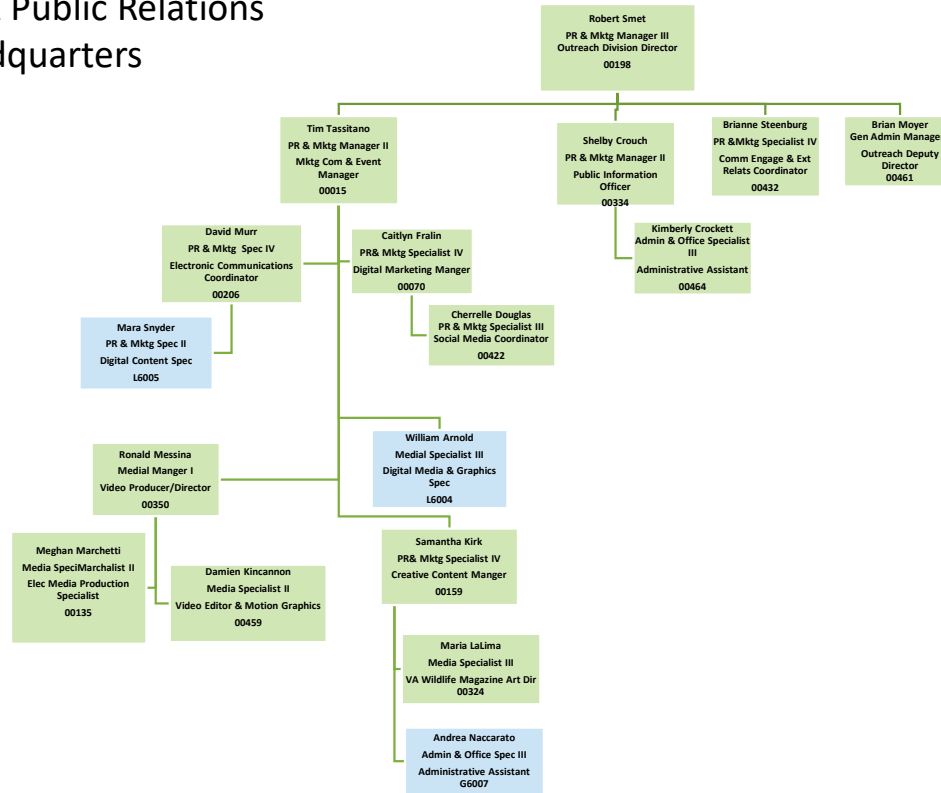
# Law Enforcement - Operations Special Operations & K9 Unit



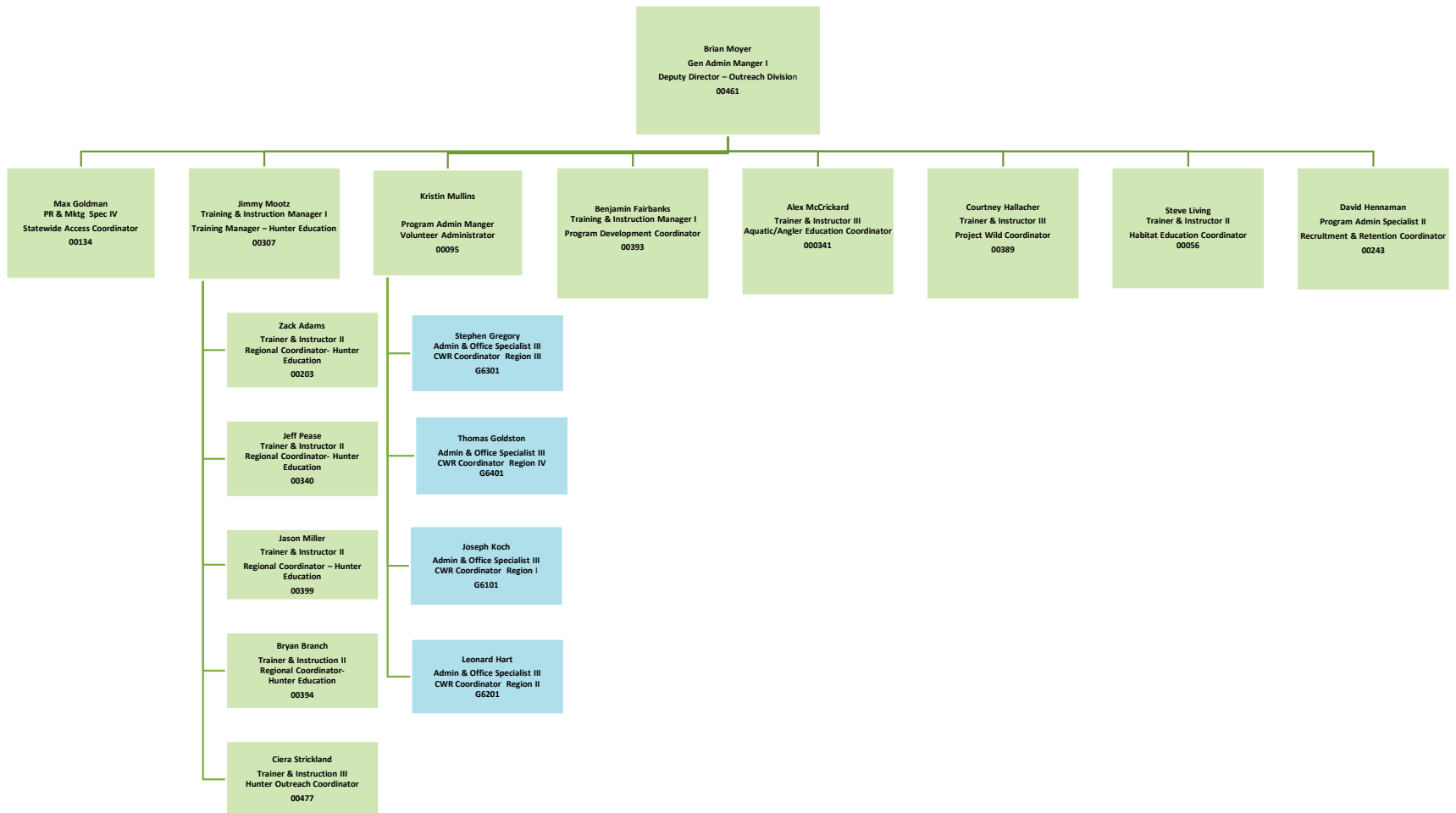
# Outreach Division



# Outreach Division Marketing & Public Relations Headquarters

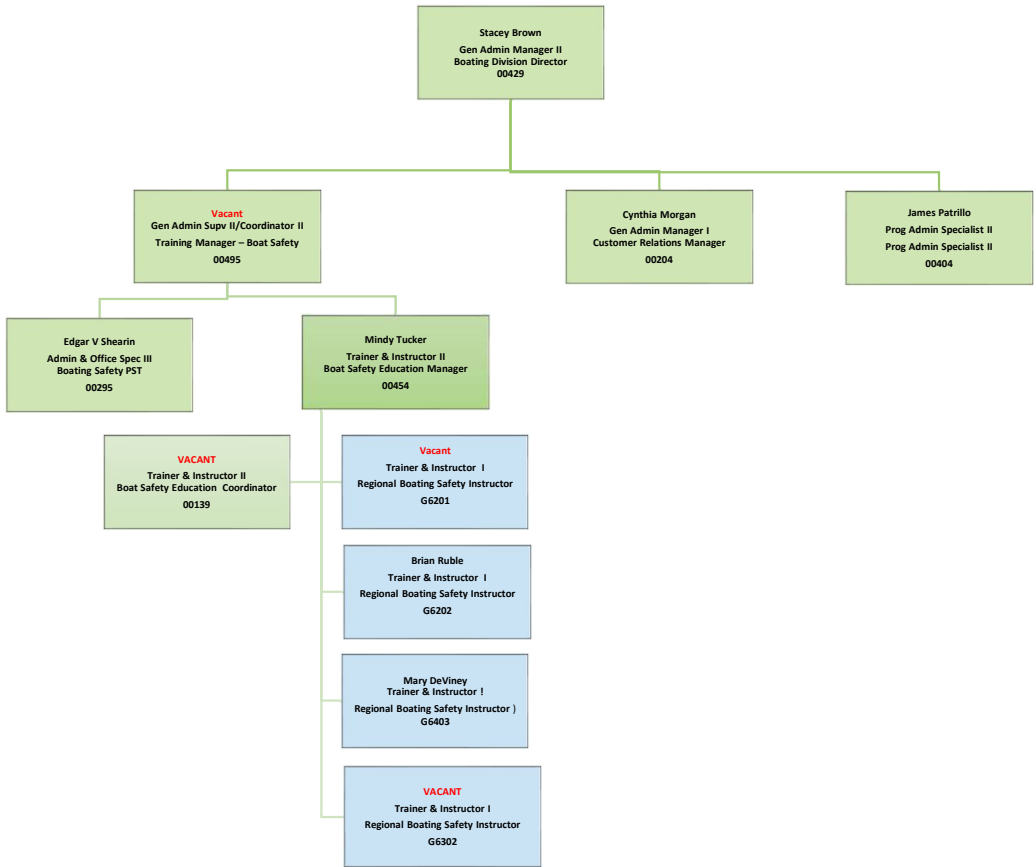


# Outreach Division Recreation & Education

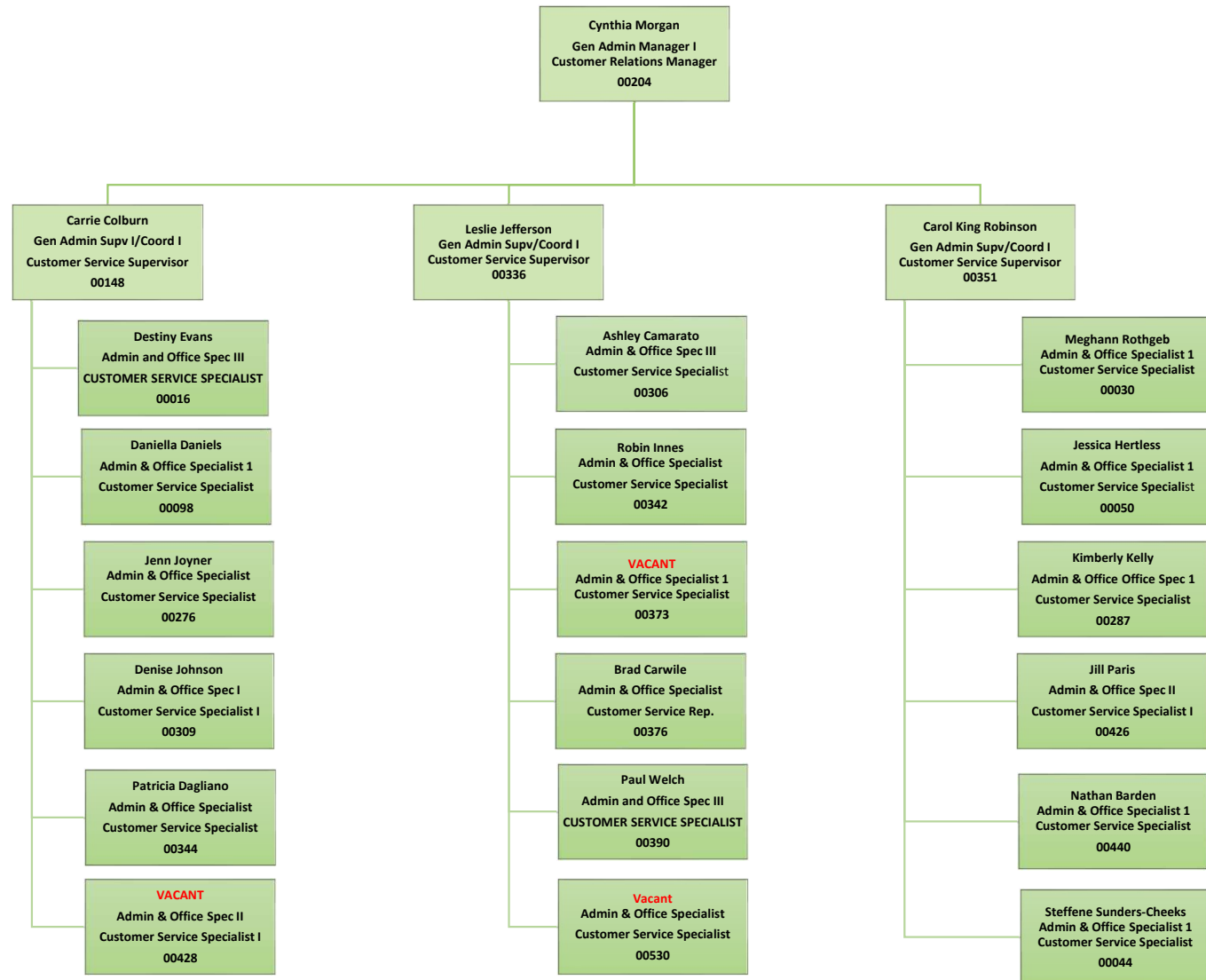


# Boating Division

# Boating Division

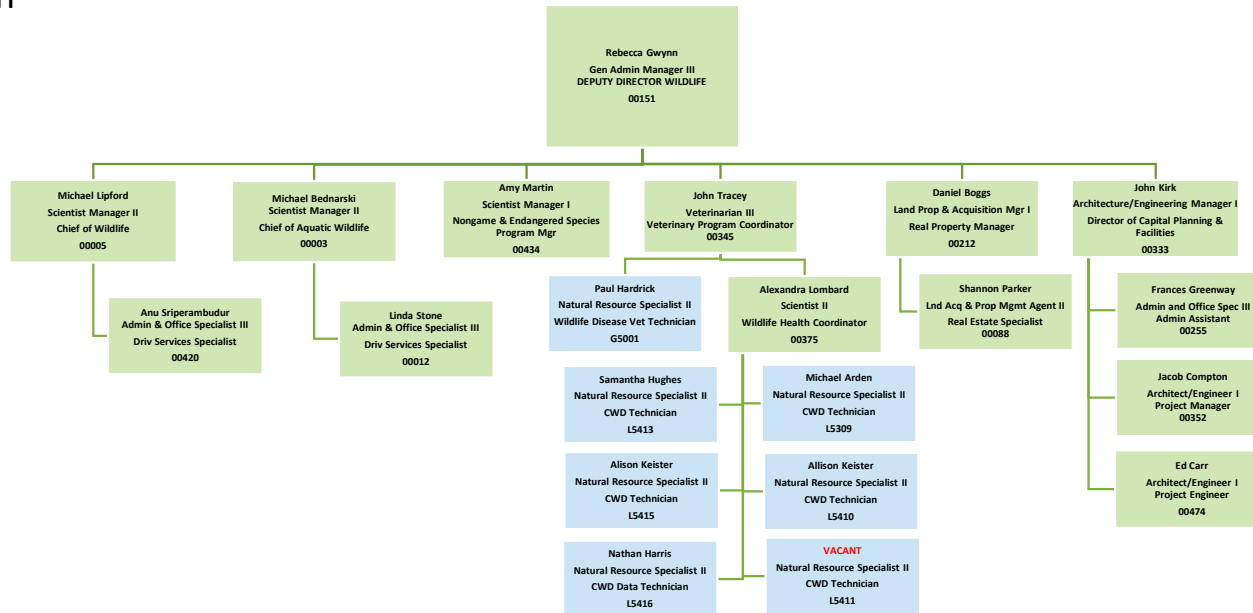


# Boating Division – Customer Relations

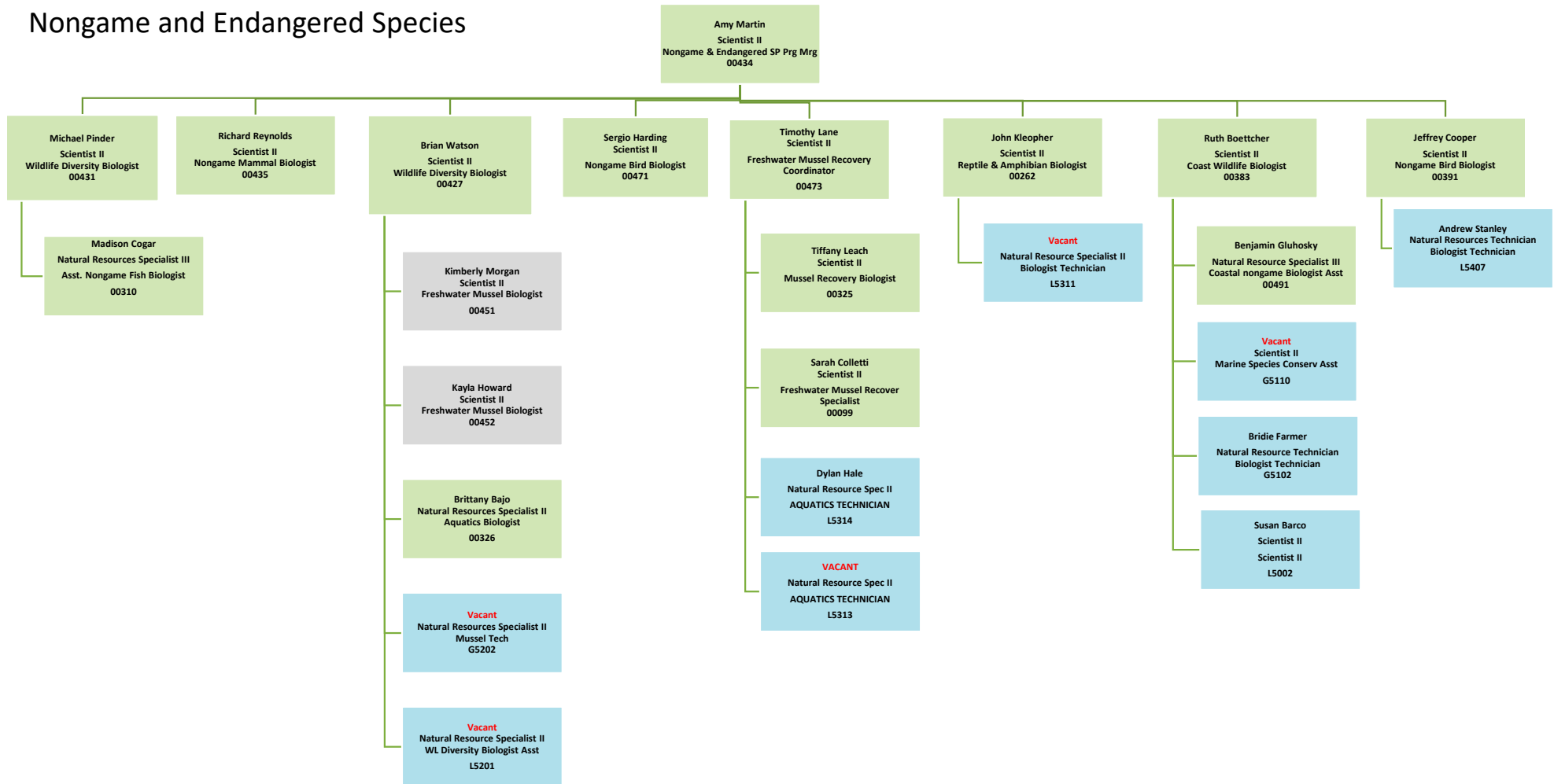


# Executive Office, Wildlife, & Aquatic Divisions

**Executive Office:**  
 Nongame and Endangered Species  
 Veterinary Program  
 Capital Programs Unit  
 Land Acquisition

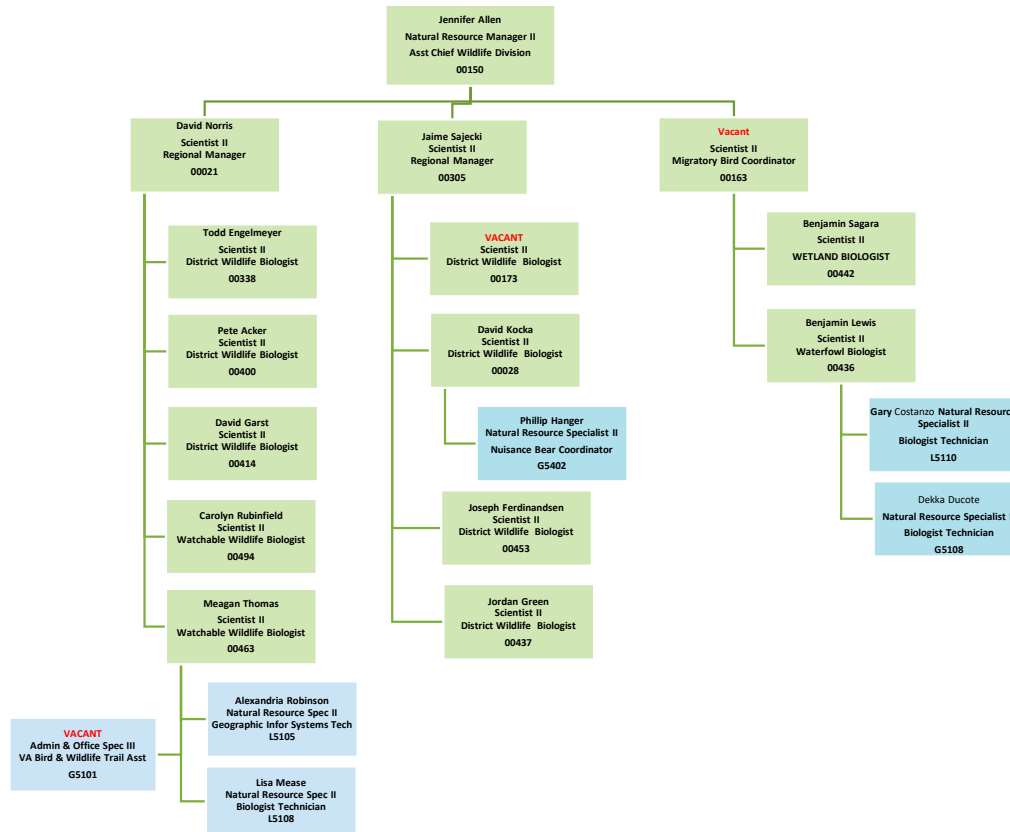


# Executive Office— Nongame and Endangered Species

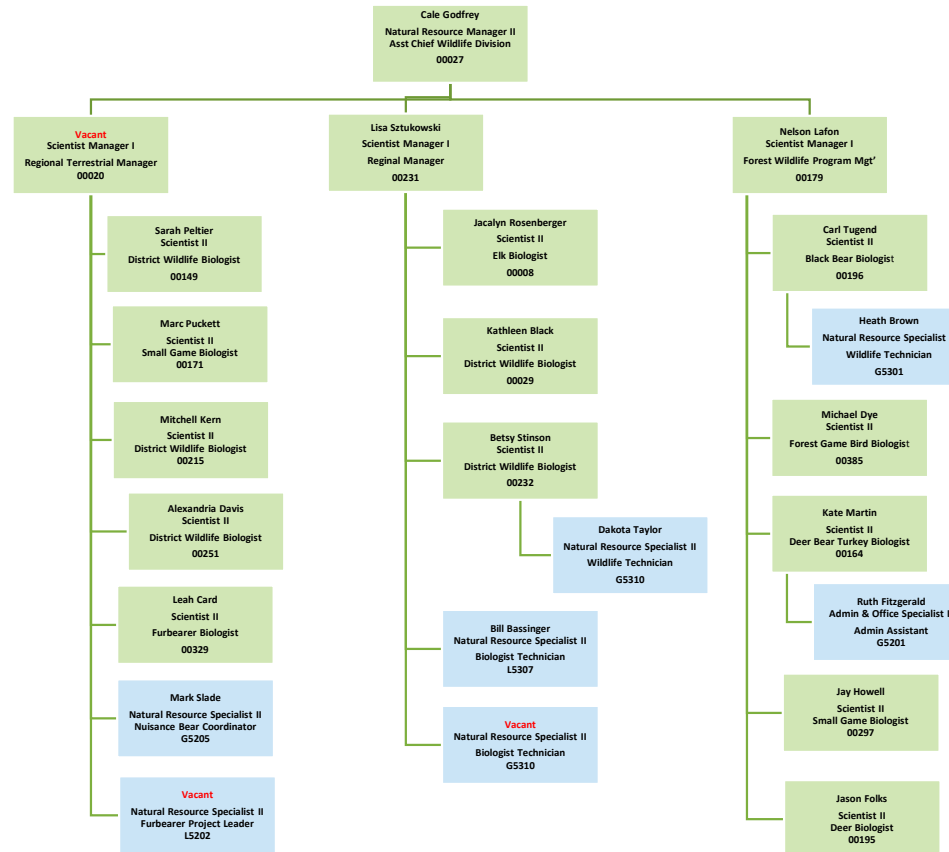




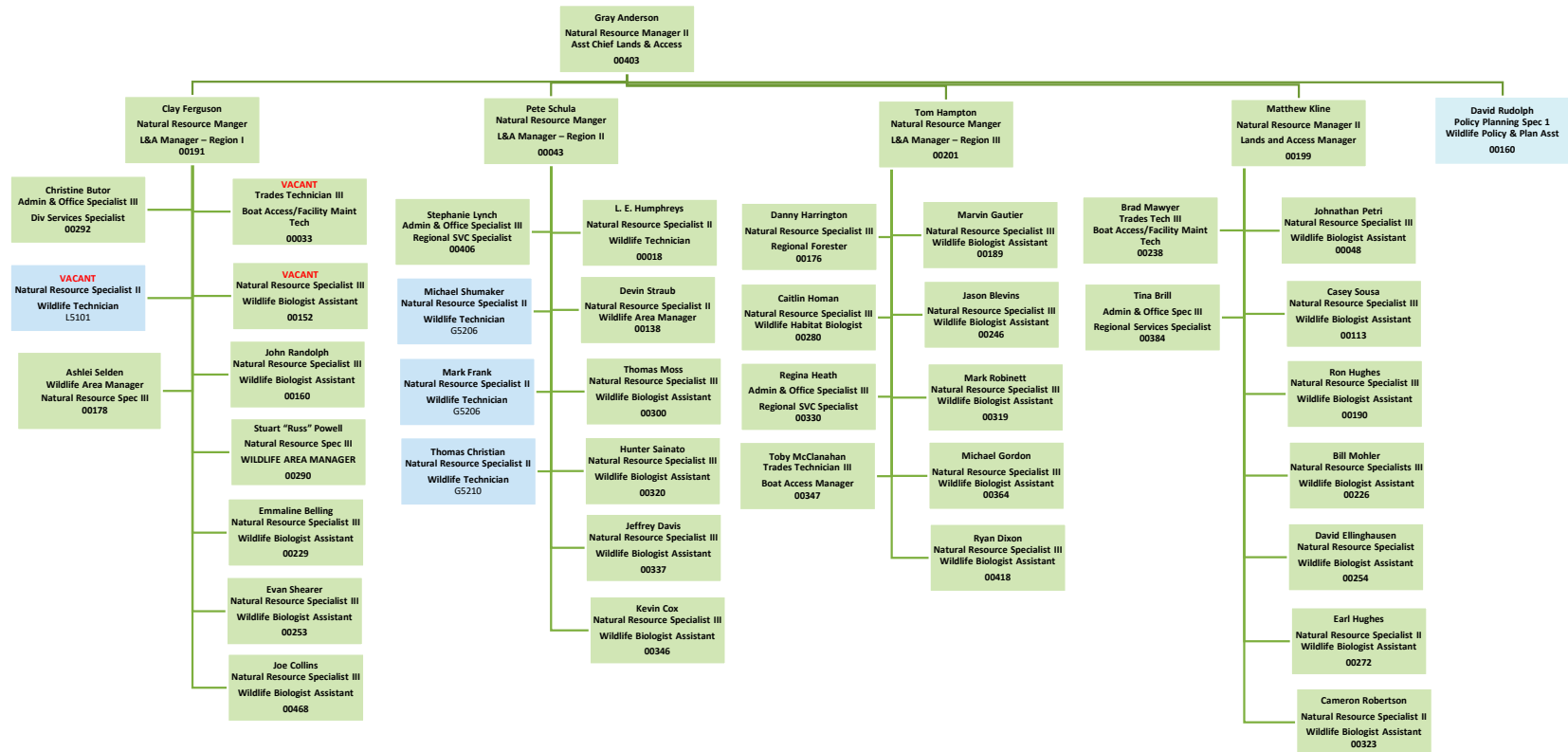
# Wildlife Division - Region I & IV Programs



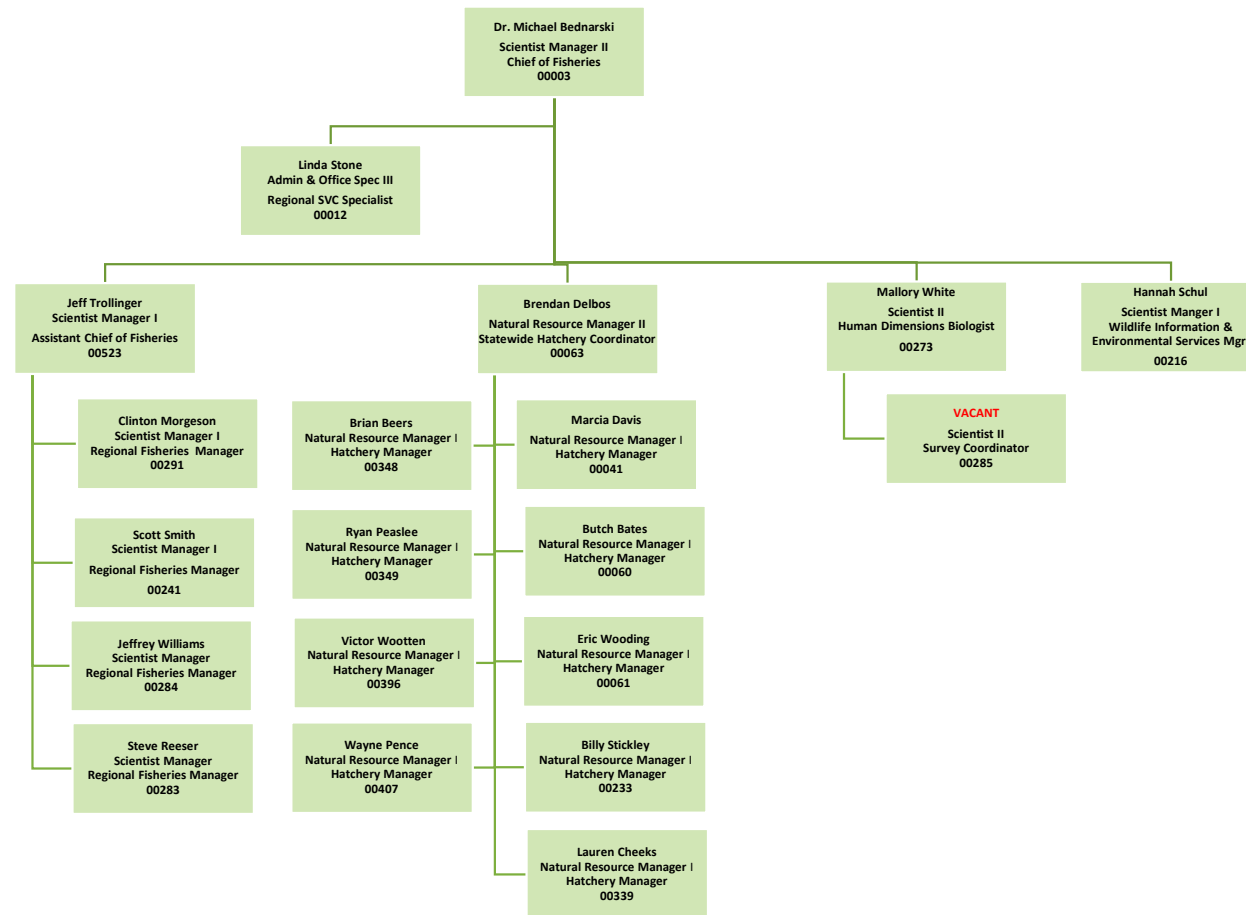
# Wildlife Division - Region II & III Programs



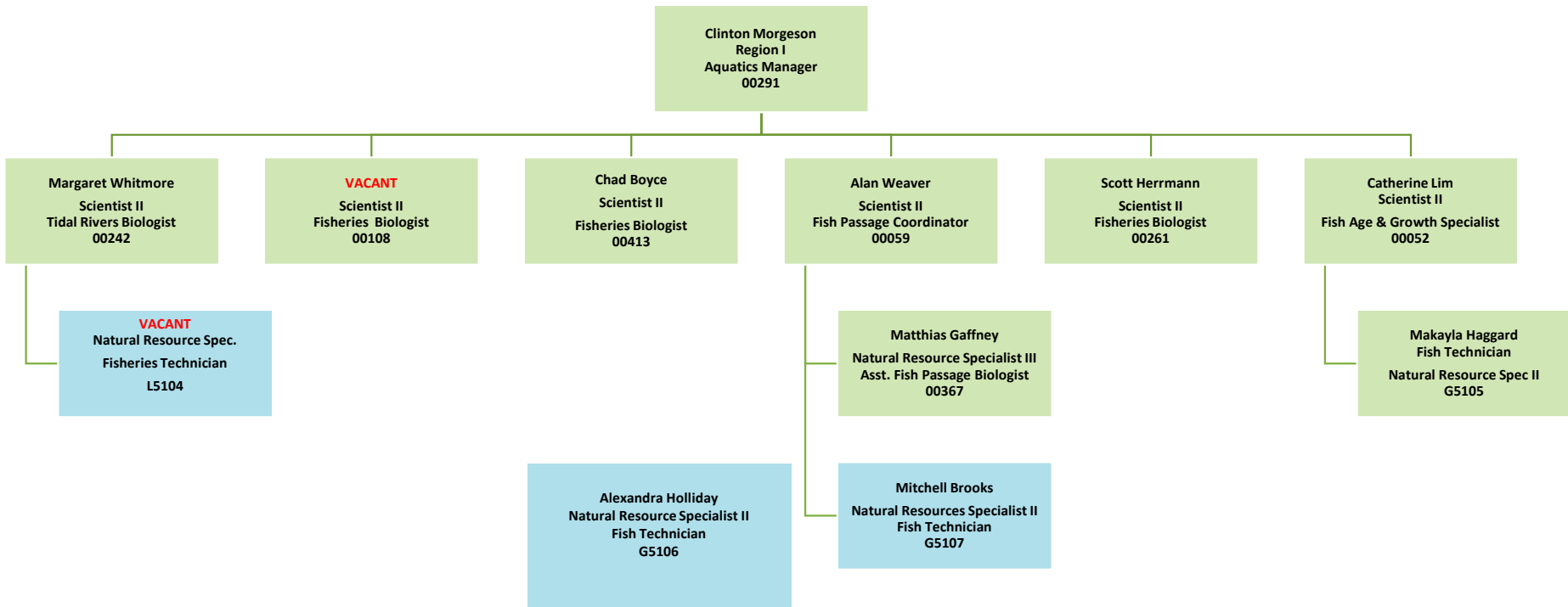
# Wildlife Division - Lands and Access



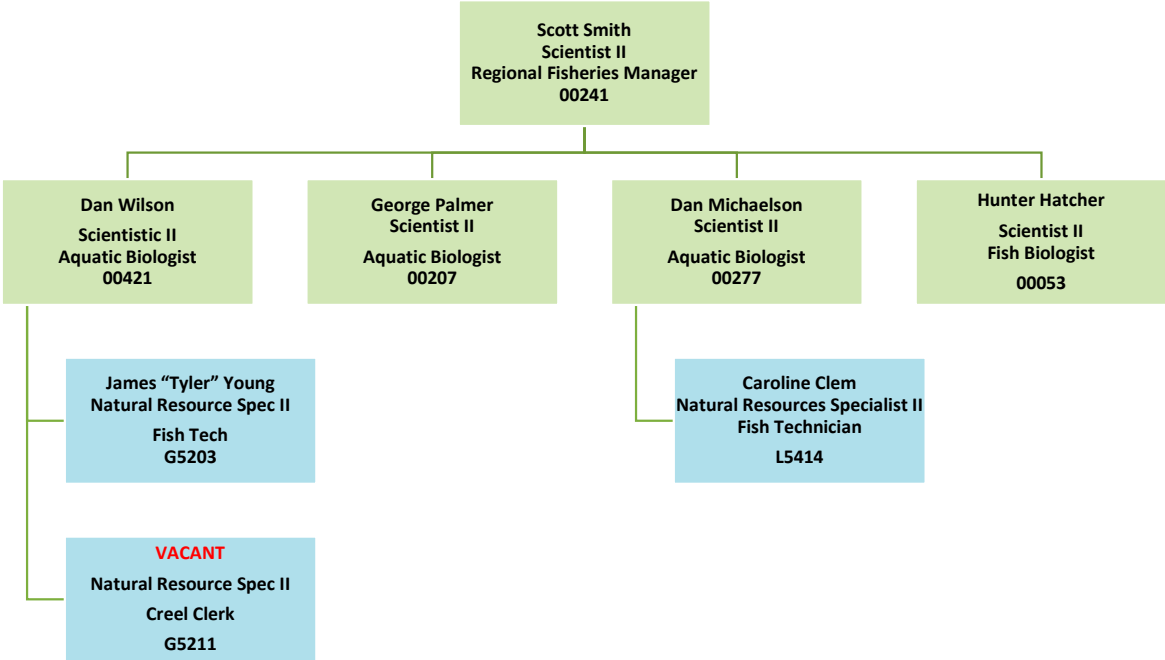
# Aquatic Wildlife Division - Headquarters



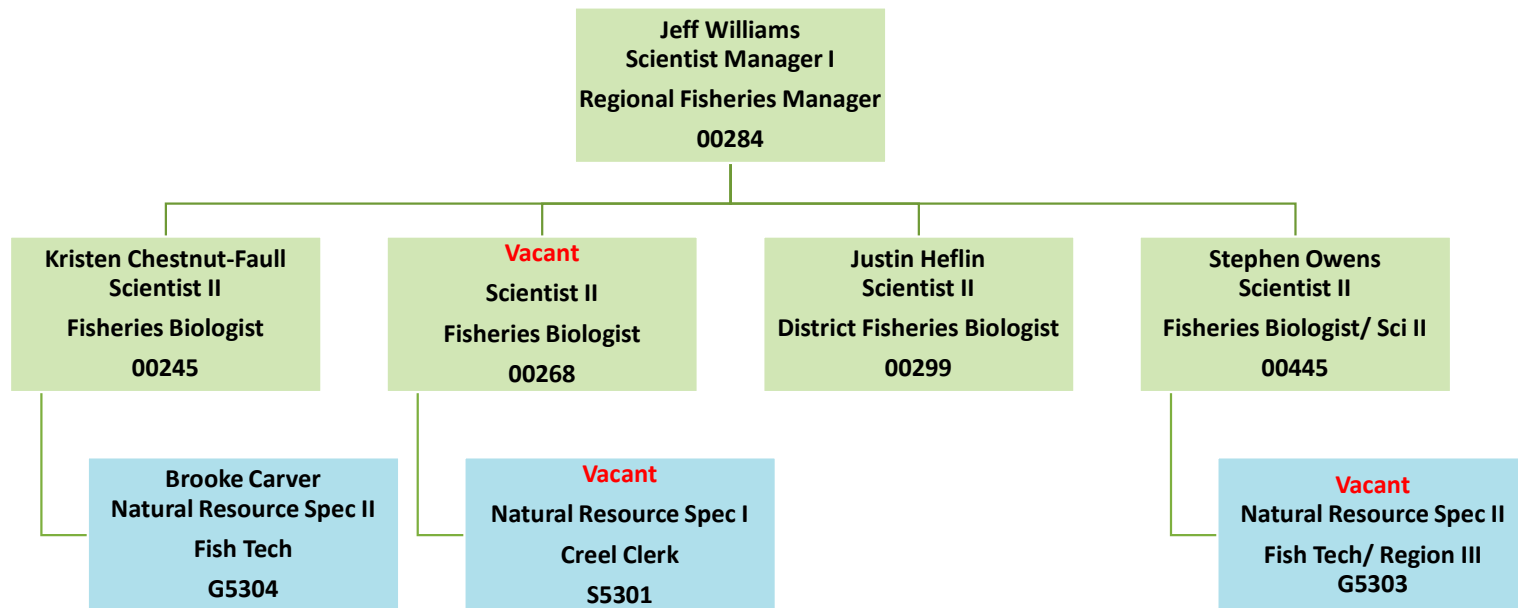
# Aquatic Wildlife Division - Aquatics Region I



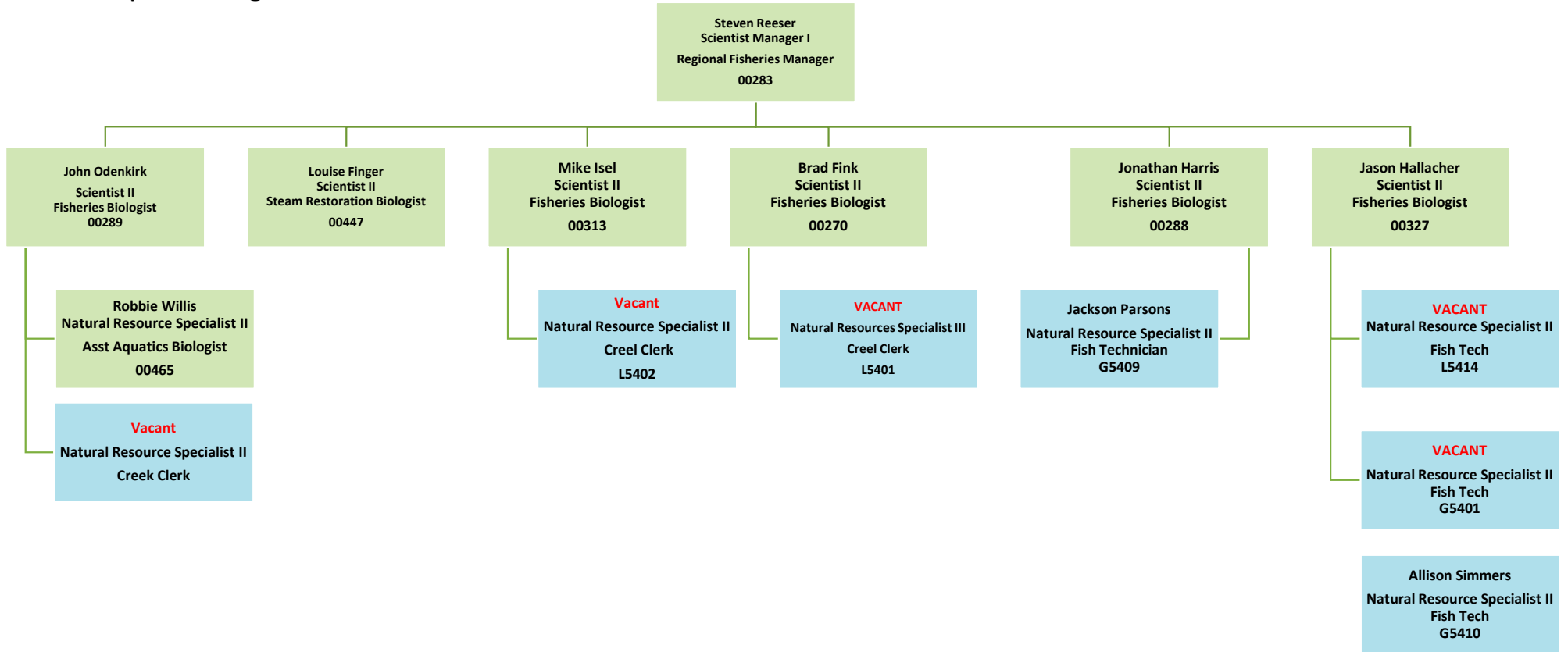
Aquatic Wildlife Division -  
Aquatics Region II



Aquatic Wildlife Division -  
Aquatics Region III

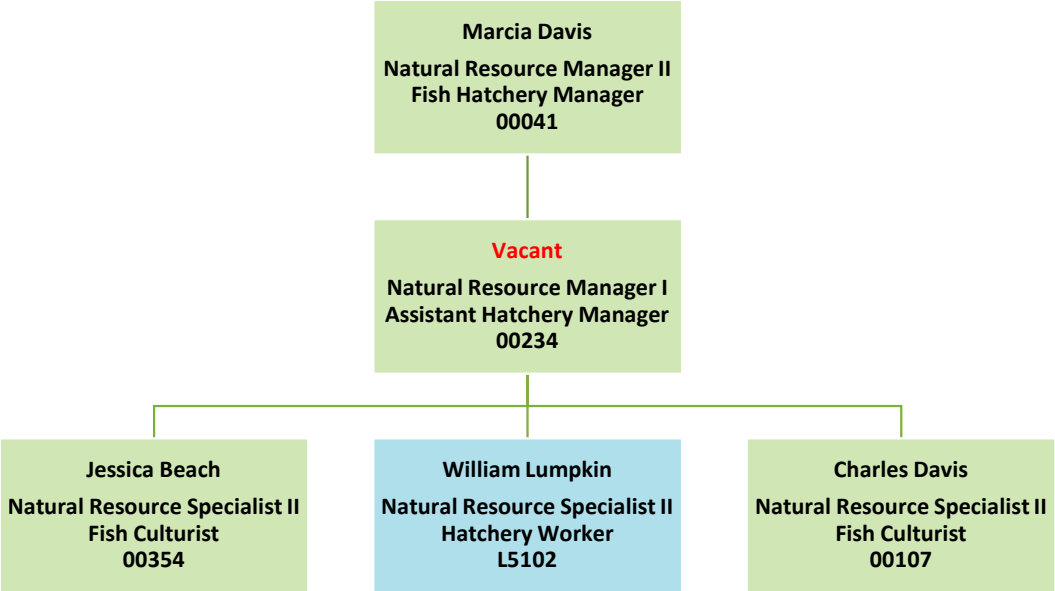


# Aquatic Wildlife Division - Aquatics Region IV

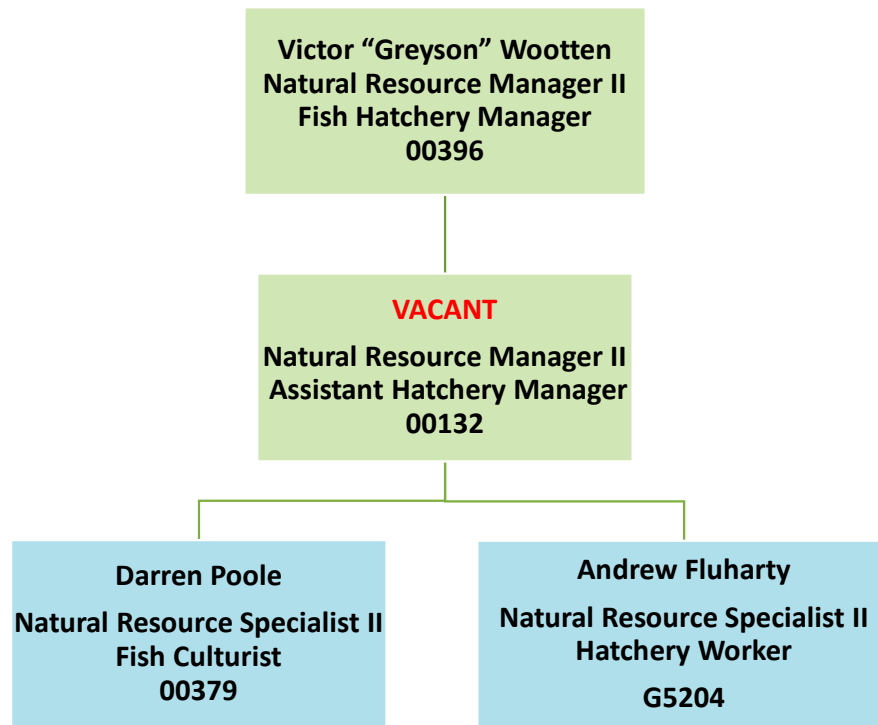




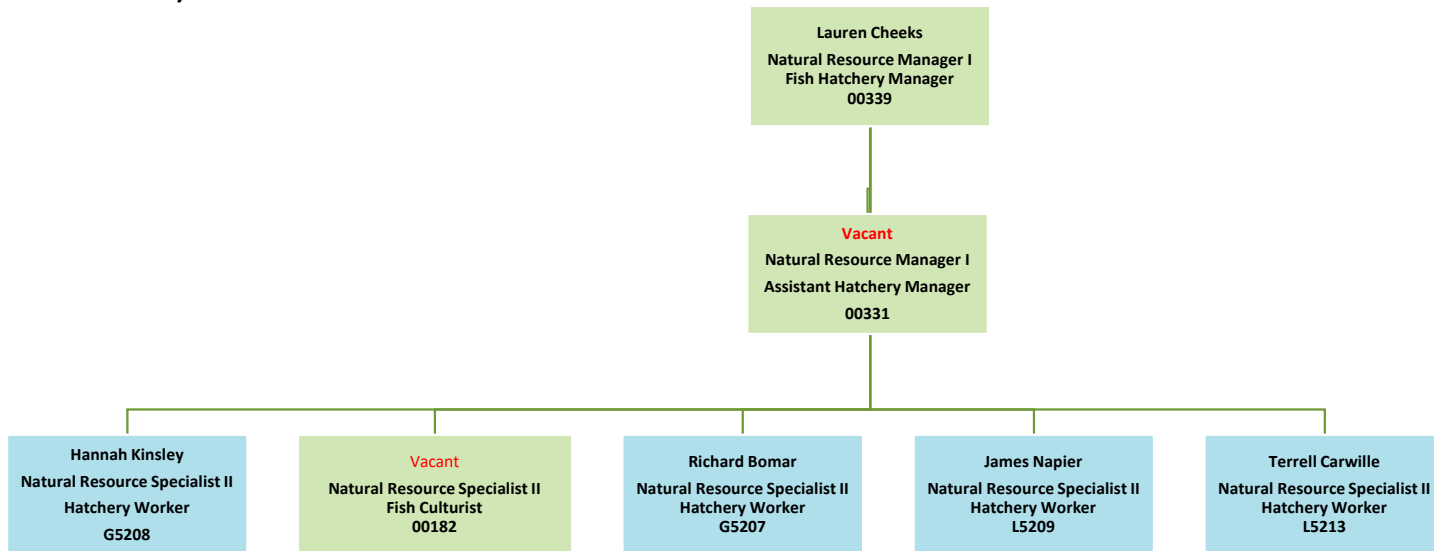
Aquatic Wildlife Division -  
King & Queen Hatchery



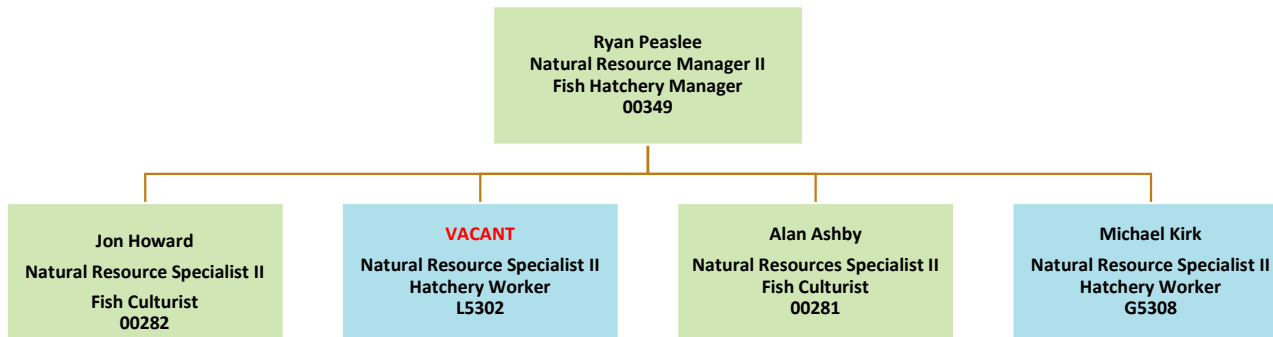
Aquatic Wildlife Division -  
Montebello Hatchery



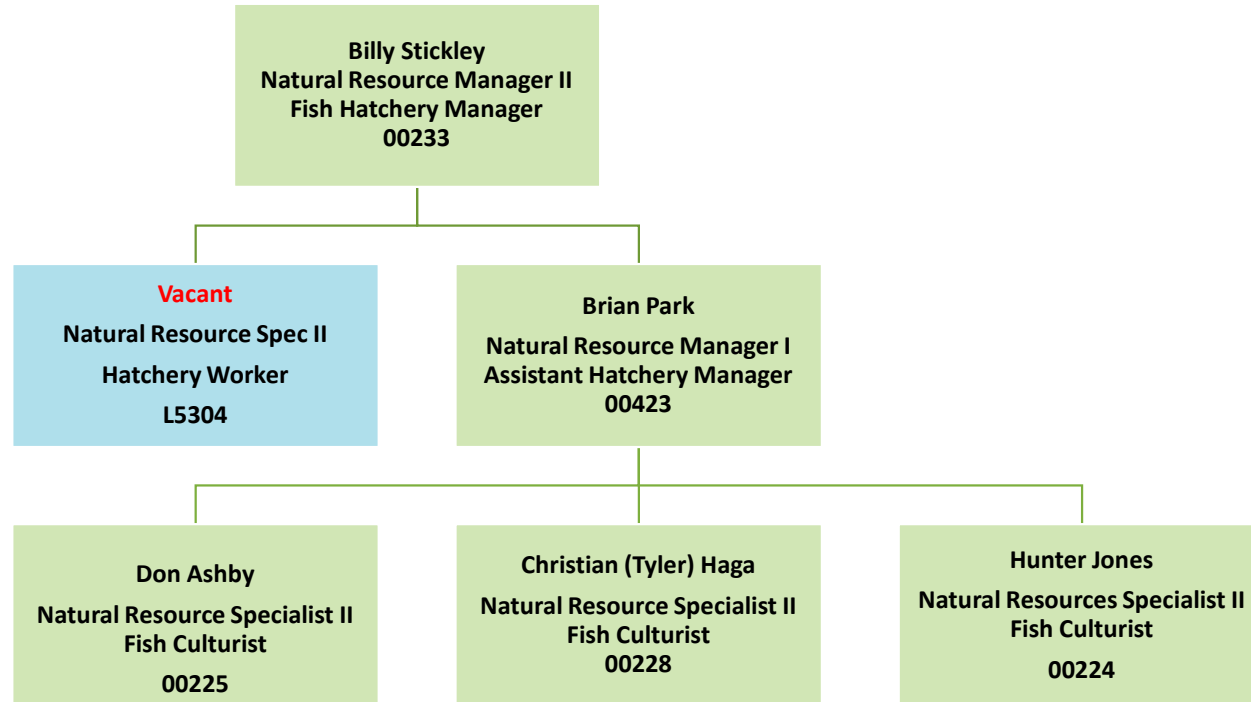
# Aquatic Wildlife Division - Vic Thomas Hatchery



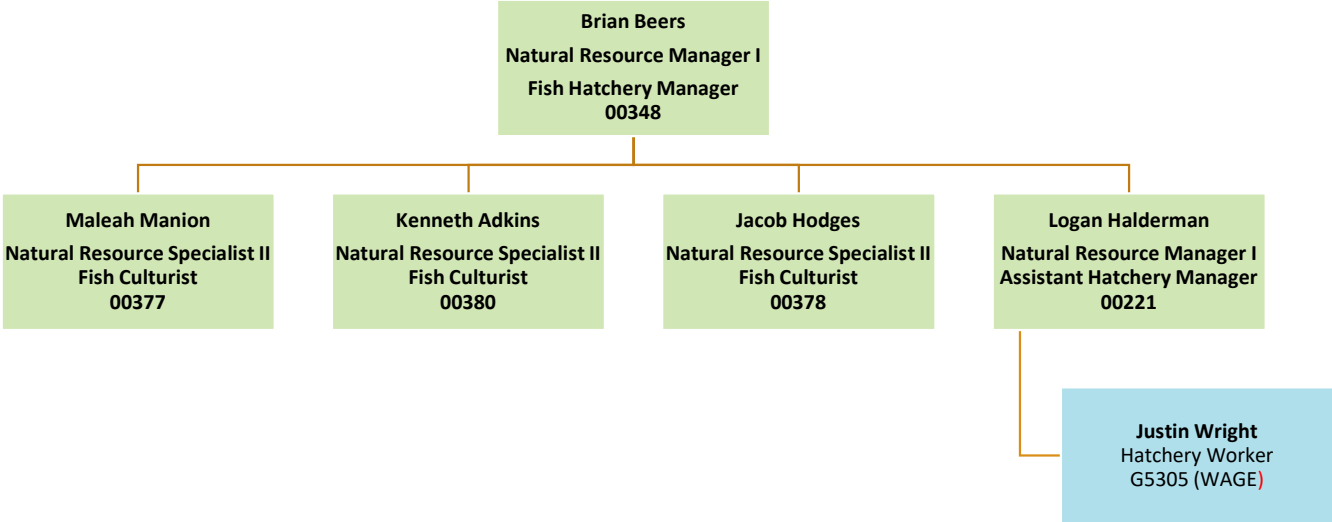
# Aquatic Wildlife Division - Buller Hatchery



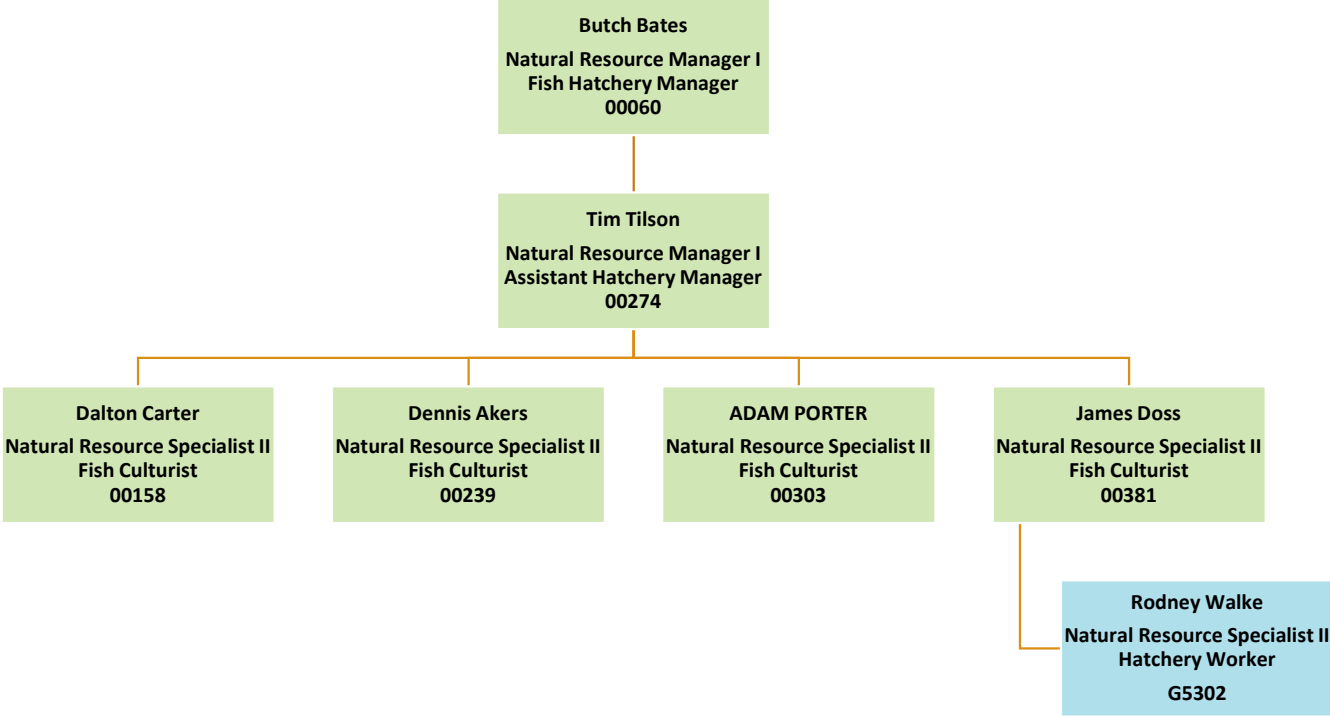
Aquatic Wildlife Division -  
Marion Hatchery



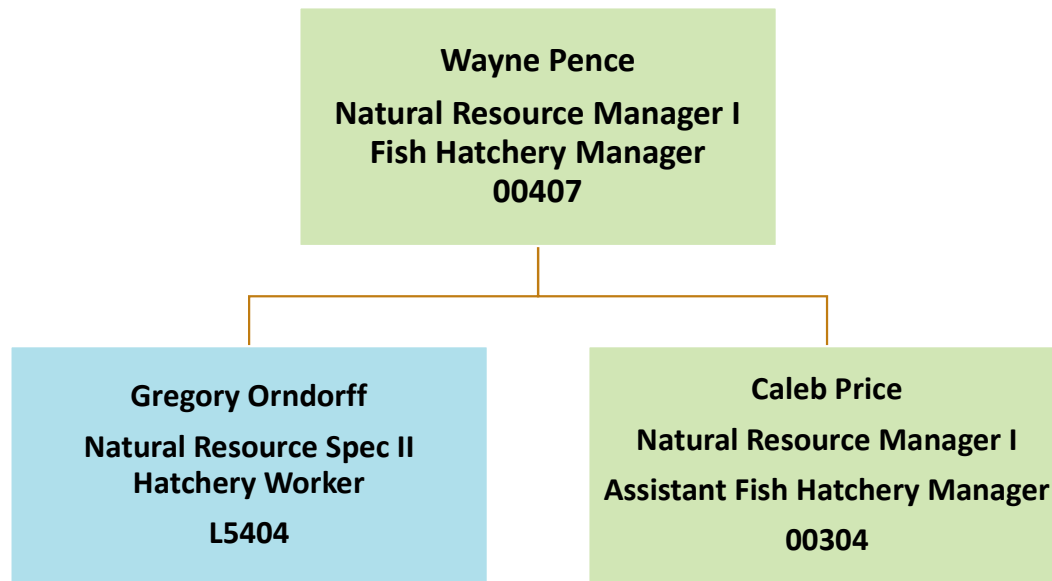
Aquatic Wildlife Division -  
Paint Bank Hatchery



Aquatic Wildlife Division -  
Wytheville Hatchery

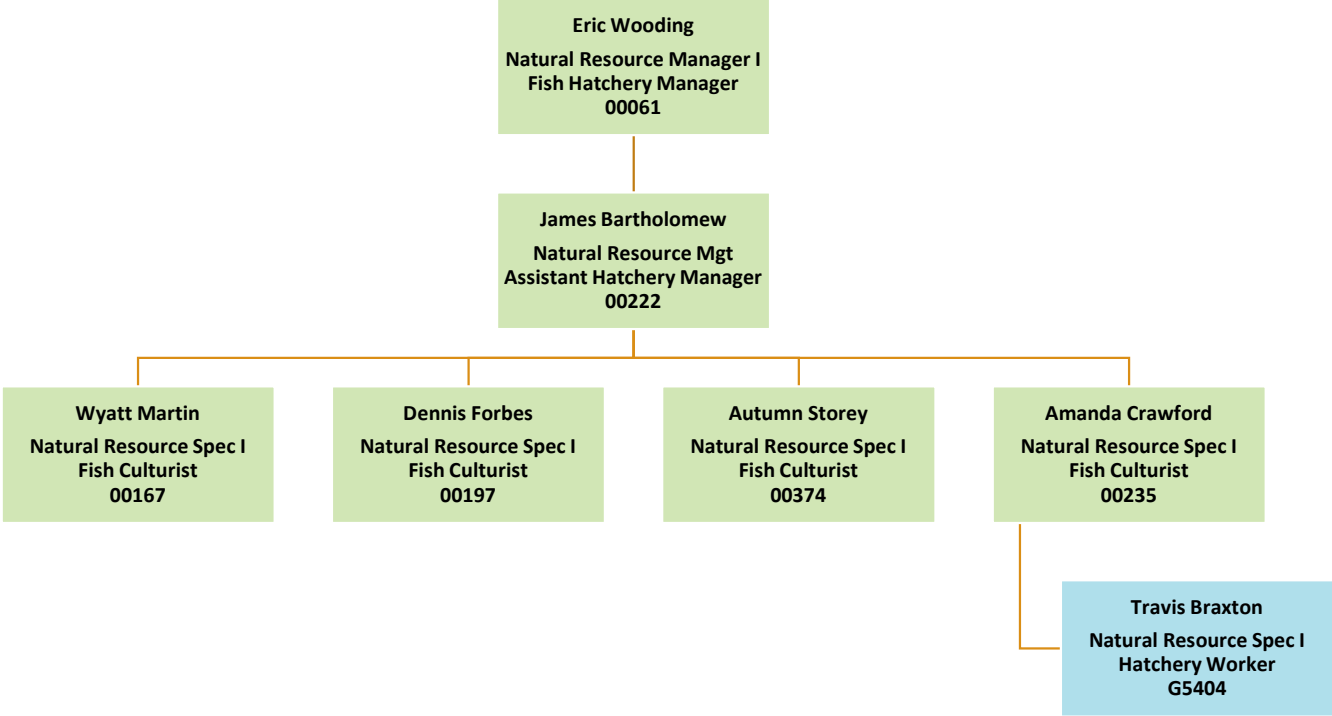


Aquatic Wildlife Division -  
Front Royal Hatchery





Aquatic Wildlife Division -  
Coursey Springs Hatchery



Aquatic Wildlife Division -  
Environmental Services Section (ESS) and  
Fish and Wildlife Information Section (FWIS)

