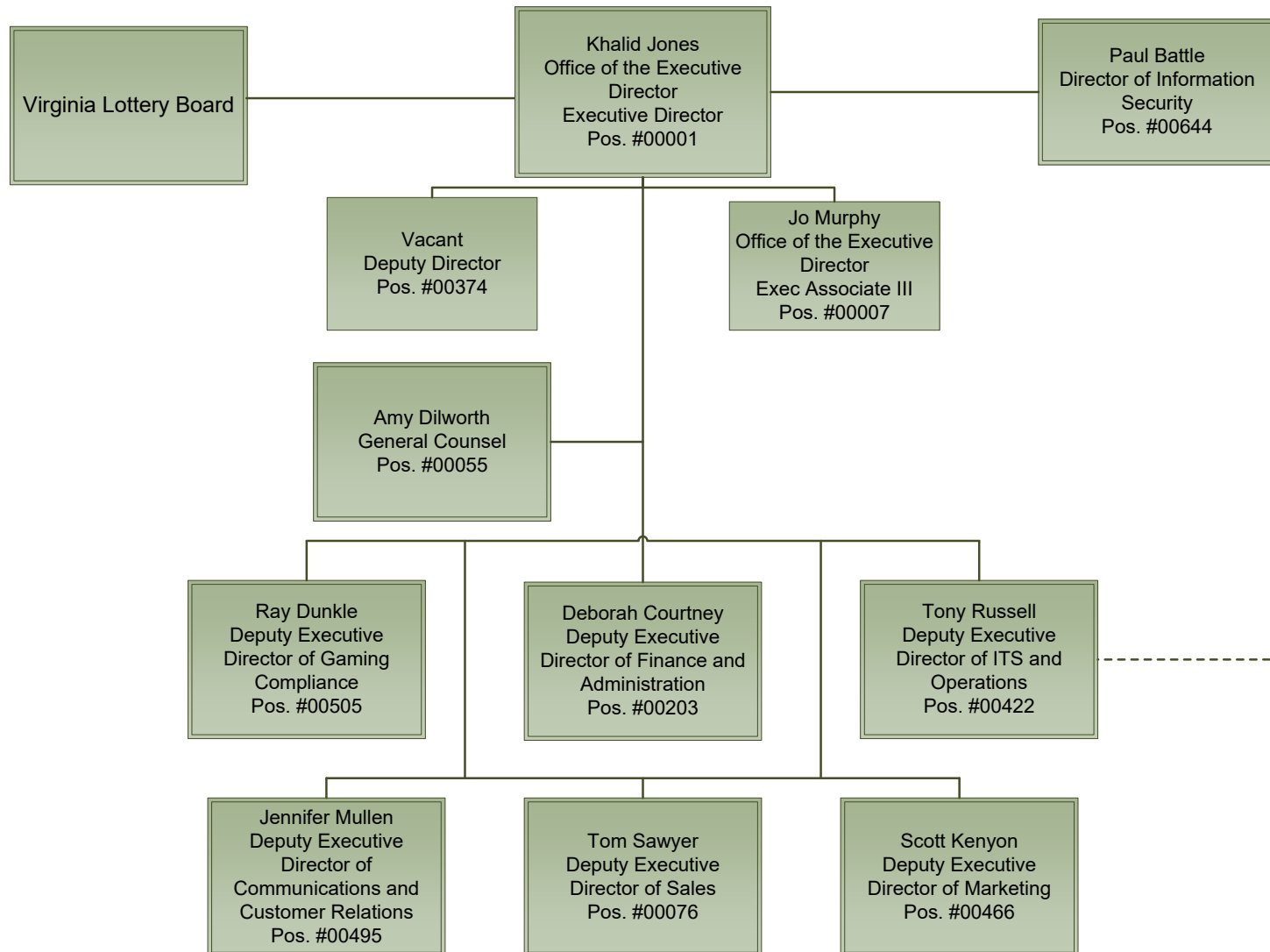
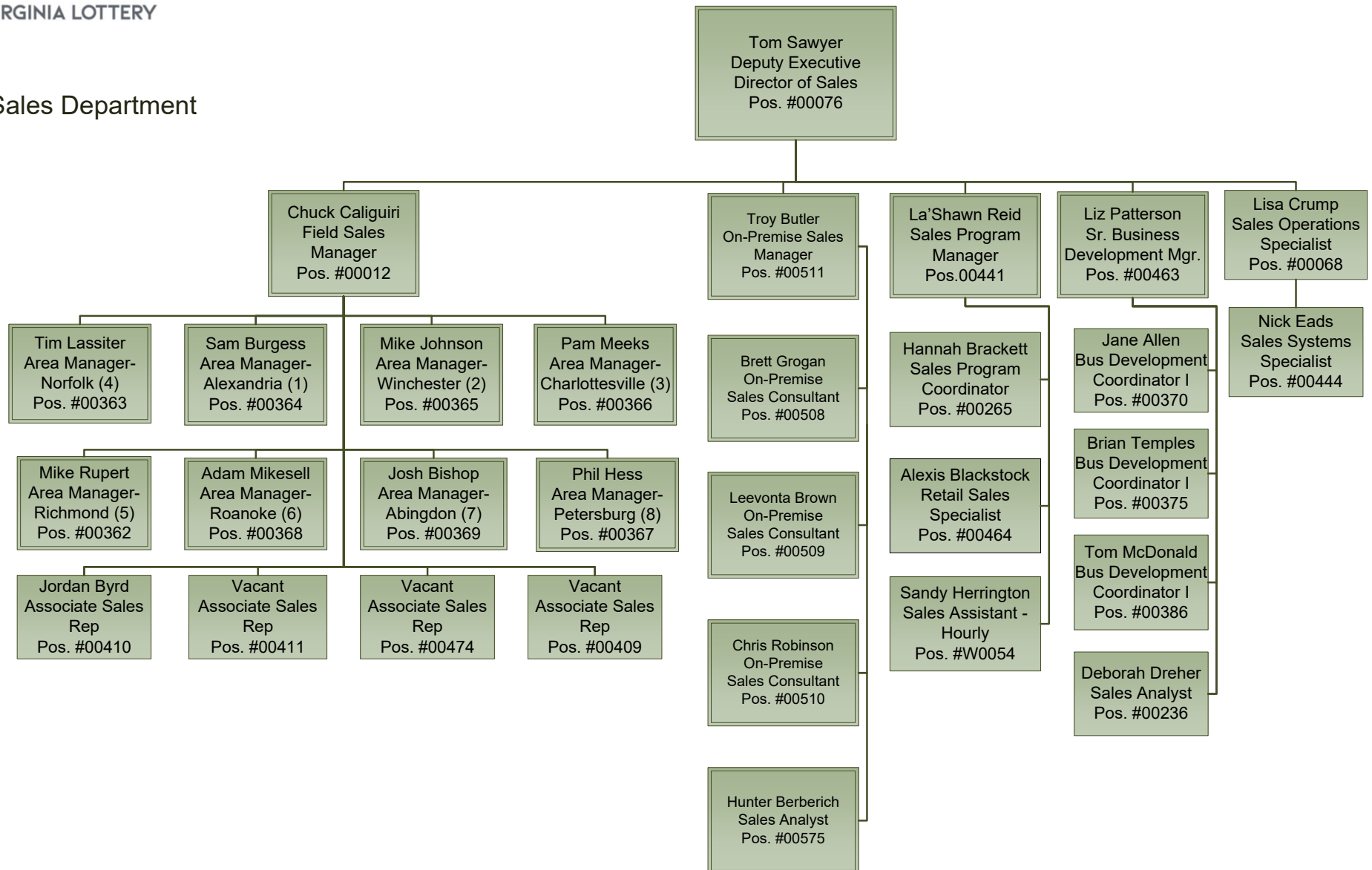




Virginia Lottery Organizational Structure Effective October 20, 2025

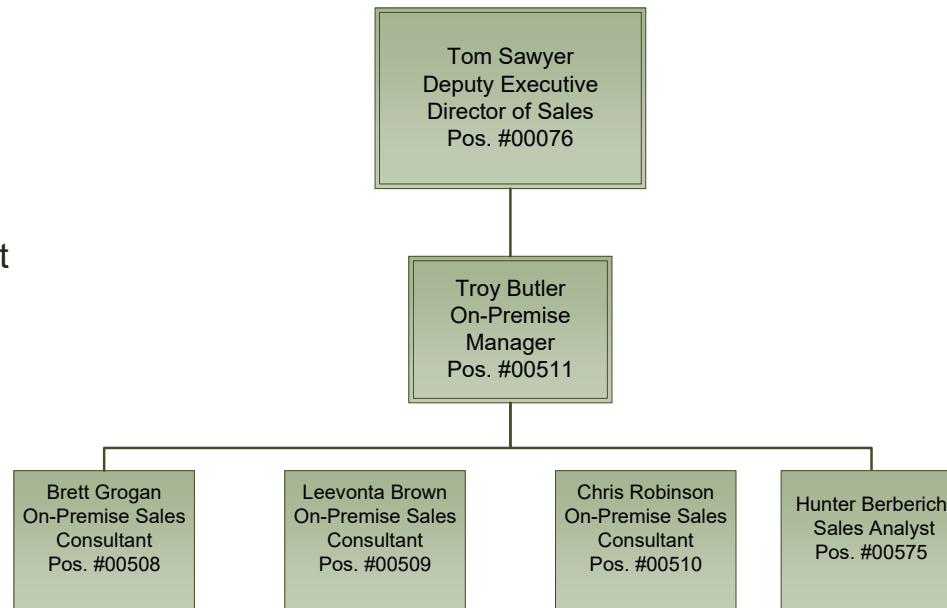


Sales Department



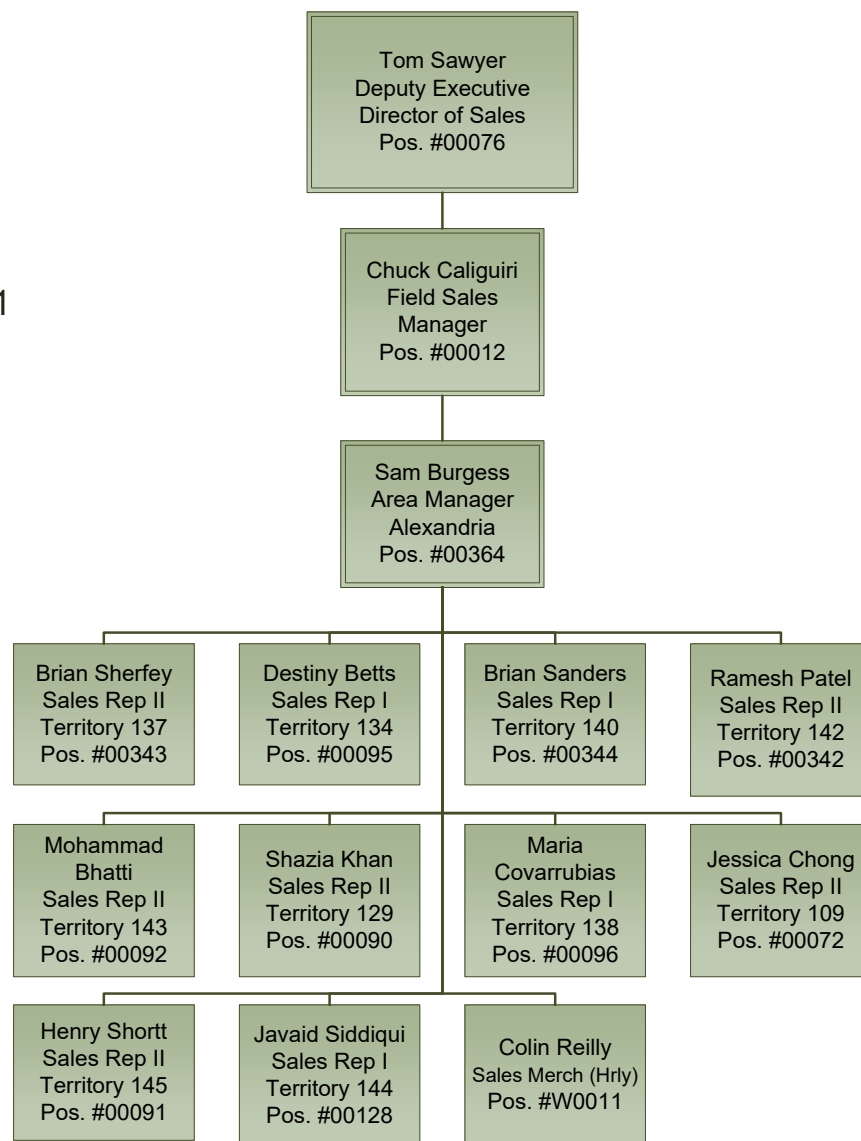


Sales Department
On-Premise



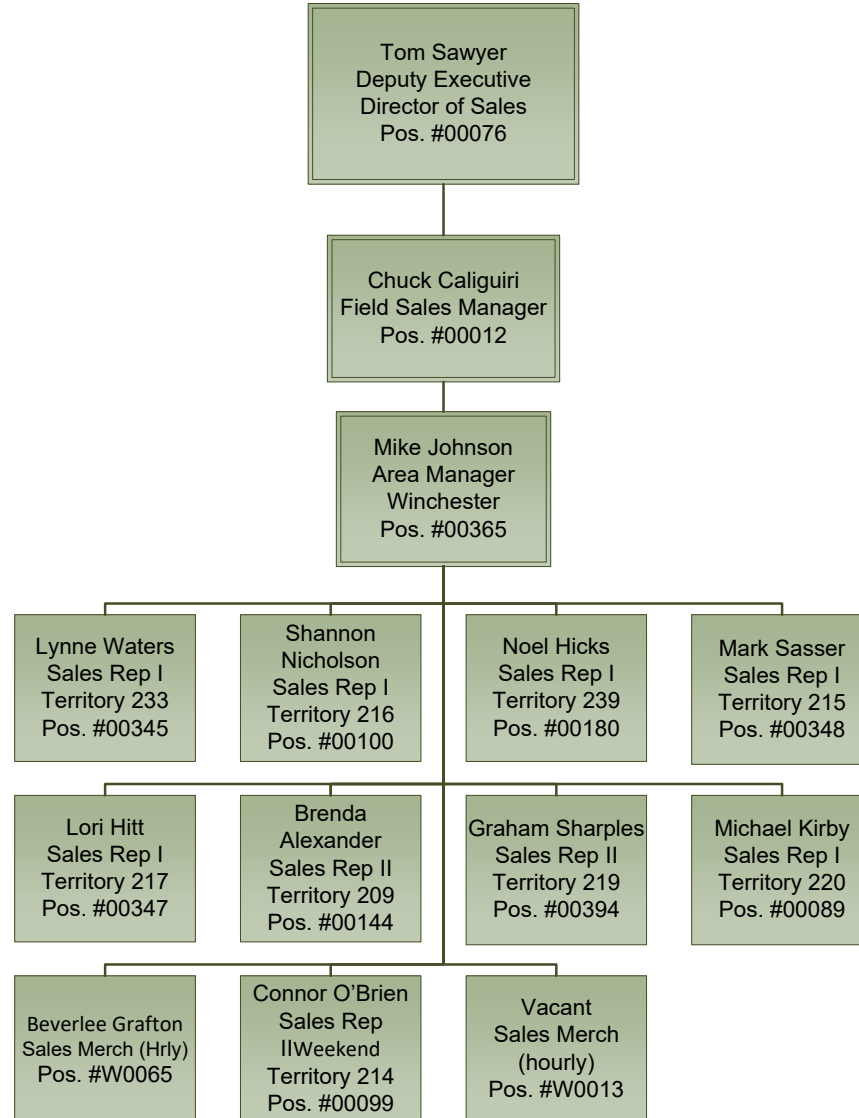


Sales Department
Woodbridge Sales Area - 1



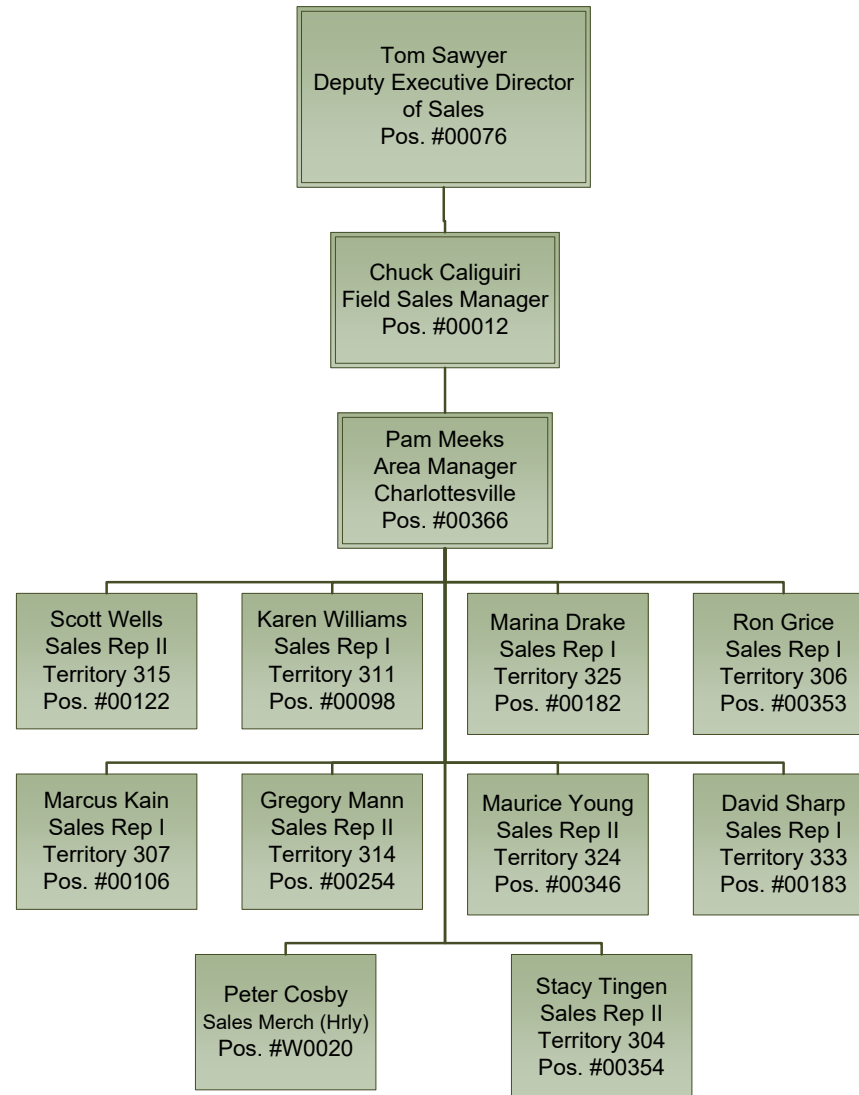


Sales Department
Harrisonburg Sales Area - 2



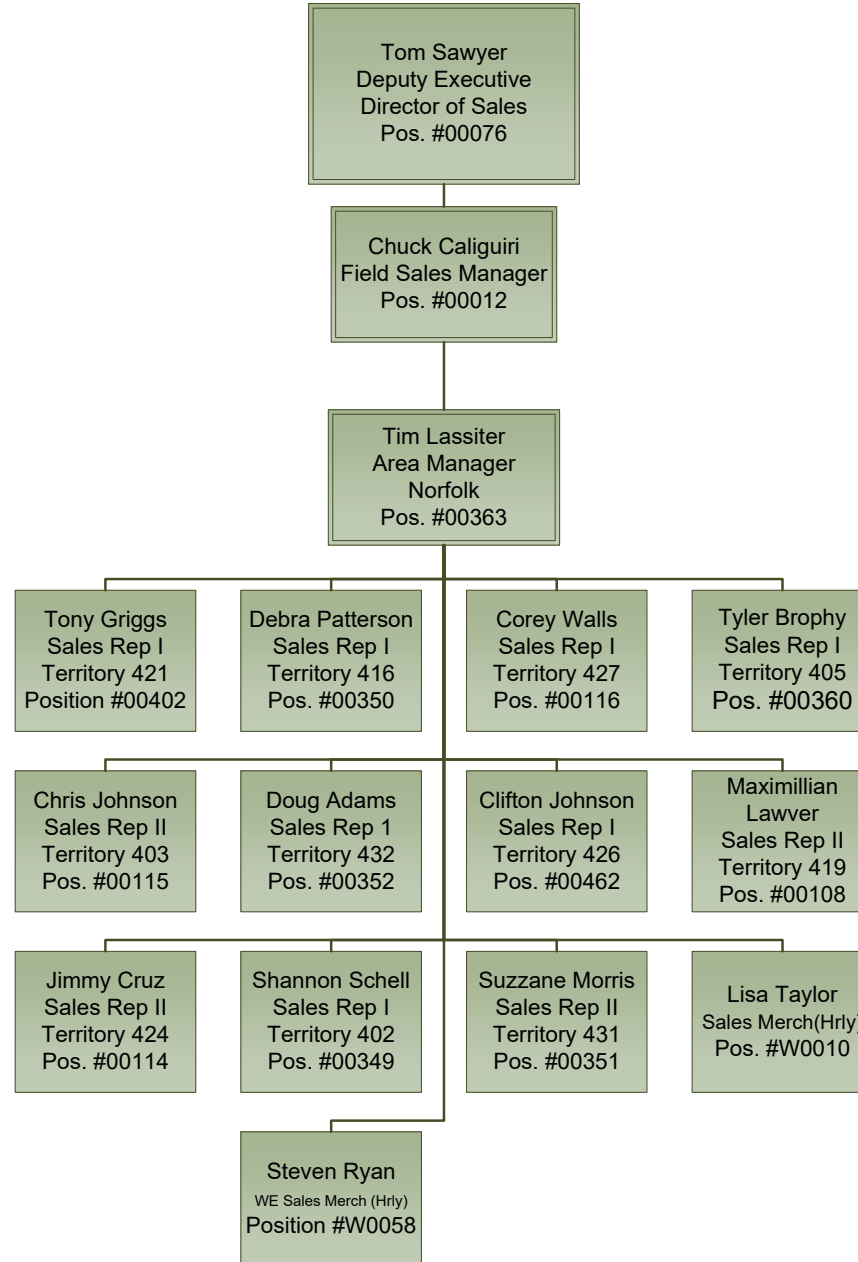


Sales Department
Farmville Sales Area - 3



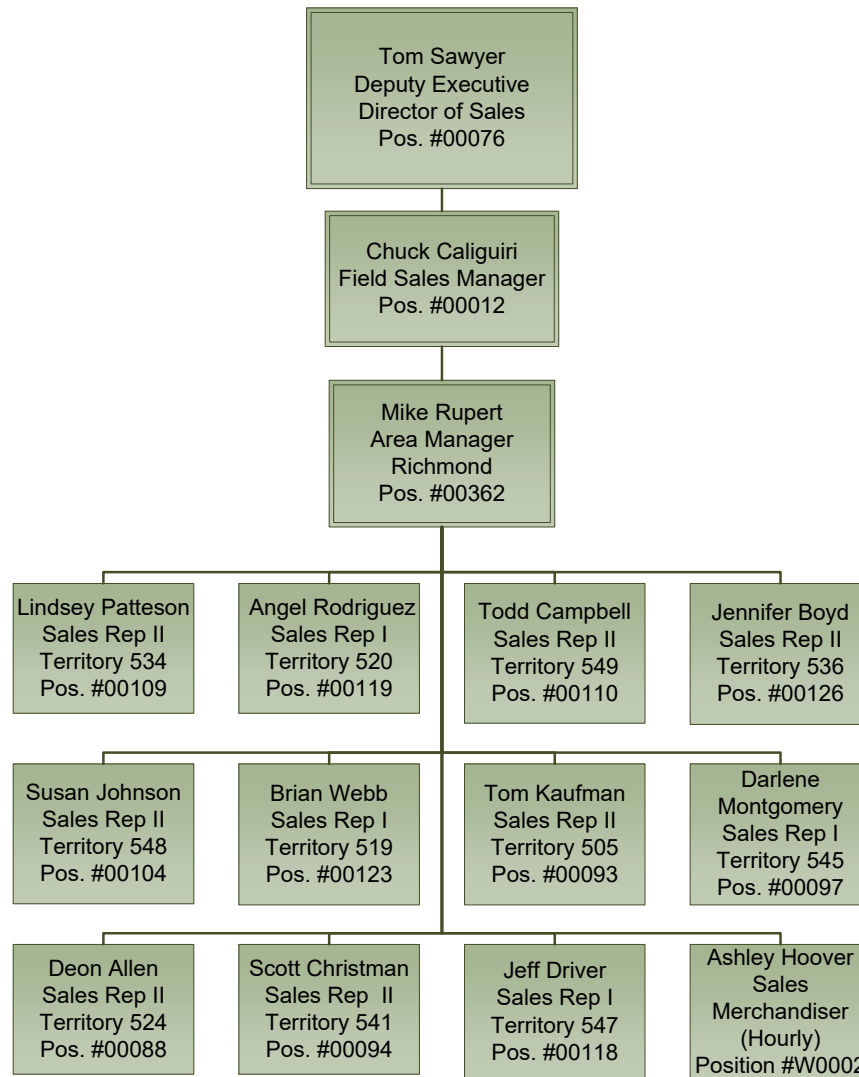


Sales Department
Norfolk Sales Area - 4



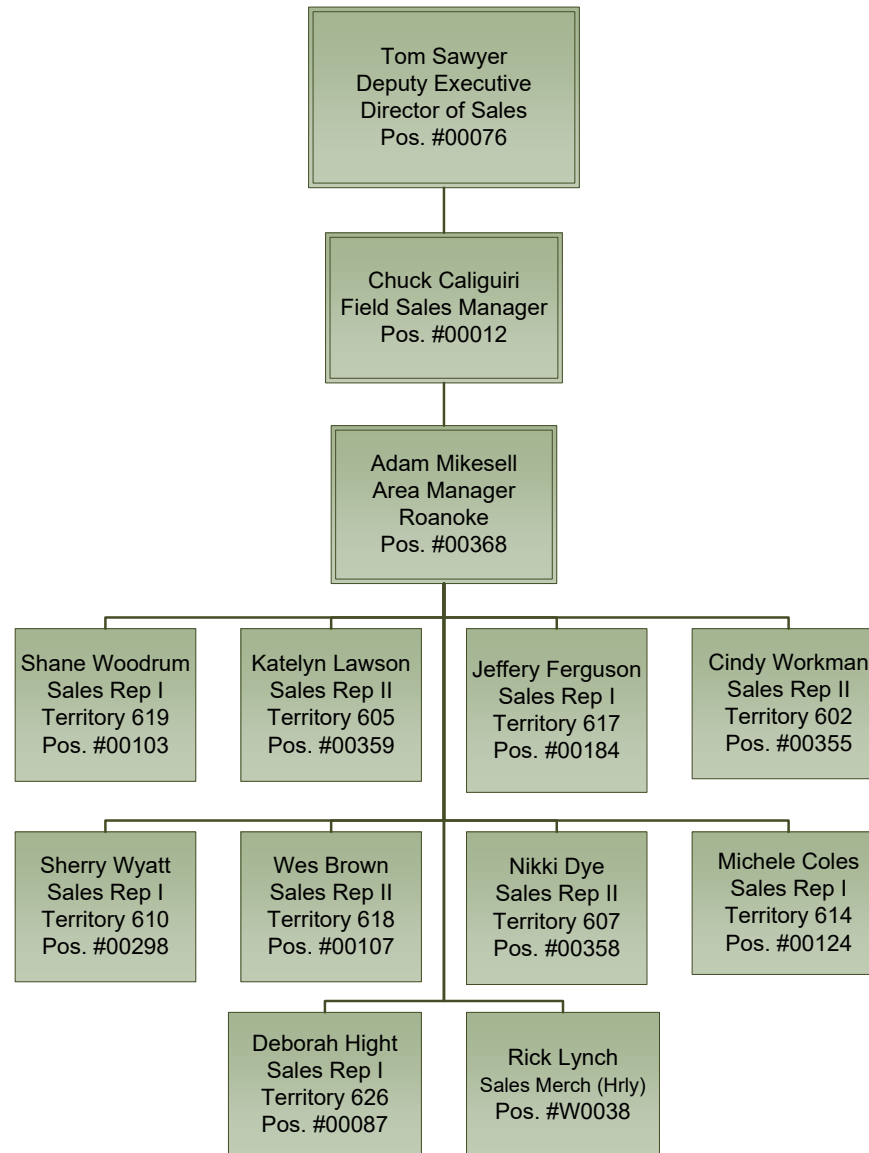


Sales Department
Richmond Sales Area - 5



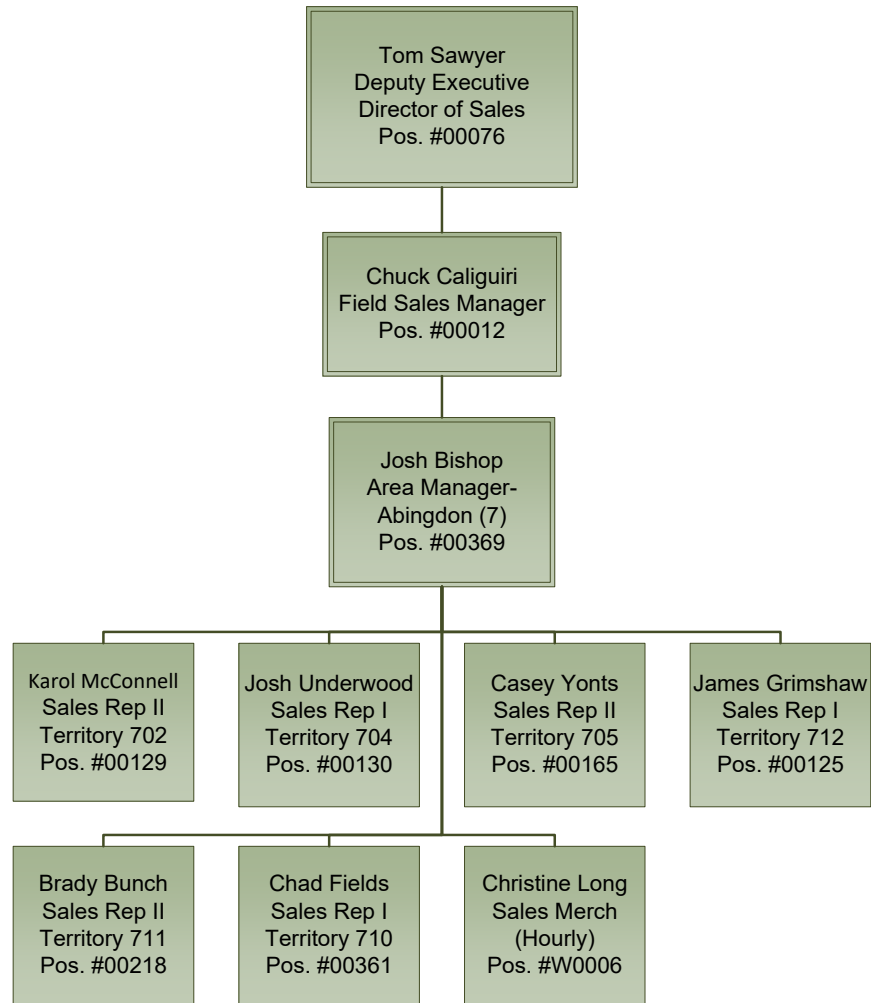


Sales Department
Roanoke Sales Area - 6



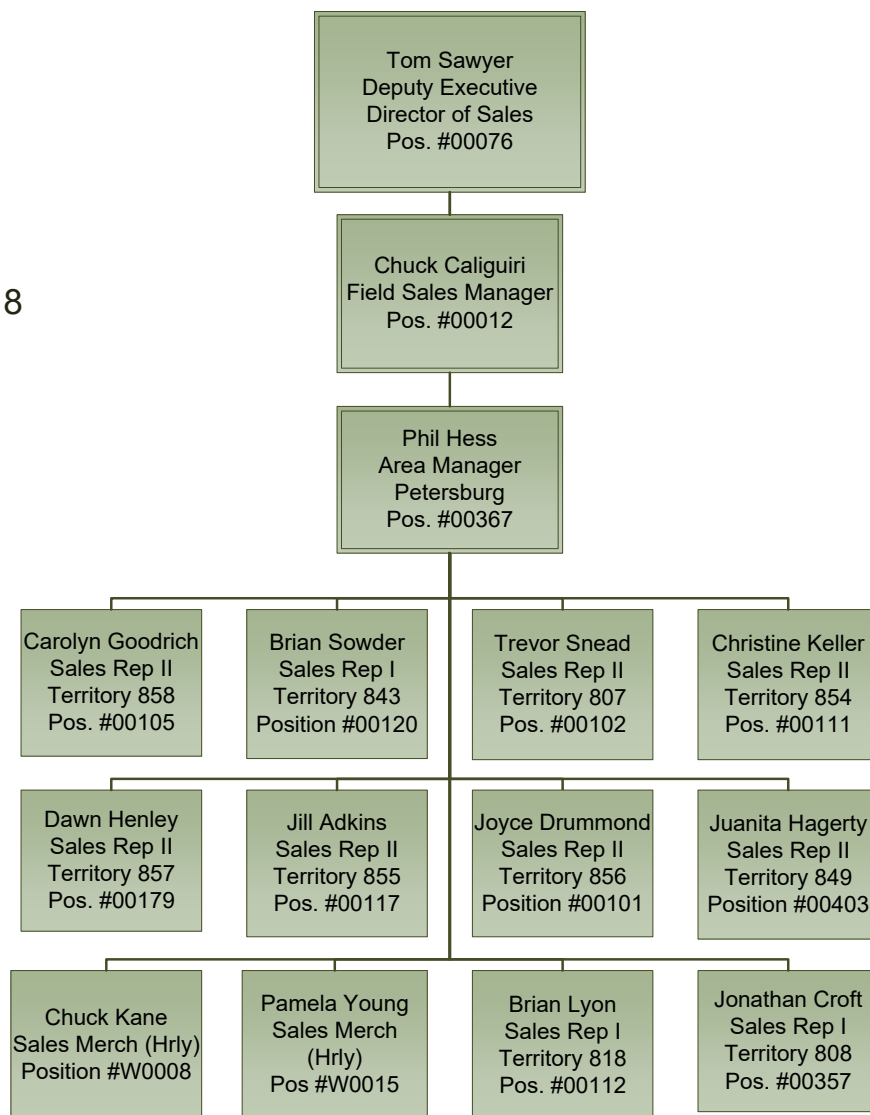


Sales Department
Abingdon Sales Area - 7



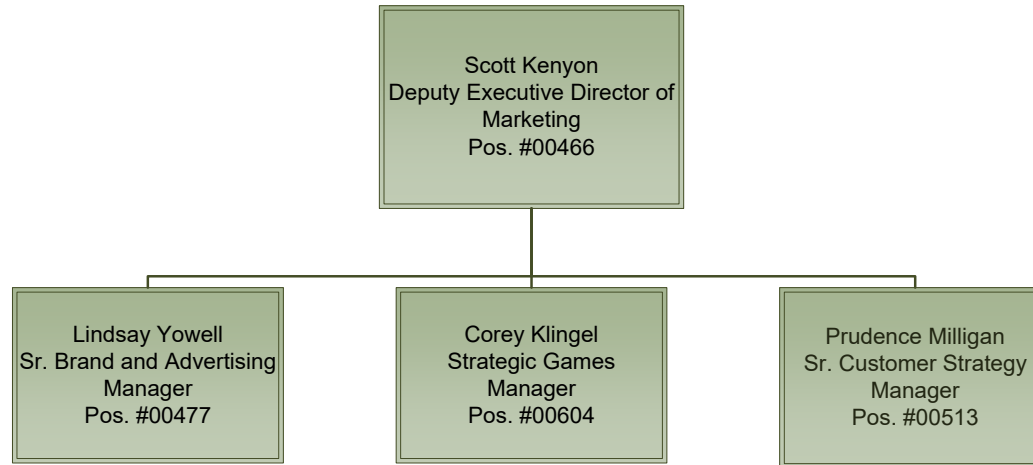


Sales Department
Williamsburg Sales Area - 8



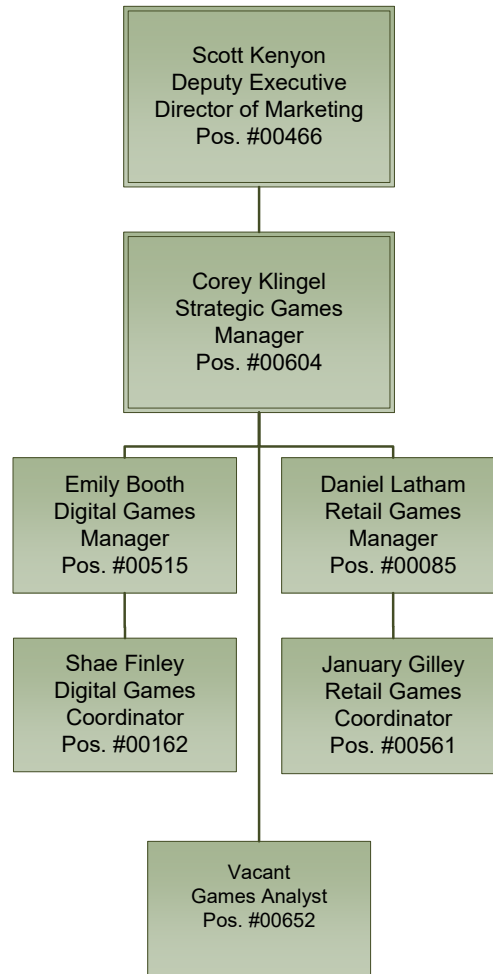


Marketing Department



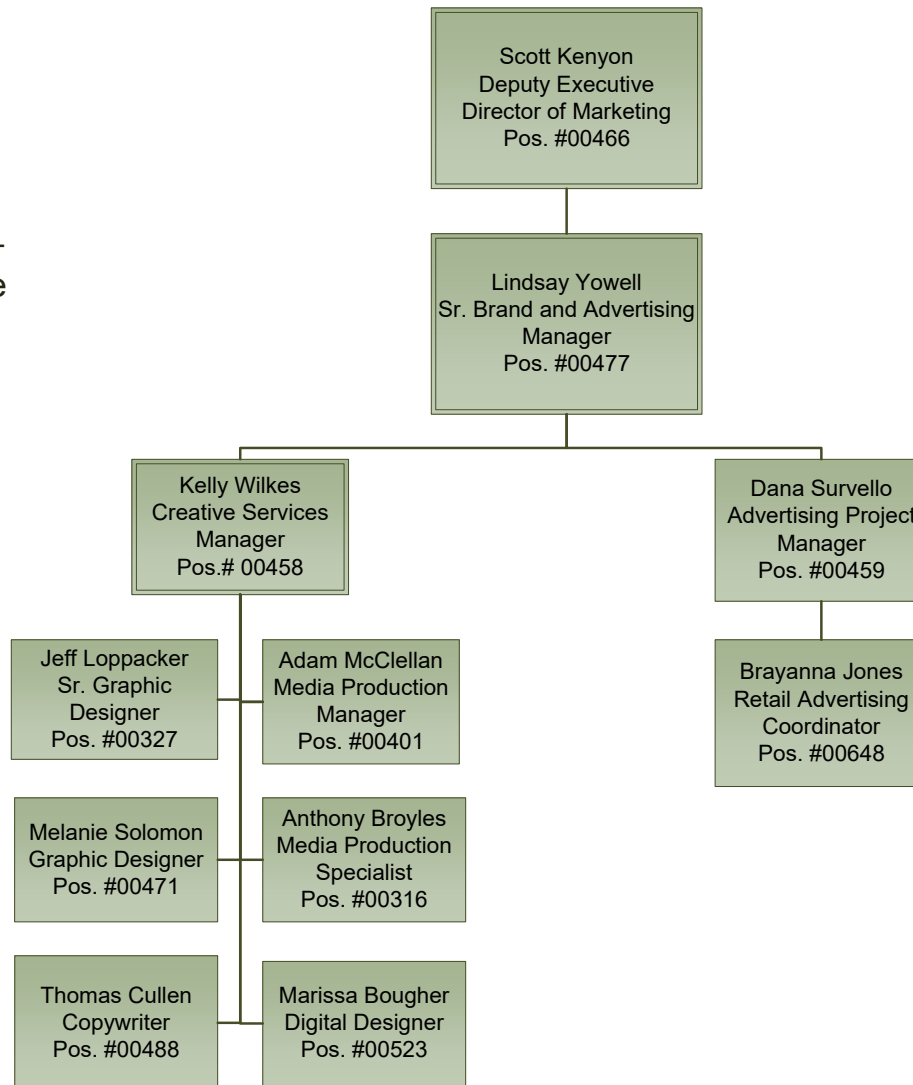


Marketing Department –
Product and Games



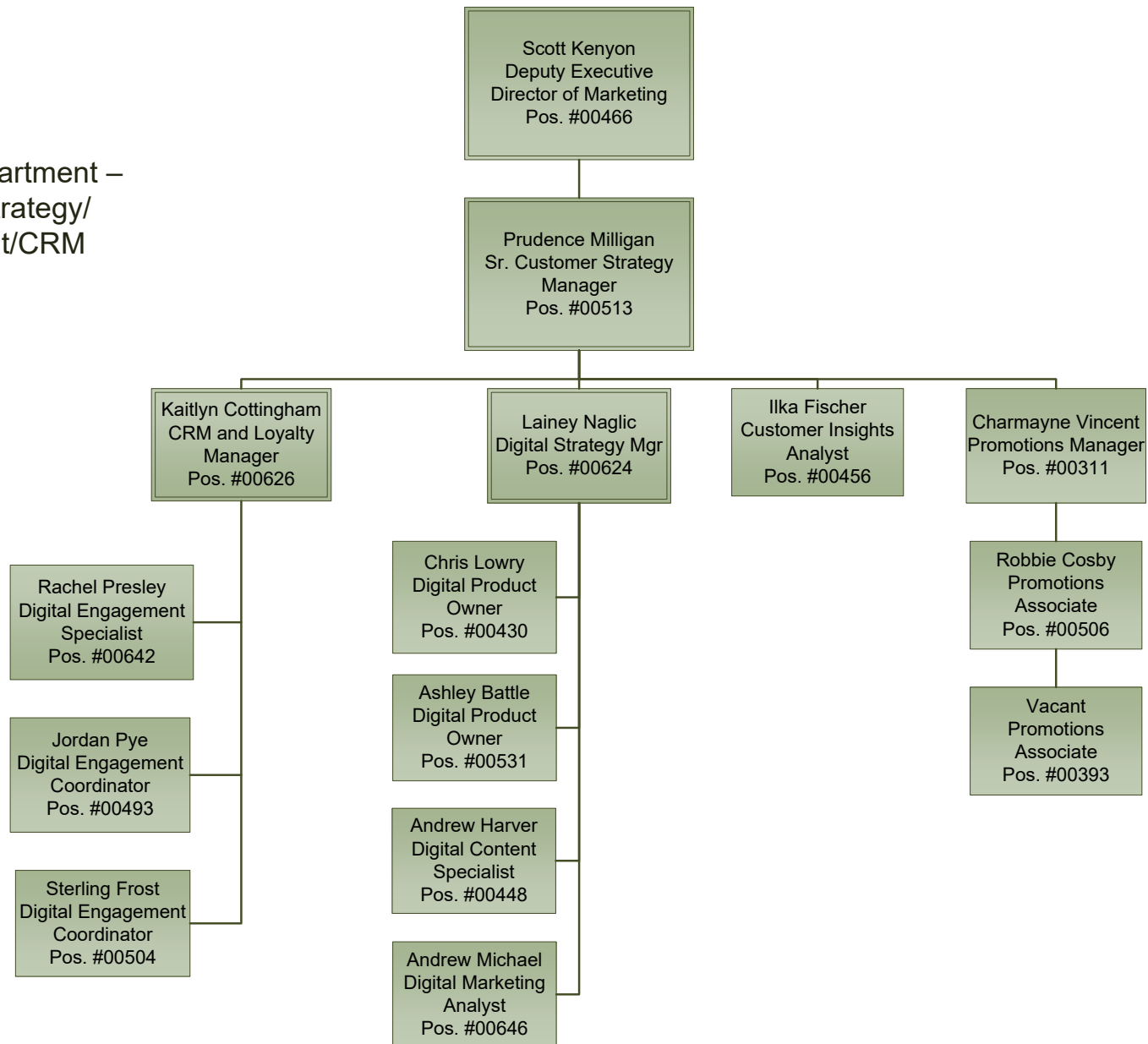


Marketing Department –
Advertising and Creative
Services



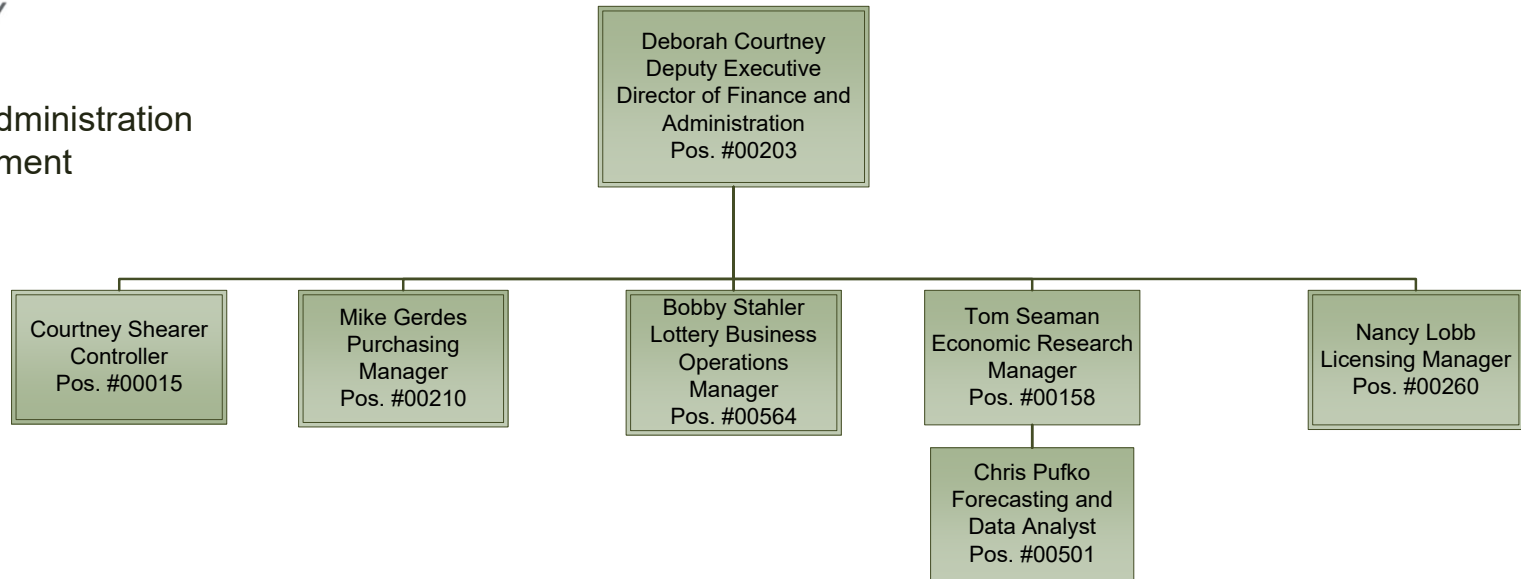


Marketing Department –
Customer Strategy/
Engagement/CRM





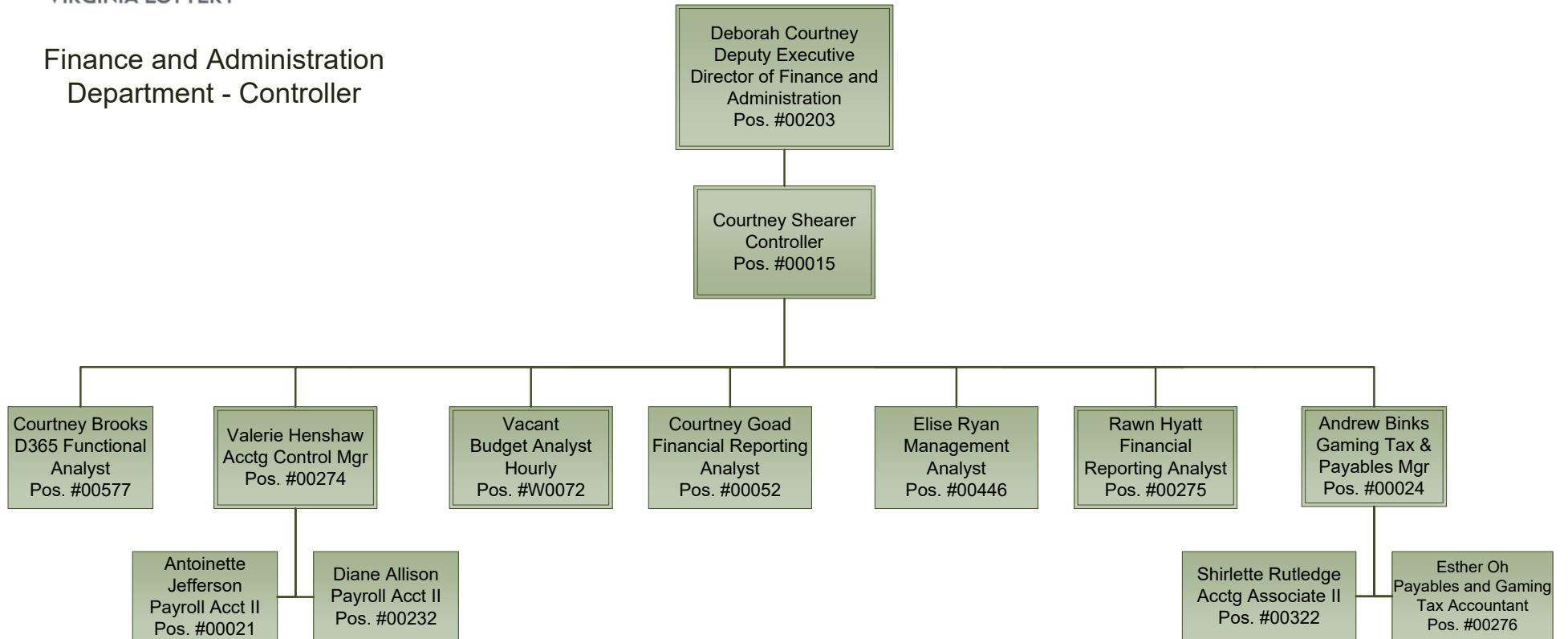
Finance and Administration Department





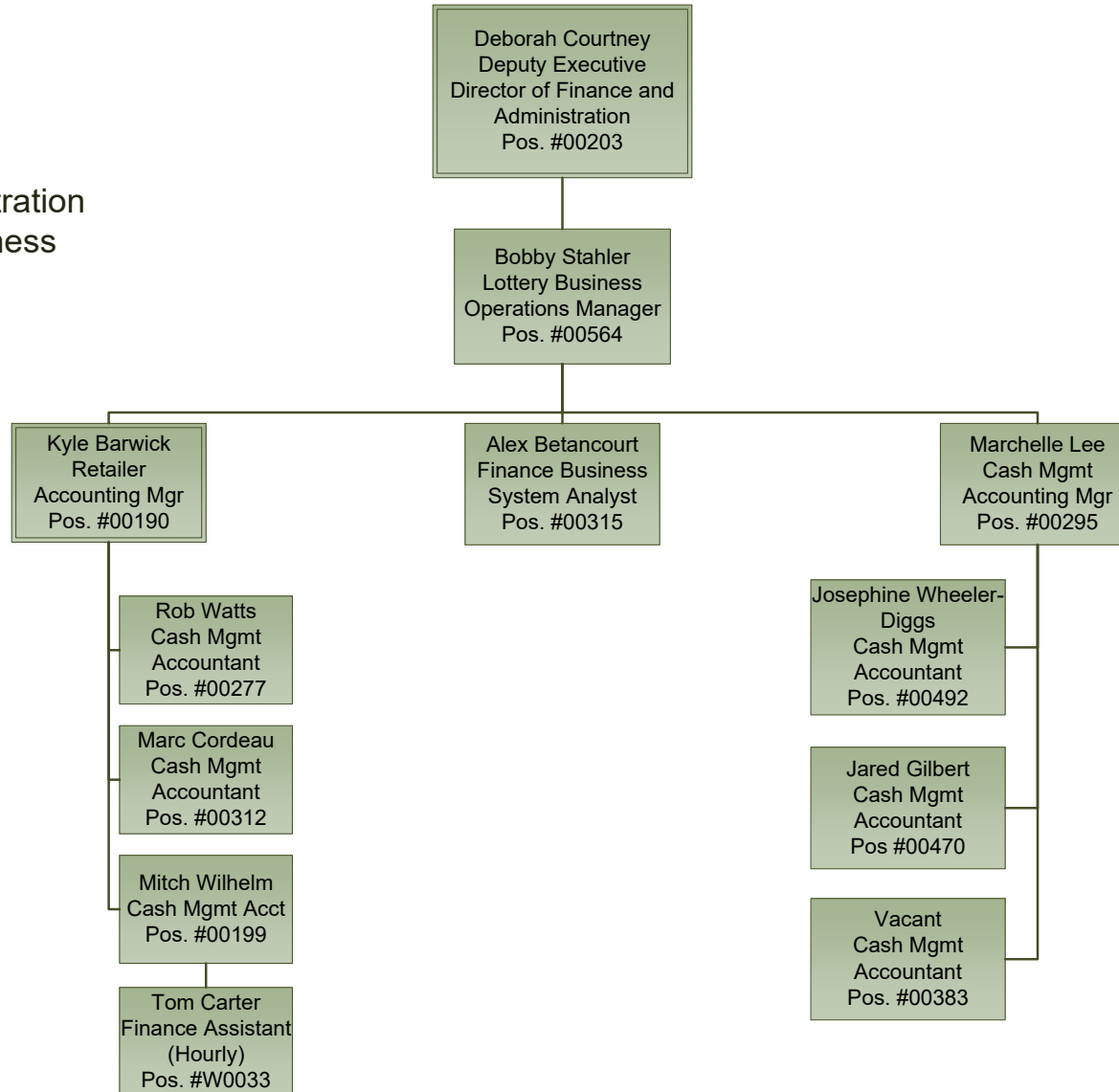
VIRGINIA LOTTERY

Finance and Administration
Department - Controller



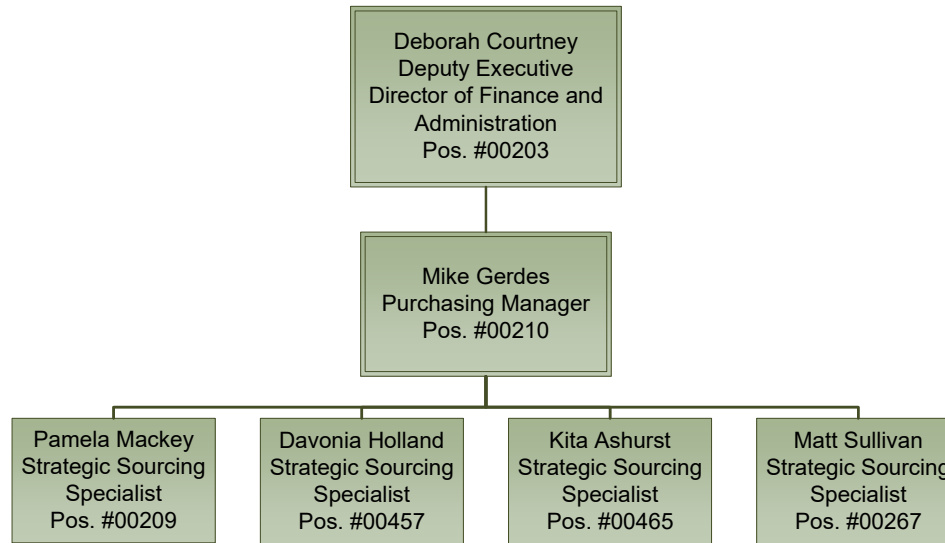


Finance and Administration
Department – Business
Operations



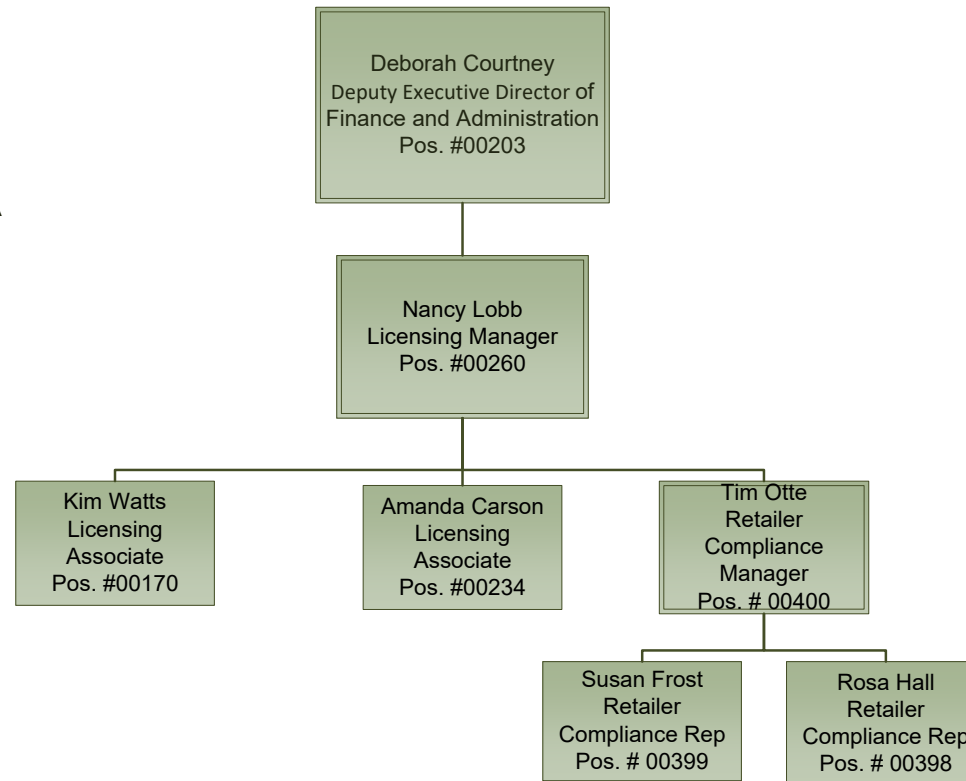


Finance and Administration
Department - Procurement



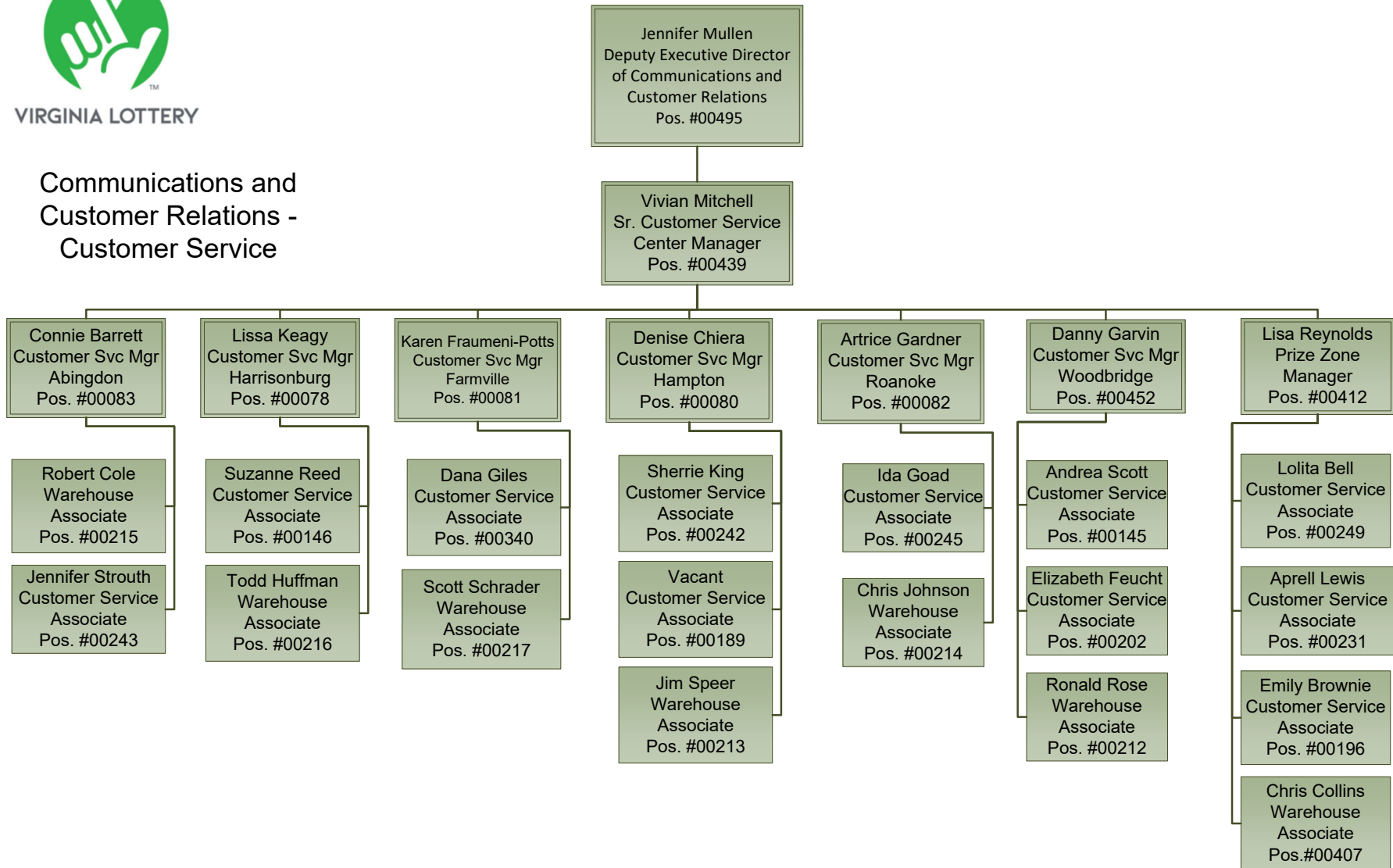


Finance and Administration
Department – Licensing/ADA



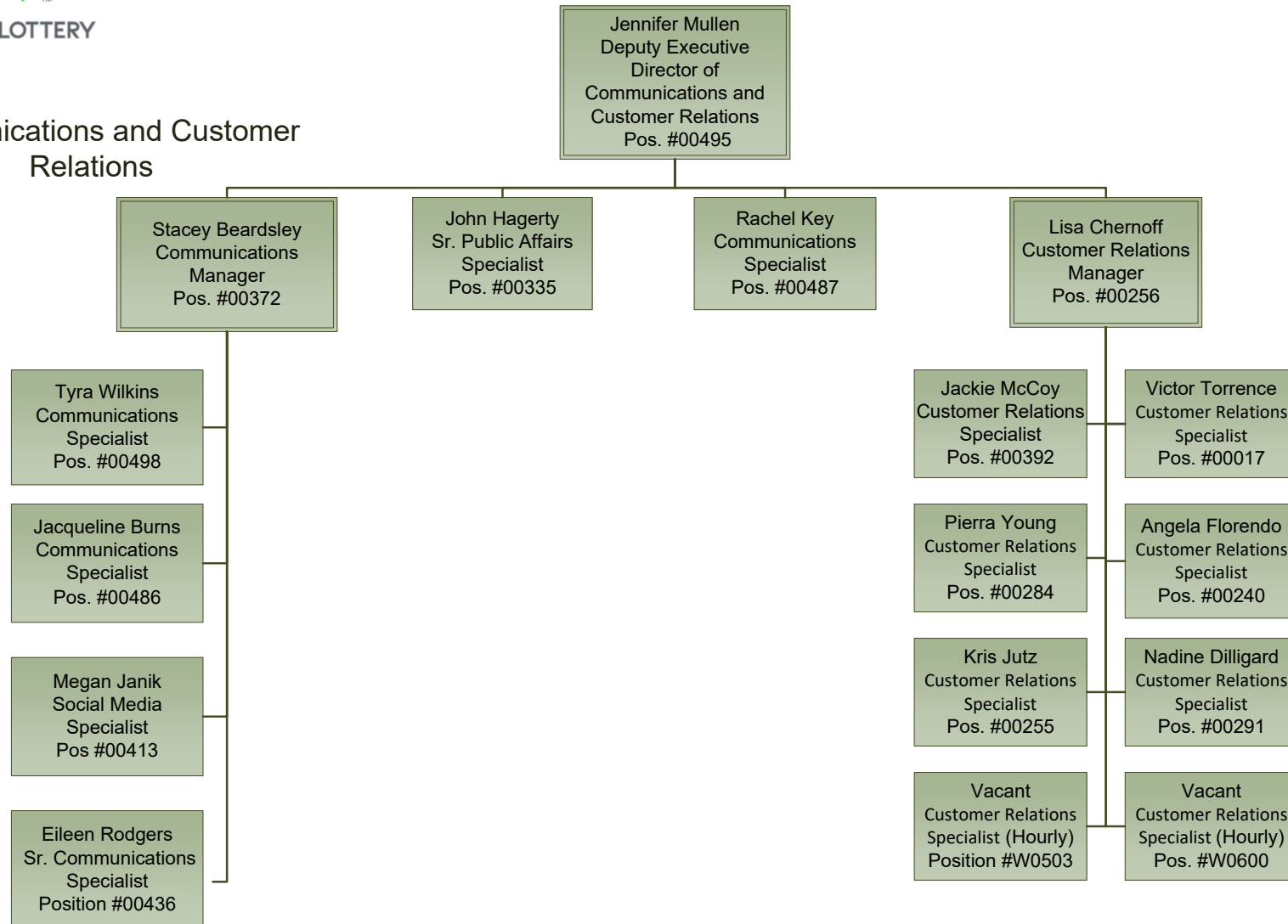


Communications and Customer Relations - Customer Service



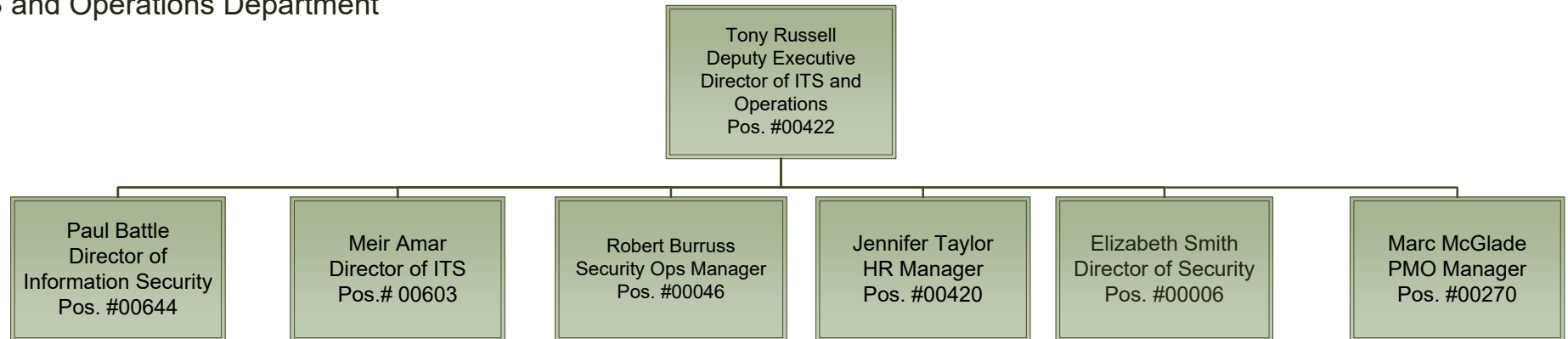


Communications and Customer Relations



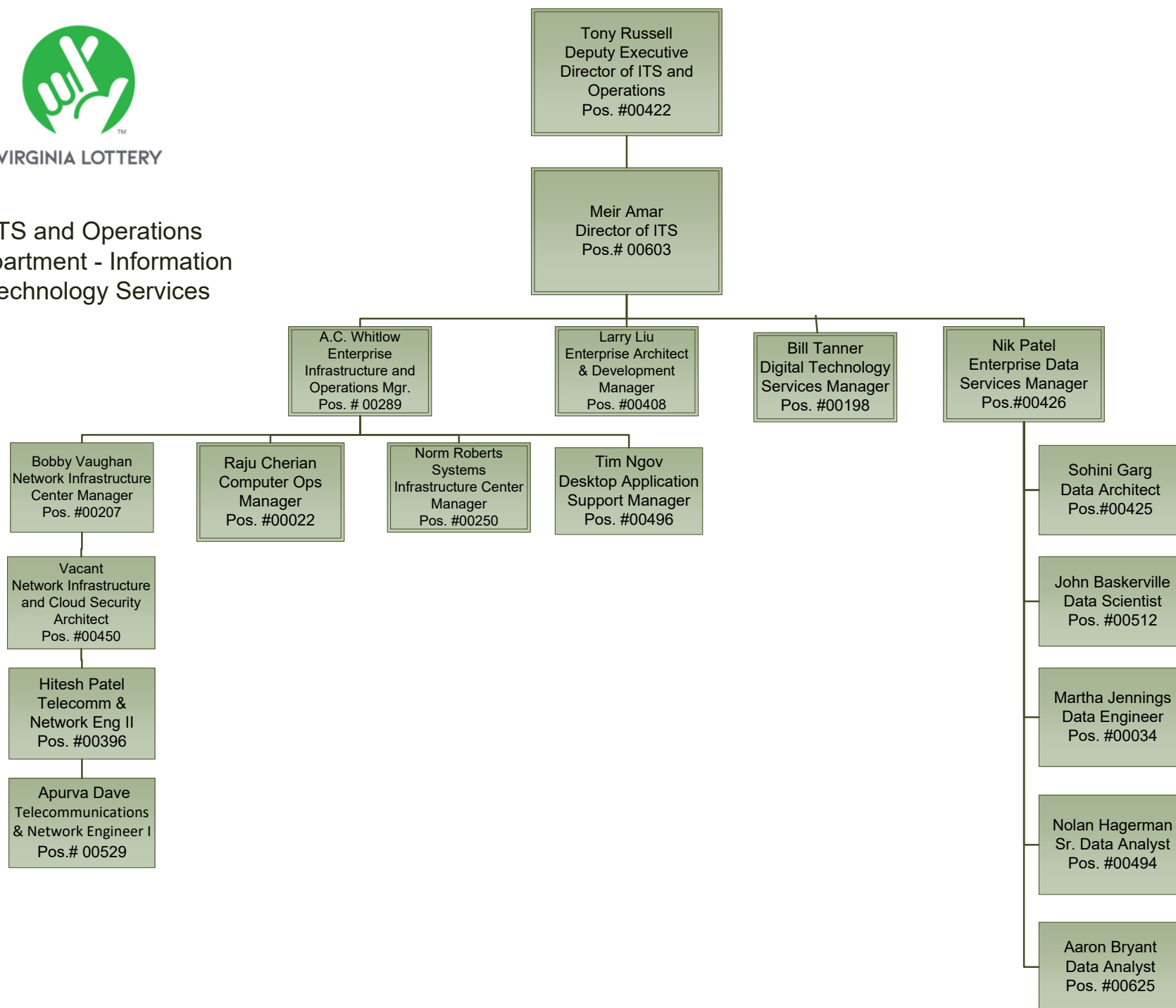


ITS and Operations Department





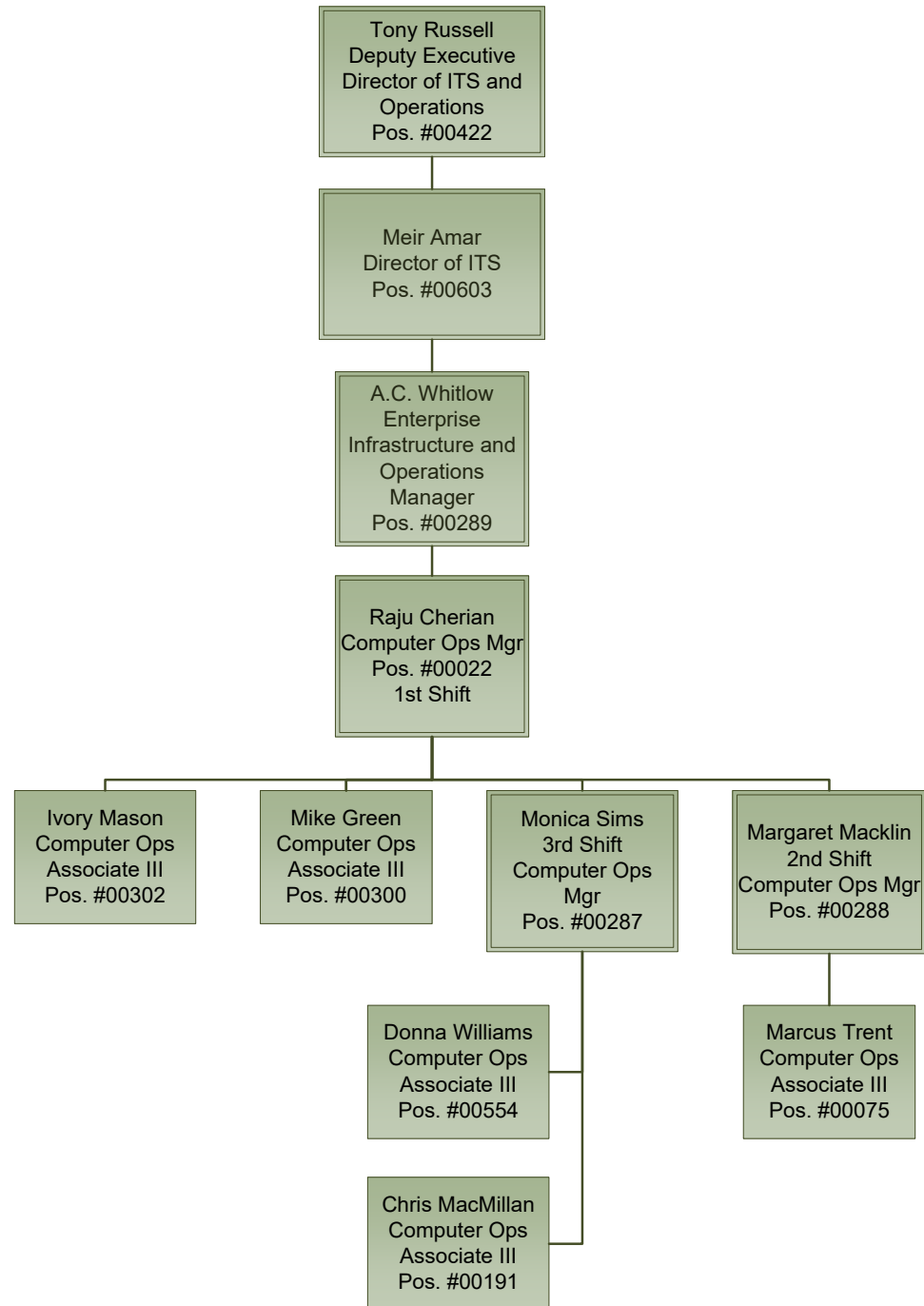
ITS and Operations
Department - Information
Technology Services





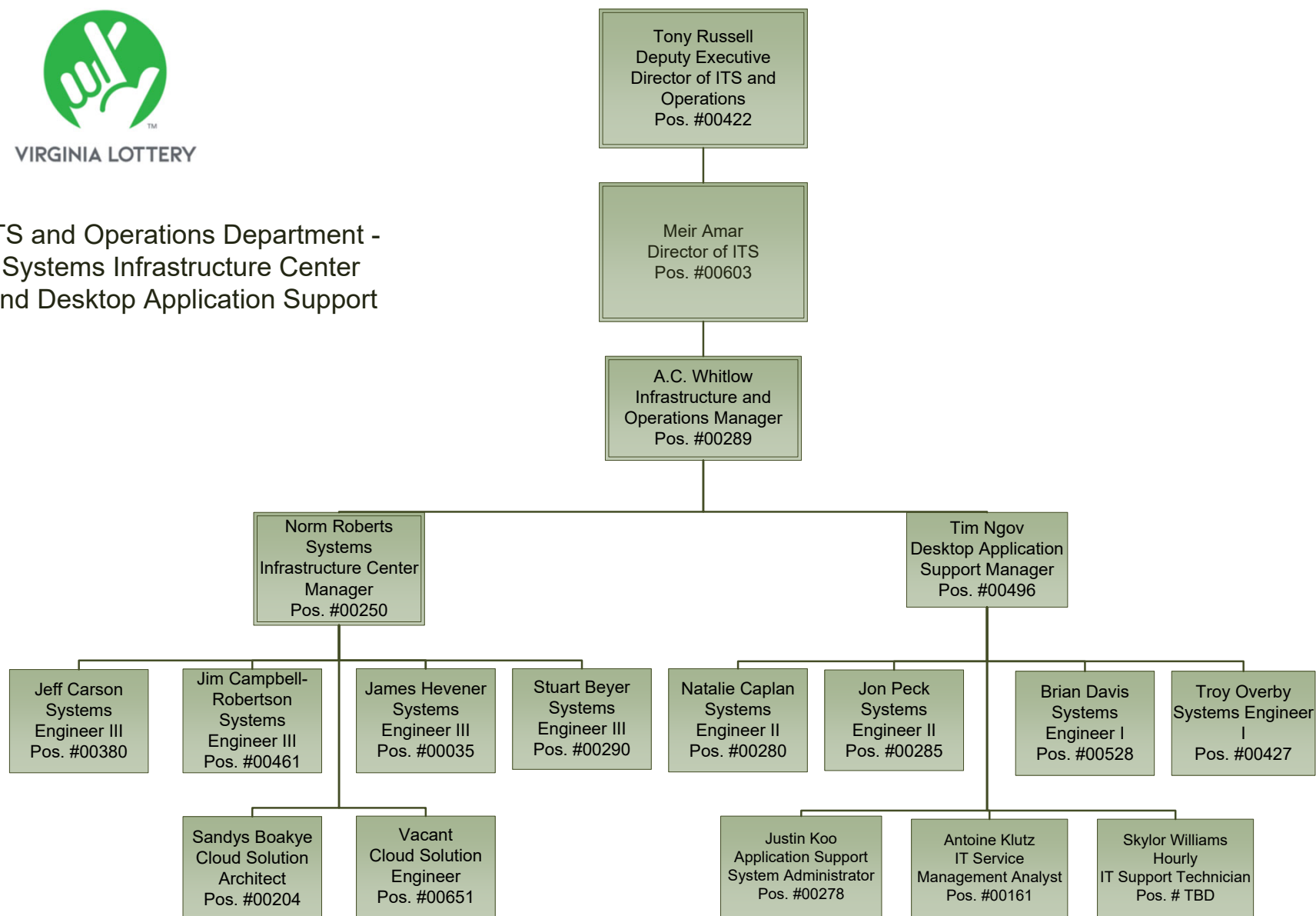
VIRGINIA LOTTERY

ITS and Operations -
Department
Infrastructure & Operations



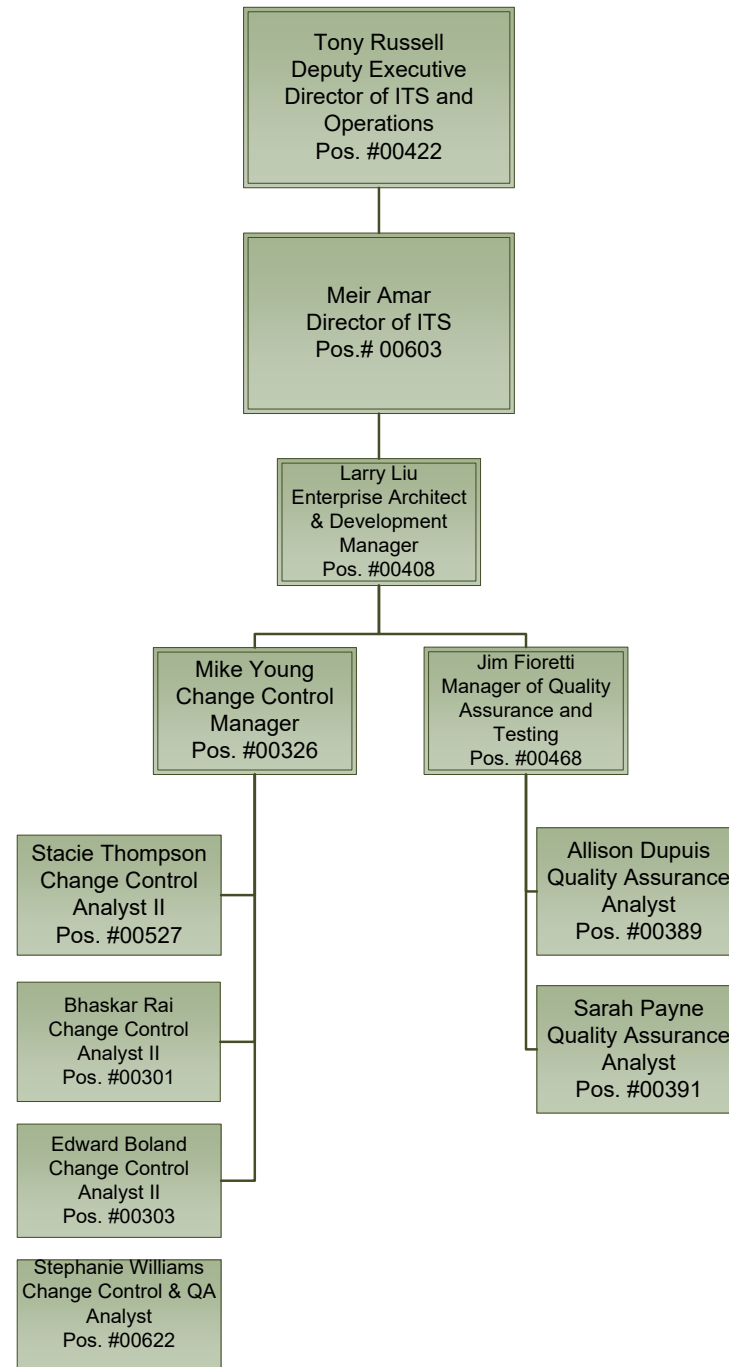


ITS and Operations Department - Systems Infrastructure Center and Desktop Application Support



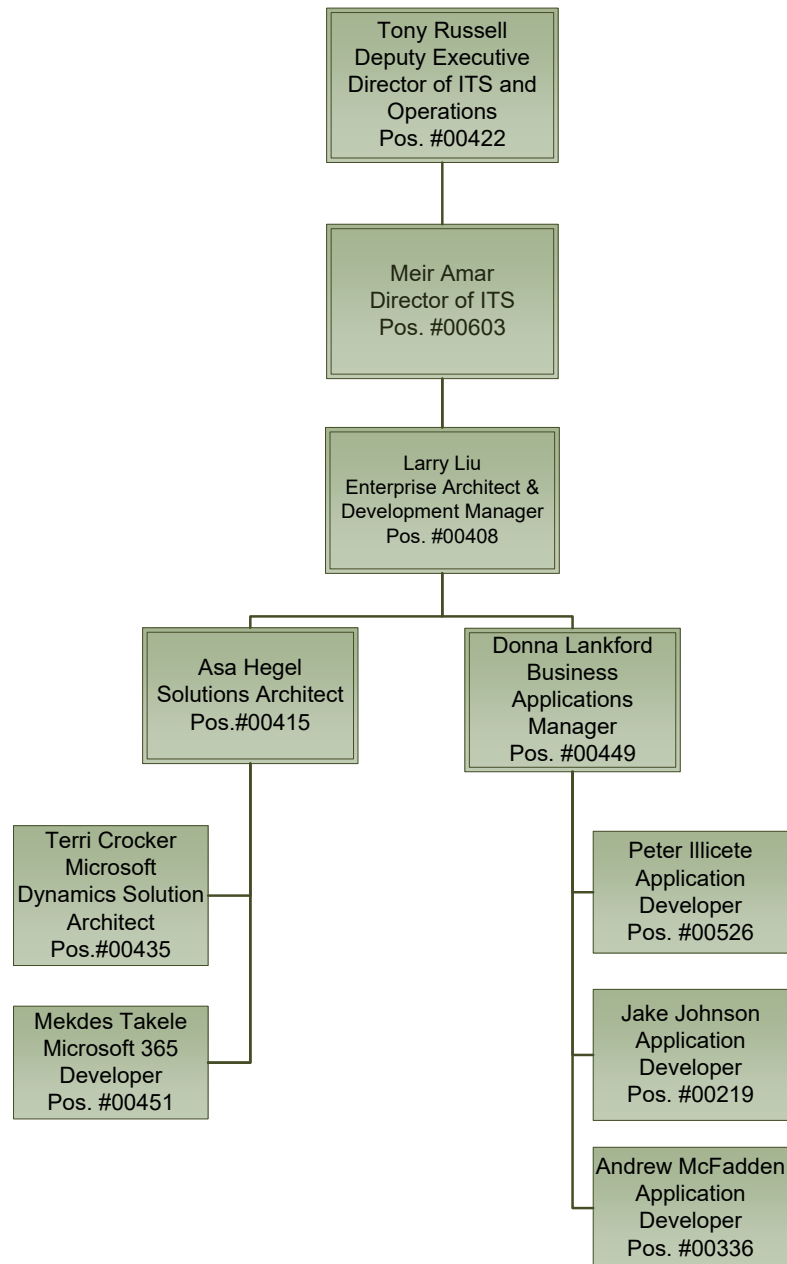


ITS and Operations
Department – Change
Management



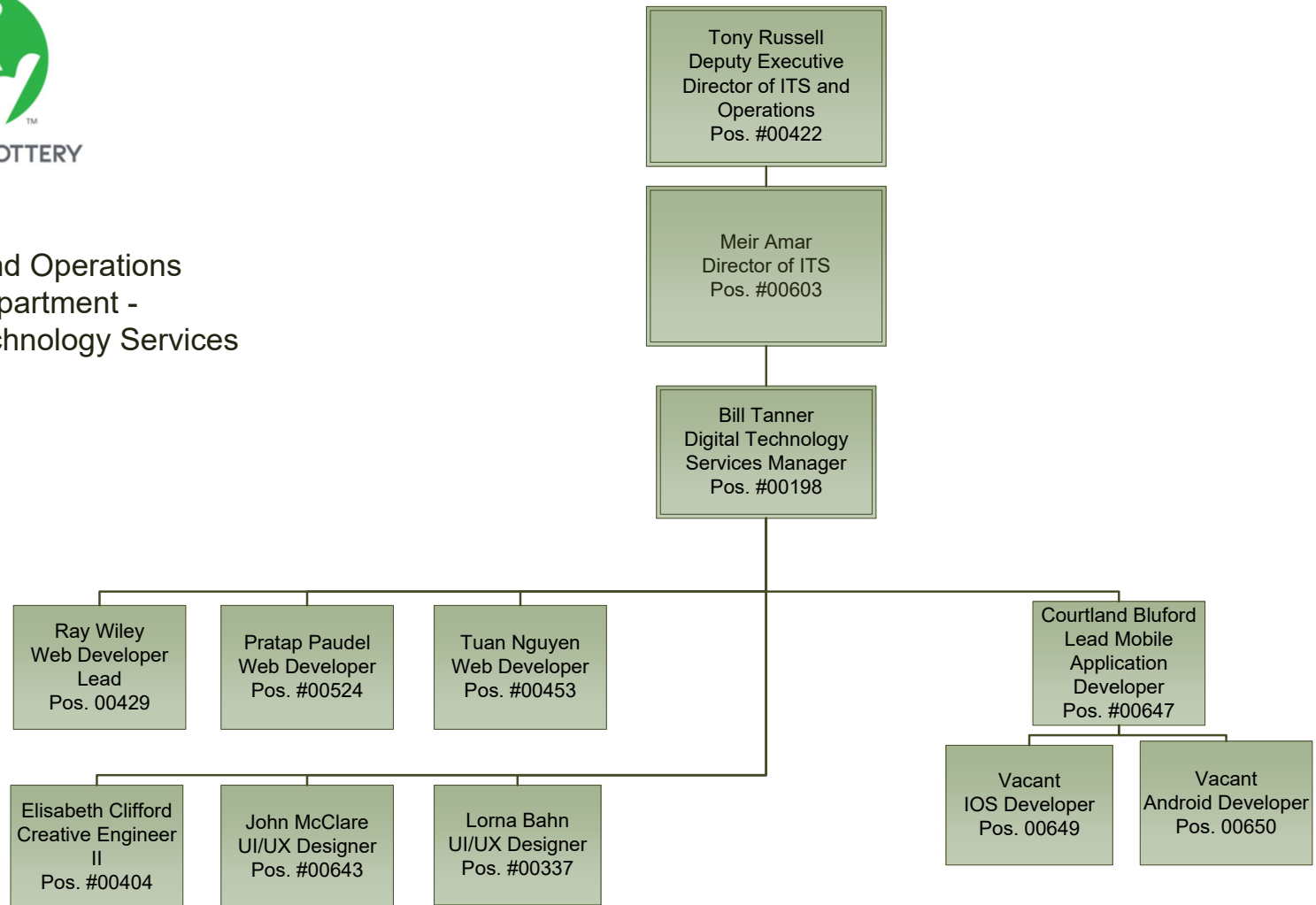


ITS and Operations
Department -
Architecture and Development



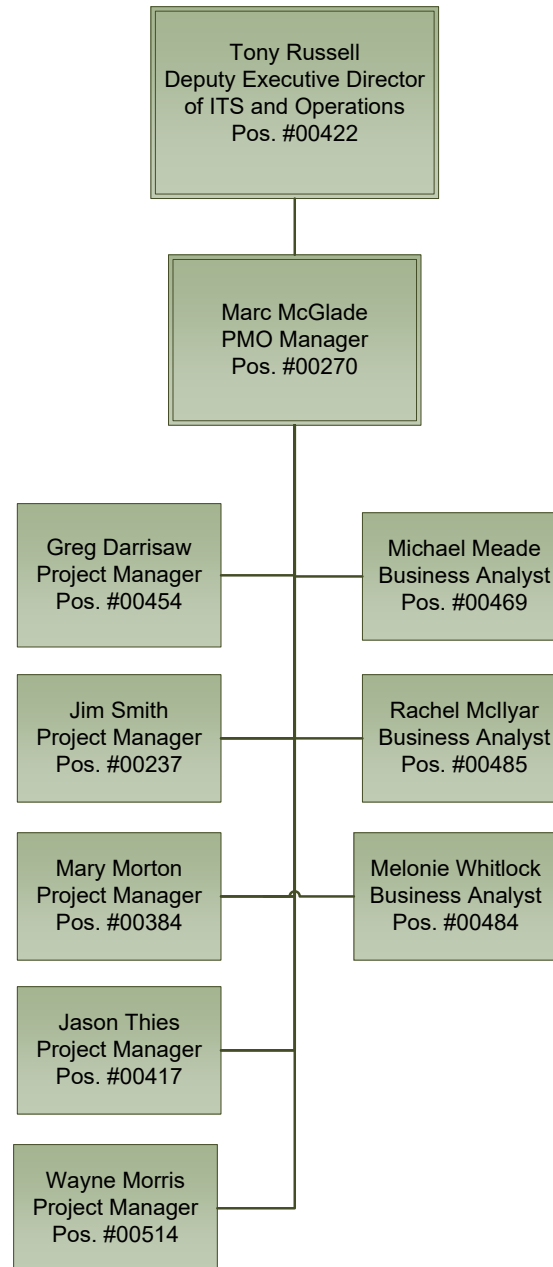


ITS and Operations
Department -
Digital Technology Services



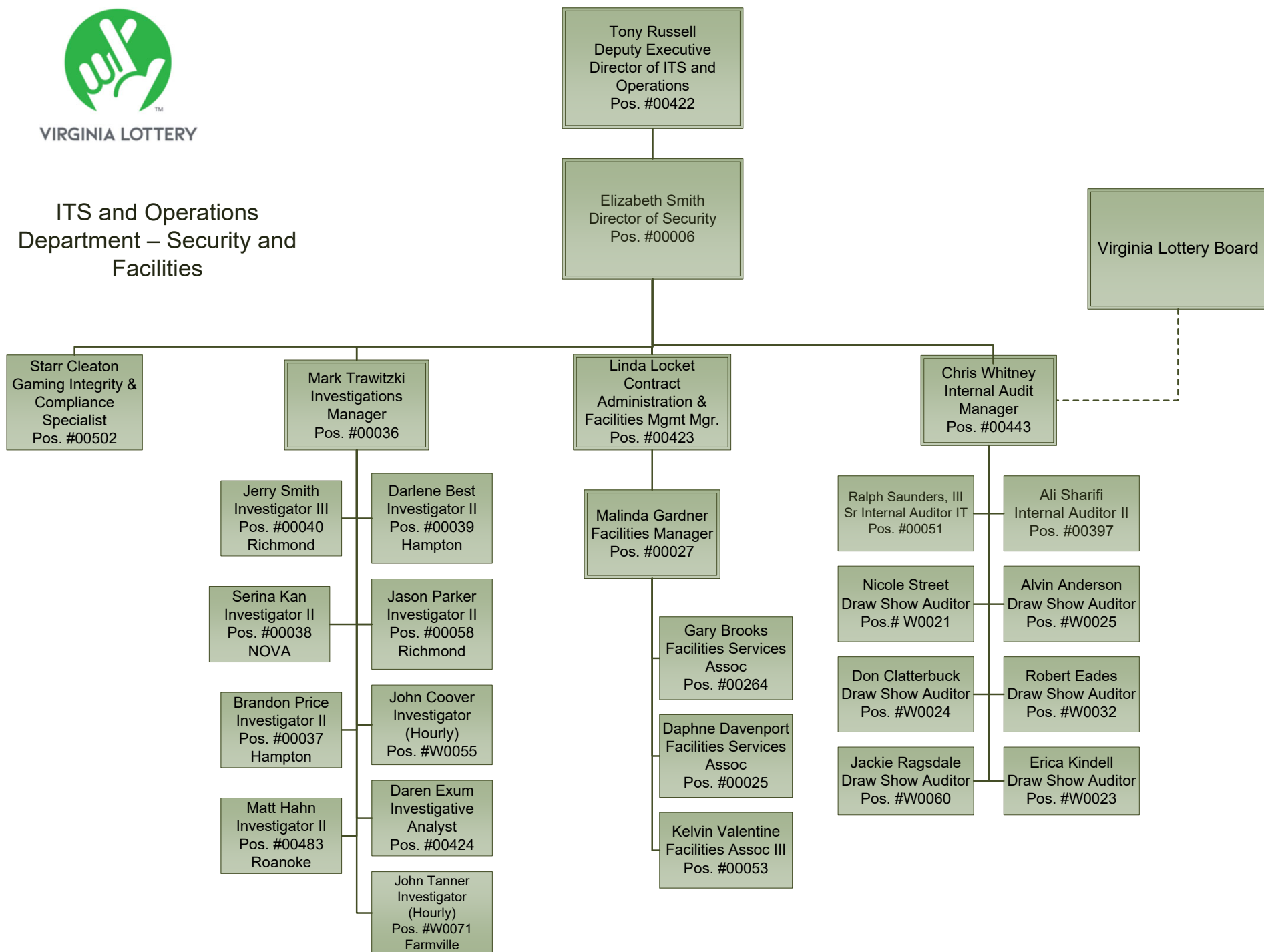


ITS and Operations Department - PMO



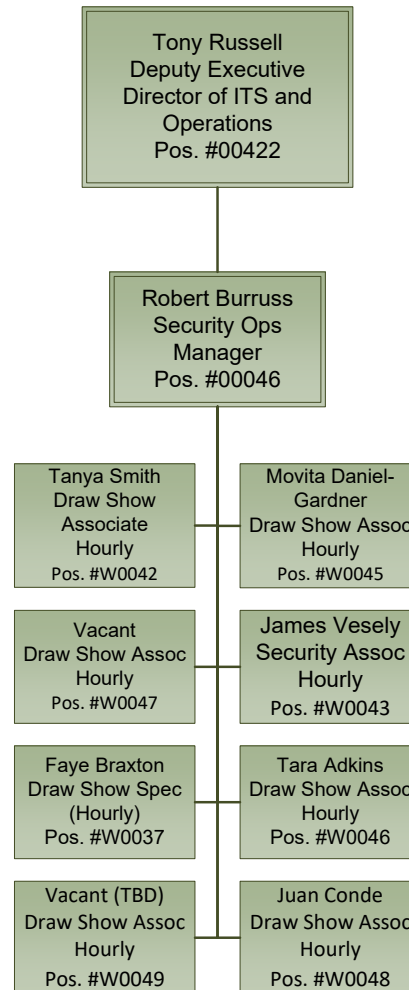


ITS and Operations Department – Security and Facilities



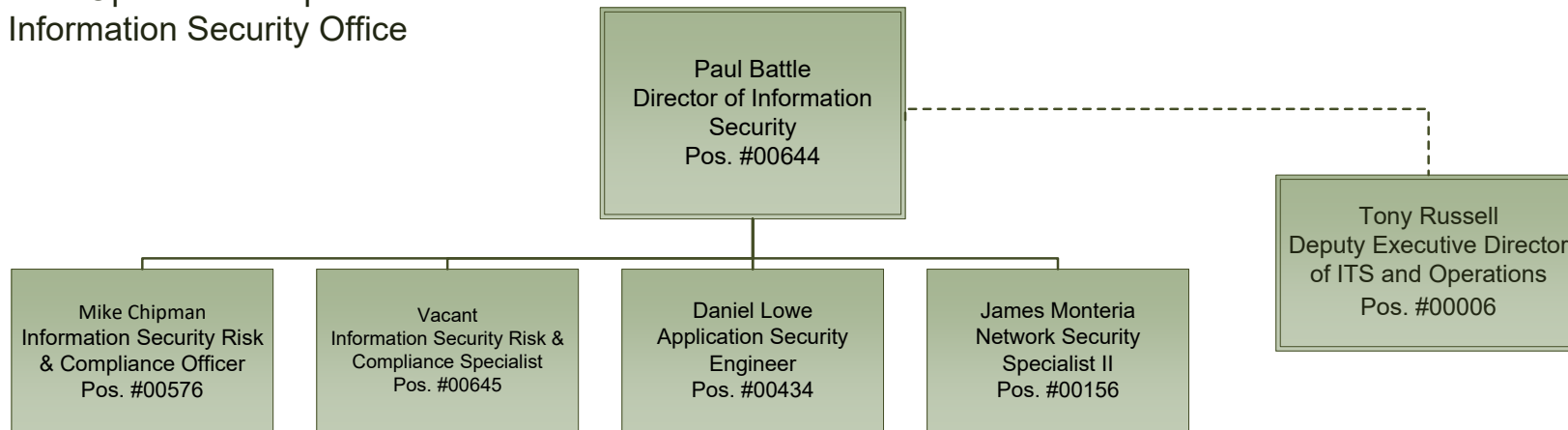


ITS and Operations
Department – Draw Show



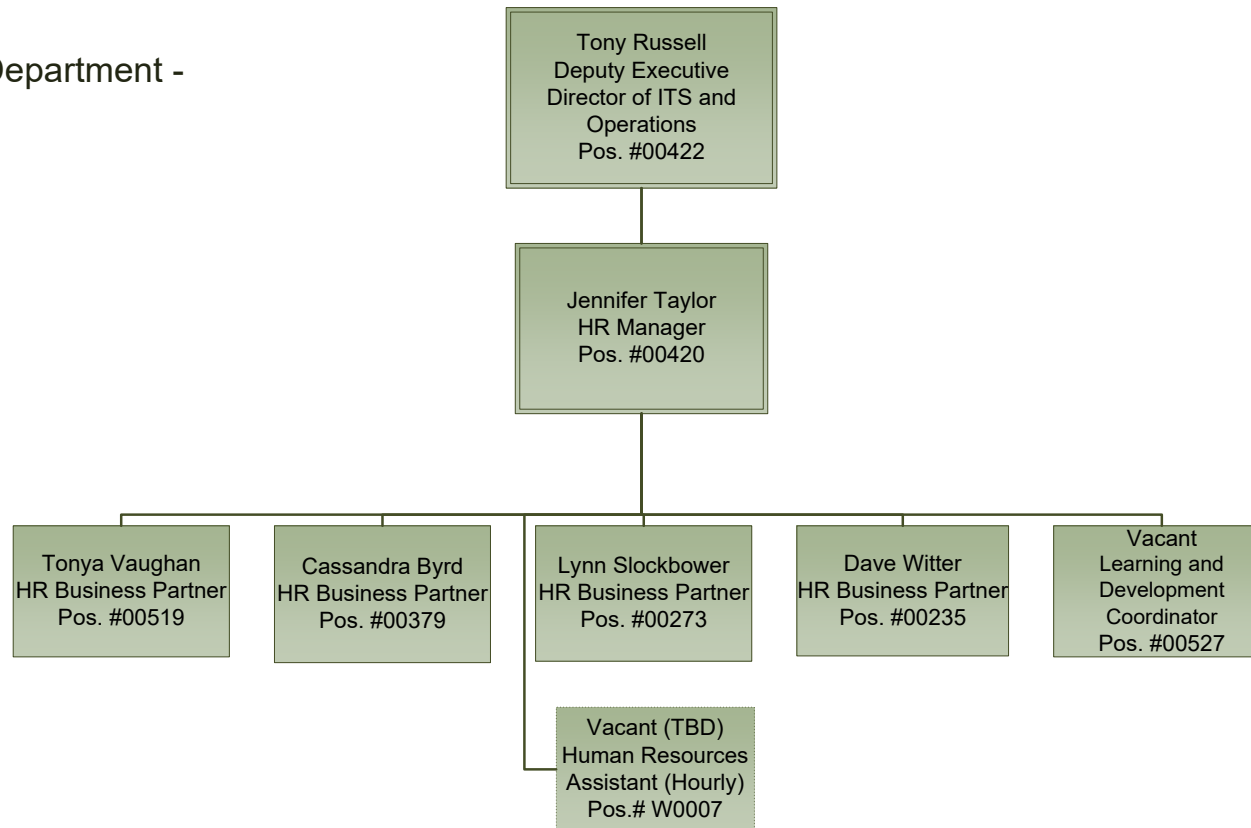


ITS and Operations Department - Information Security Office



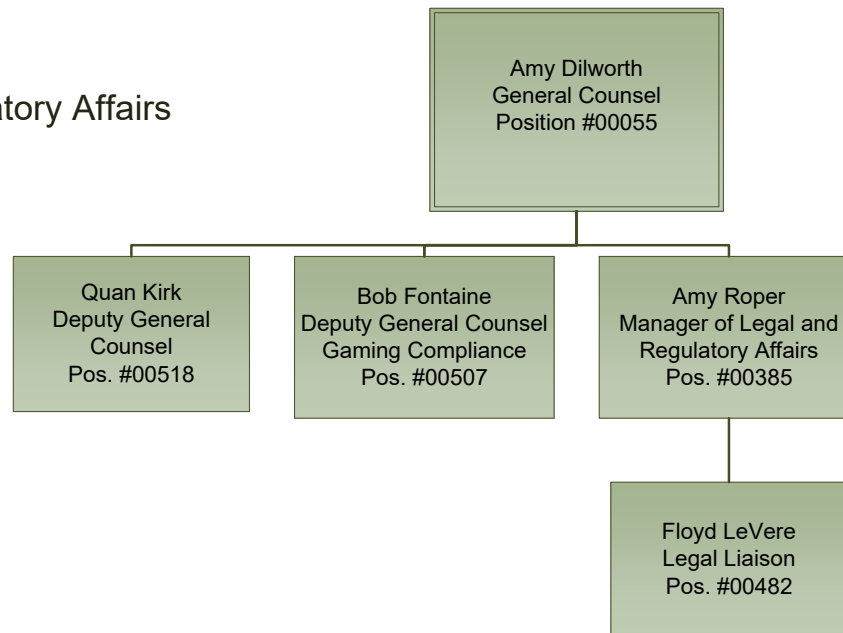


ITS and Operations Department - HR



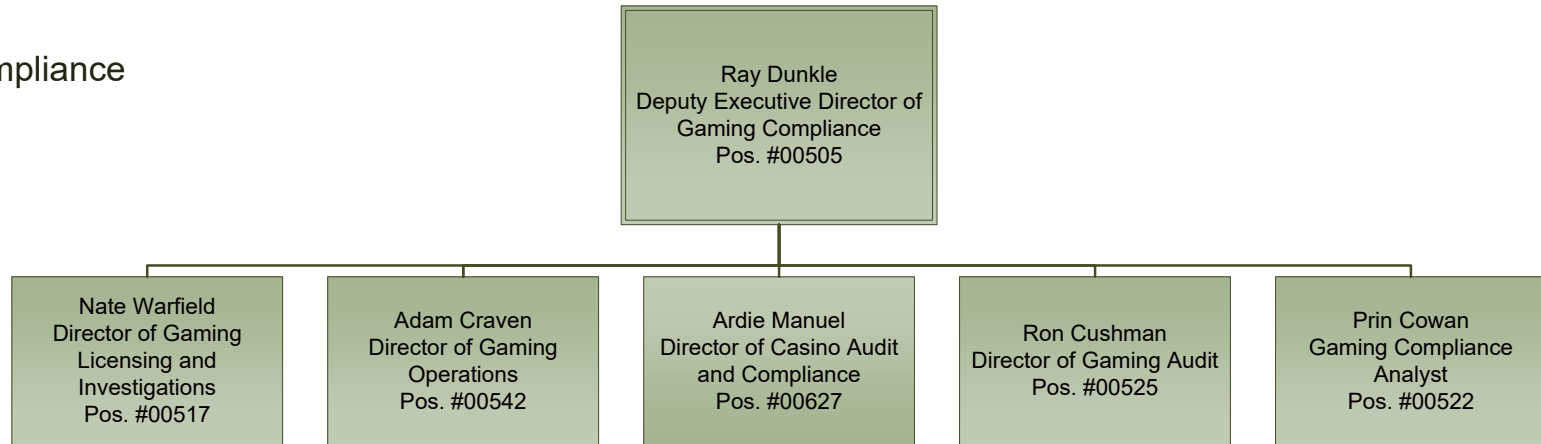


Office of Legal and Regulatory Affairs



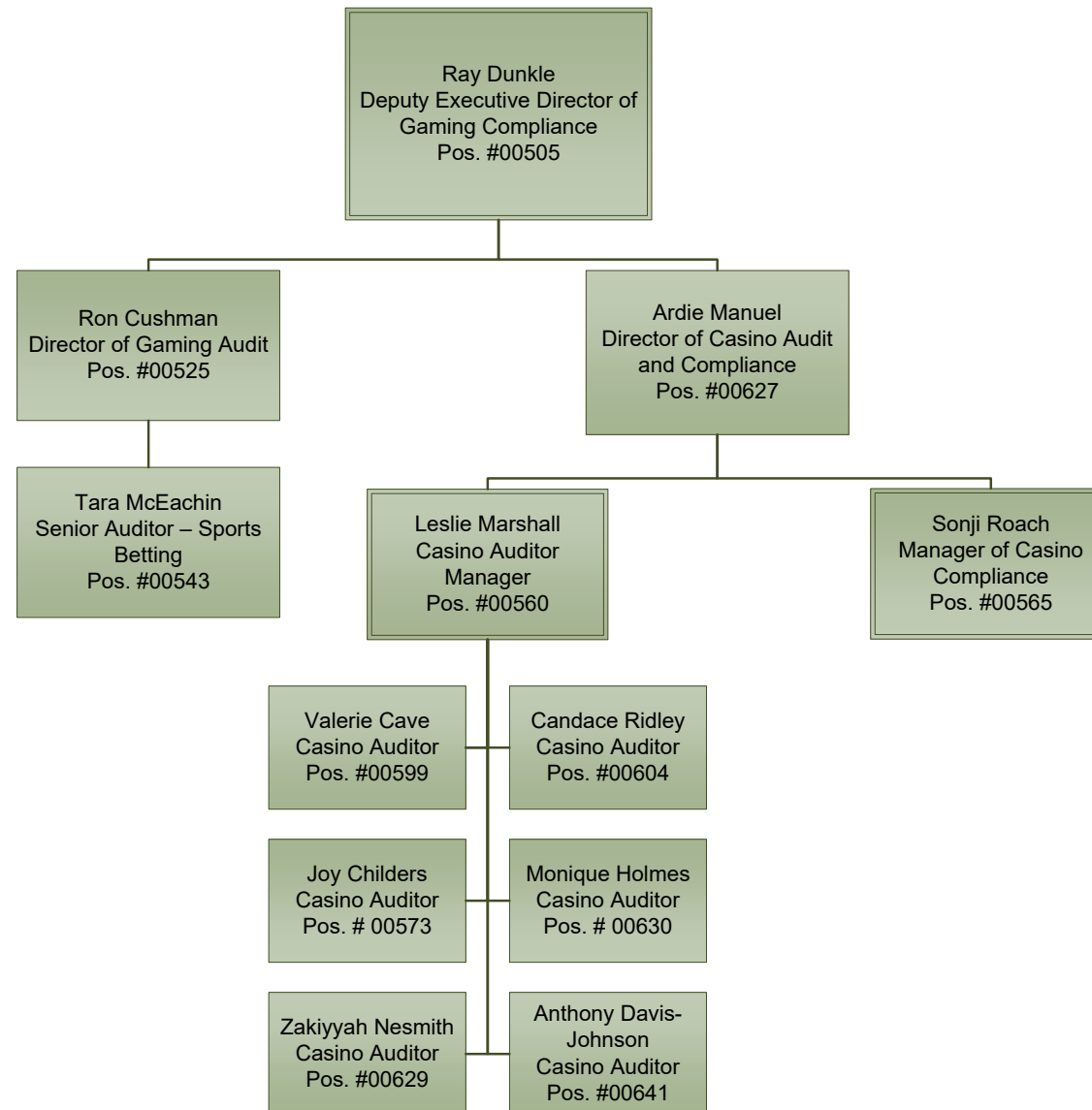


Gaming Compliance



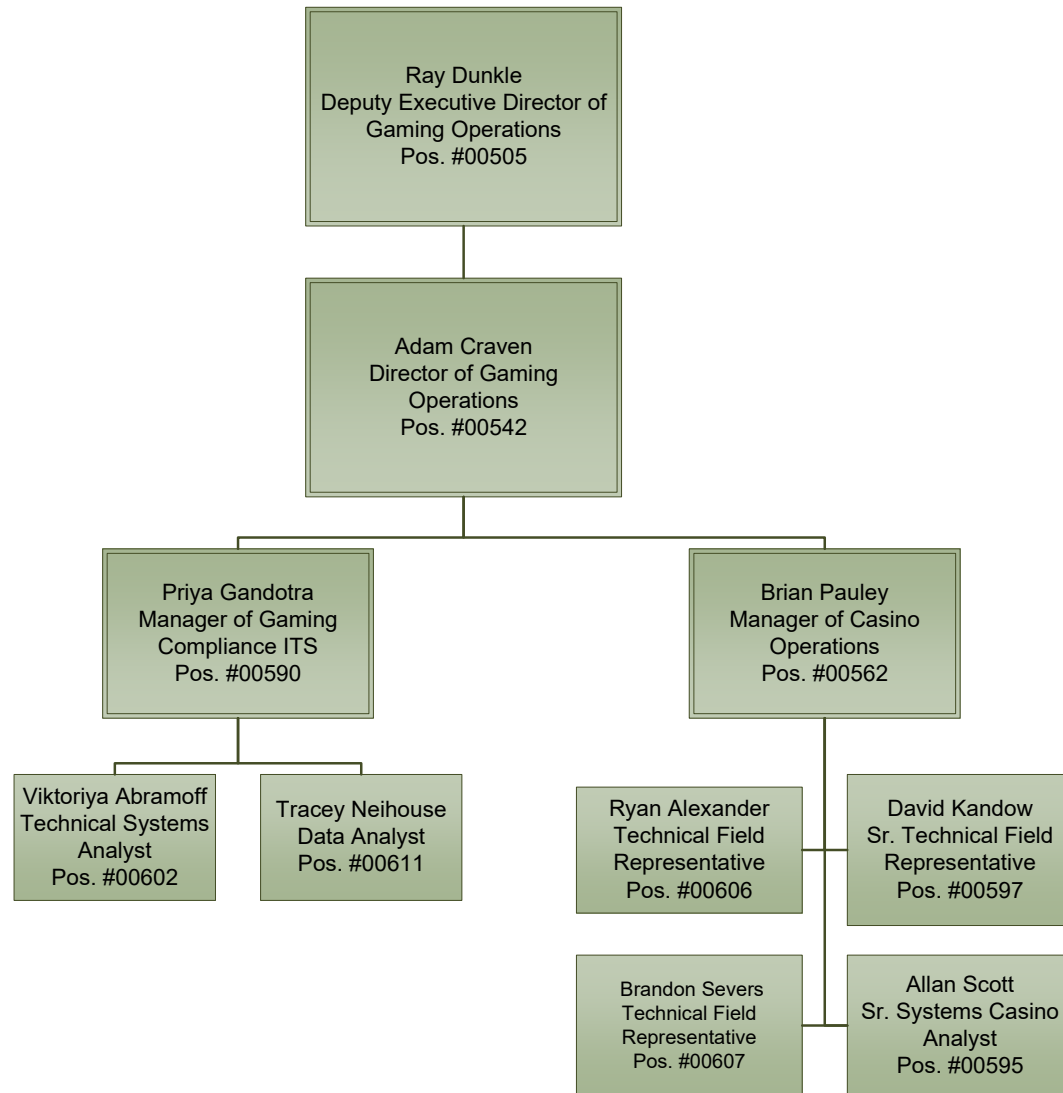


Gaming Compliance - Audit



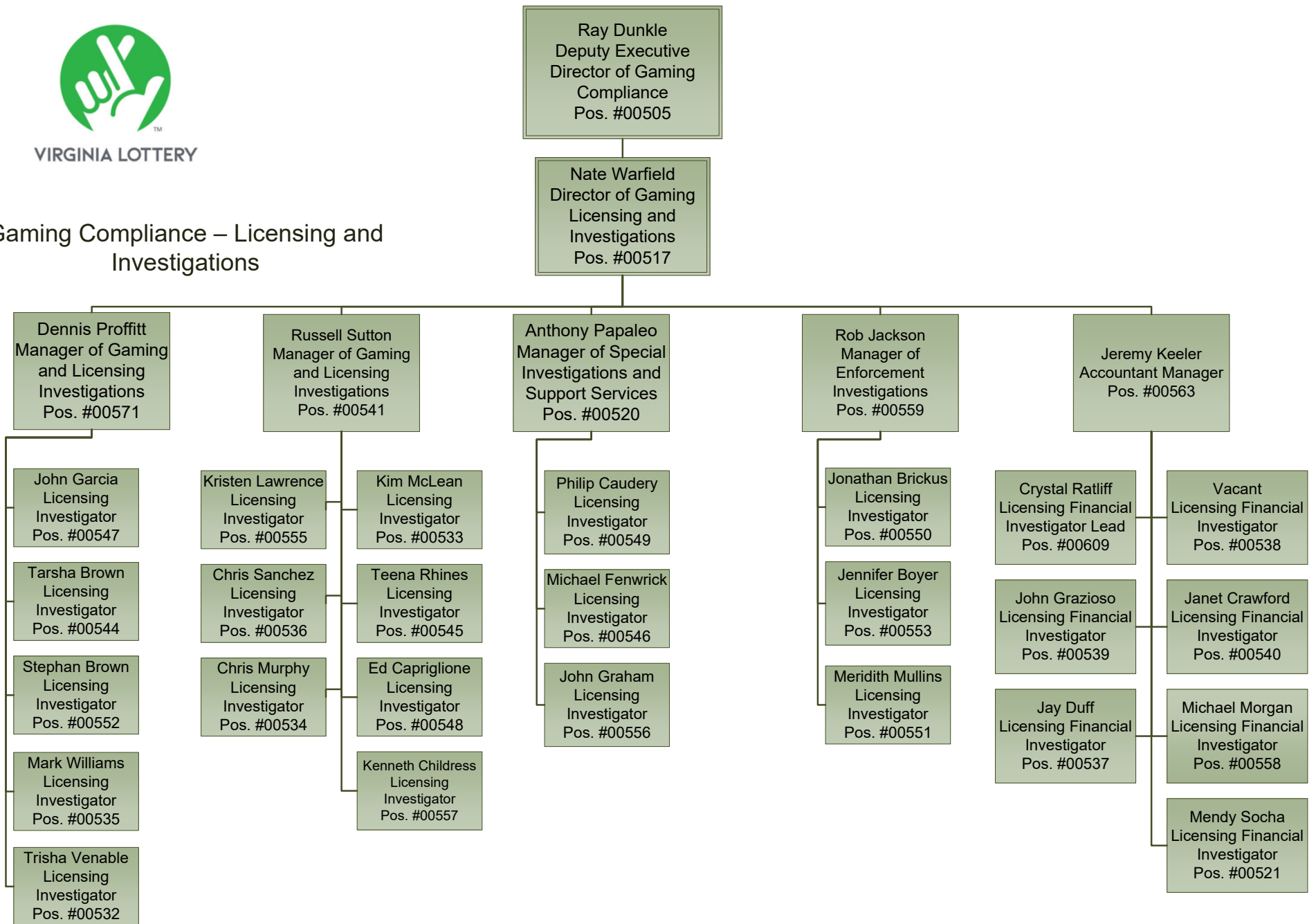


Gaming Operations



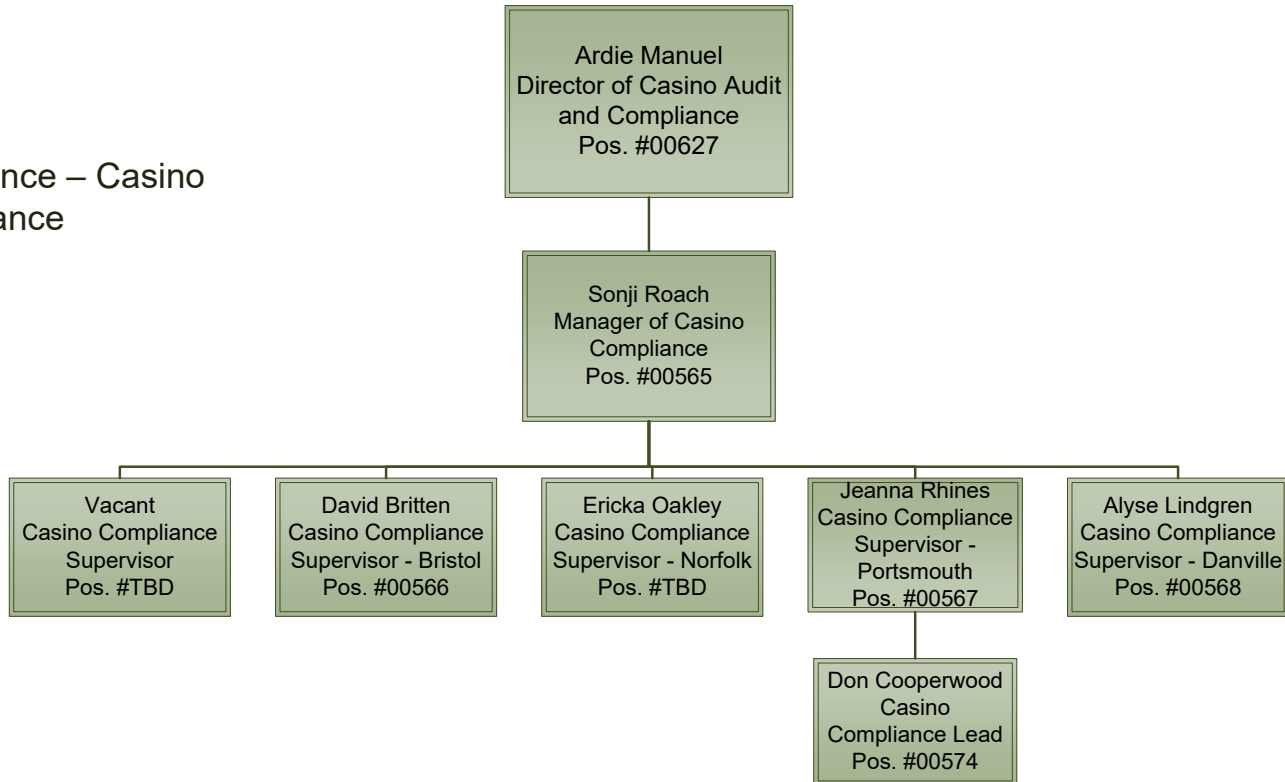


Gaming Compliance – Licensing and Investigations



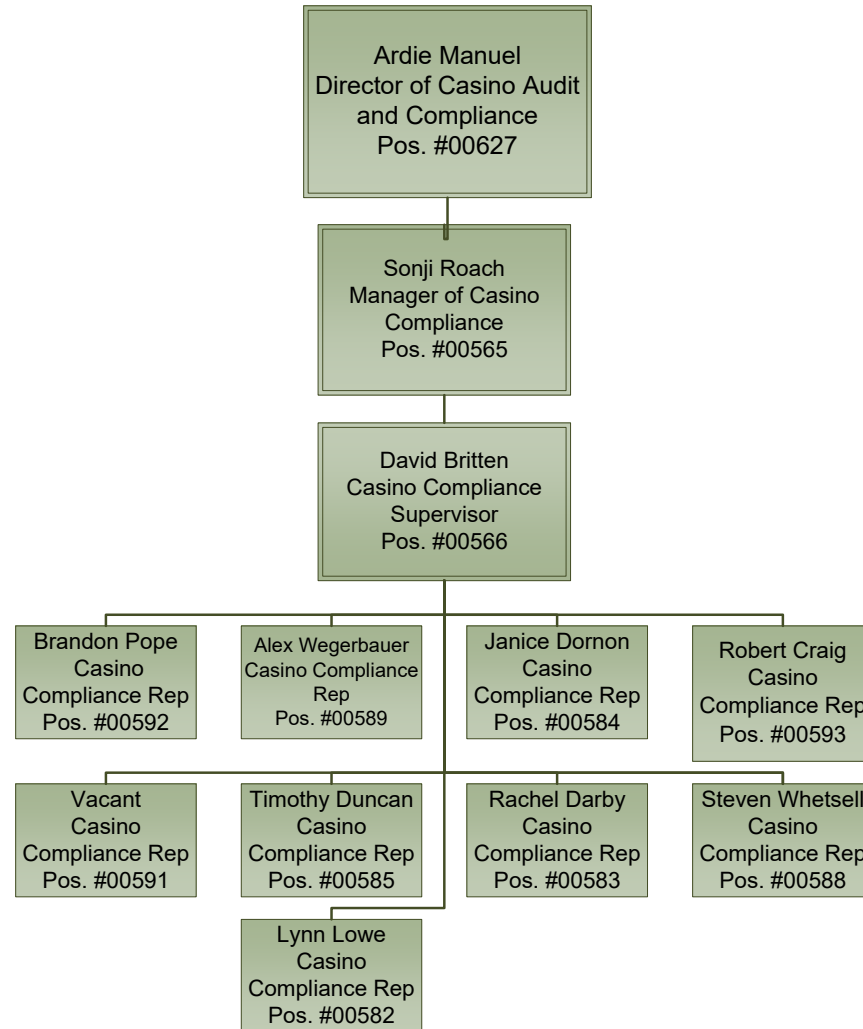


Gaming Compliance – Casino Compliance



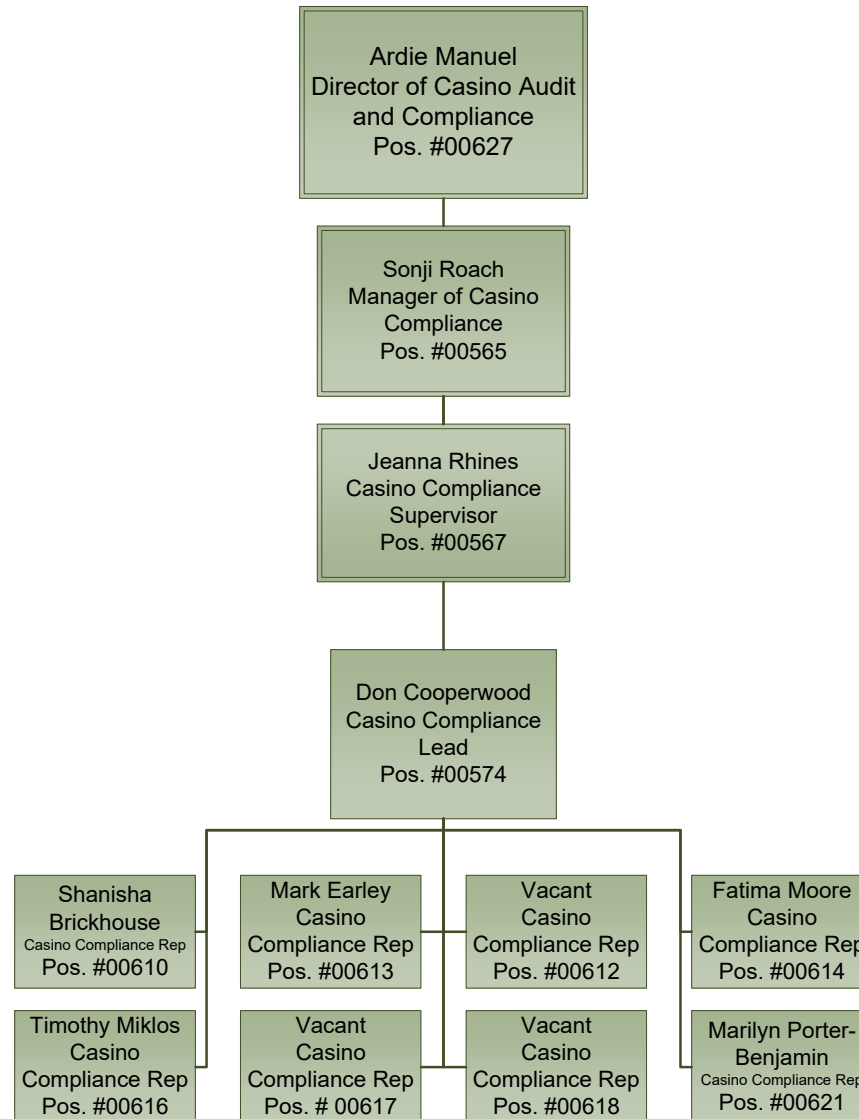


Gaming Compliance – Casino
Compliance
Bristol Hard Rock Casino



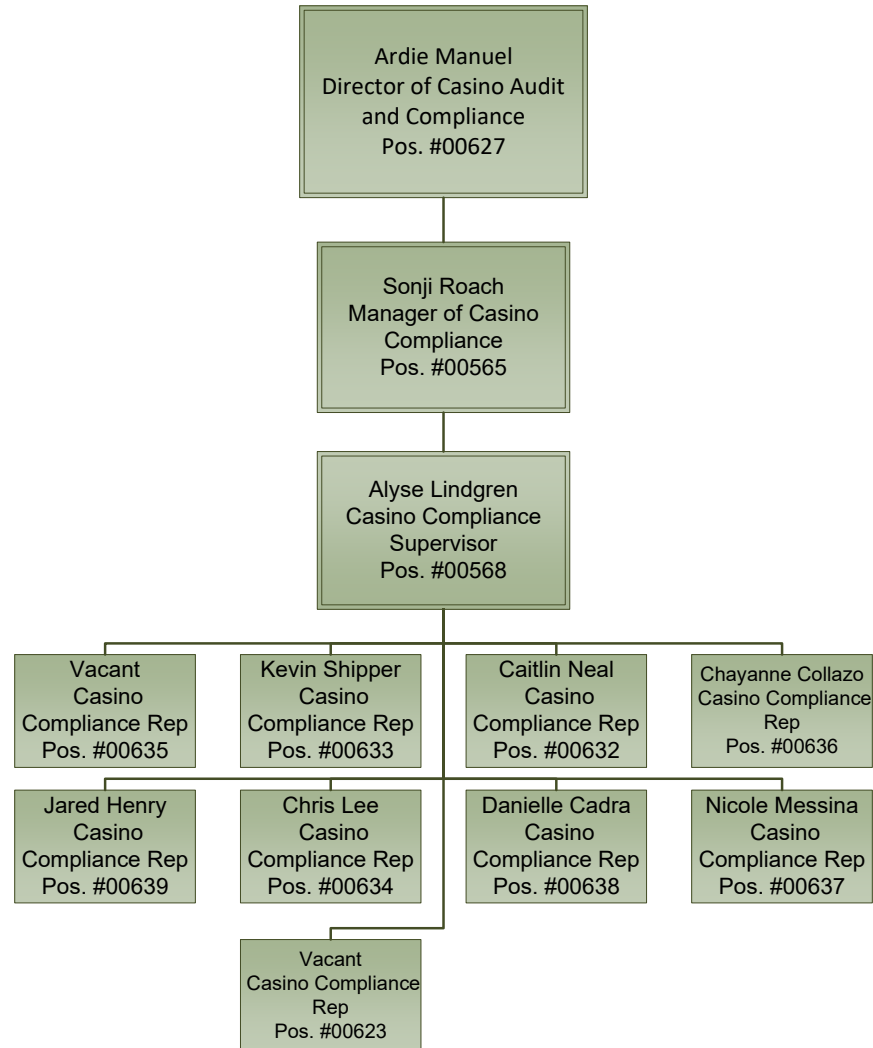


Gaming Compliance – Casino
Compliance
Portsmouth Rivers Casino





Gaming Compliance – Casino
Compliance
Danville Caesars Casino





Gaming Compliance – Casino
Compliance
Norfolk Casino

